



WILLIAM  
CAREY  
UNIVERSITY

INFORMATION TECHNOLOGY DEPARTMENT

## Guest Wireless Guide

Version 1.0 – June 21, 2013

© 2013 William Carey University

498 Tuscan Avenue, Box 147

Hattiesburg, MS 39401

Phone 601.318.6203 · Fax 601.318.6546

---

## Guest Accounts

William Carey University is able to provide a guest account for special events hosted on our campuses. **Please note that advanced preparation must take place in order to receive credentials for guest wireless access. As a faculty or staff member at William Carey University, please email [help@wmcarey.edu](mailto:help@wmcarey.edu) with a request for guest wireless access for your event at least one week prior to your event. This will allow ample time to IT staff to prepare for your event.** Your request should describe the event being hosted, the campus locations for the event, and the dates for which wireless access will be needed.

### CareyAir Wireless Configuration (Chapter 2)

CareyAir Wireless is a secure university-wide wireless network accessible to students, faculty, staff, and guests at WCU. This wireless network provides internet and local network access to staff and faculty. It also provides internet access to students and guests. CareyAir is available on the Hattiesburg, New Orleans, and Tradition campuses.

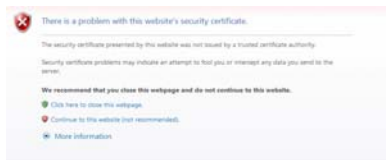
## CareyAir Wireless Network

CareyAir Wireless is a secure university-wide wireless network accessible to students, faculty, staff, and guests at WCU. This wireless network provides internet and local network access to staff and faculty. It also provides internet access to students and guests. CareyAir is available on the Hattiesburg, New Orleans, and Tradition campuses.

### Windows Configuration

*Preparation for your event must have been completed and you should have credentials from IT prior to configuring the CareyAir Wireless network for guest access.*

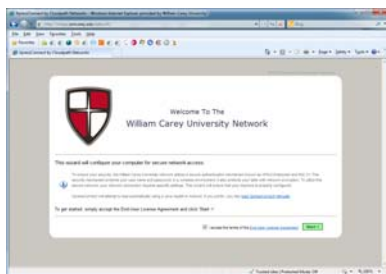
1. Connect to CareyAir Setup and Help.
2. Click Continue to this website if a certificate issue is displayed.



3. Accept the WCU Acceptable Use Policy



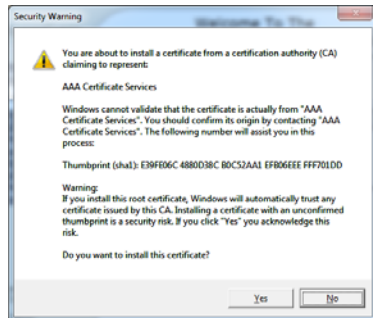
4. Check “I accept the terms of the End-User License Agreement” after reading the agreement and click Start.



5. Type your guest username and password and click continue.



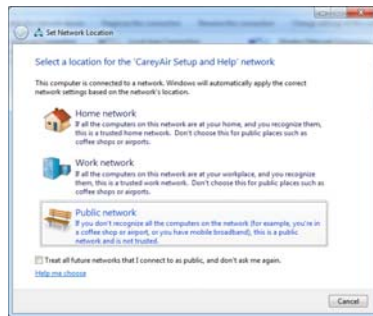
6. Click Yes to install the CareyAir certificates.



7. Click Done to close the CareyAir Setup wizard.



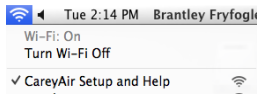
8. Choose Public Network to ensure adequate security on a shared network.



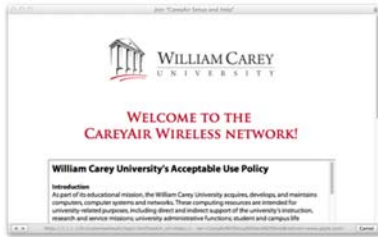
## Mac OS X Wireless Configuration

*Preparation for your event must have been completed and you should have credentials from IT prior to configuring the CareyAir Wireless network for guest access.*

1. Connect to CareyAir Setup and Help.



2. When prompted, accept the WCU Acceptable Use Policy. If you are not prompted, please attempt to go to [www.google.com](http://www.google.com) in your web browser to be redirected to the setup process.



3. Check "I accept the terms of the End-User License Agreement" after reading the agreement and click Start.



4. Type your guest Username and click Continue.



5. Click network profile to start the network installation.



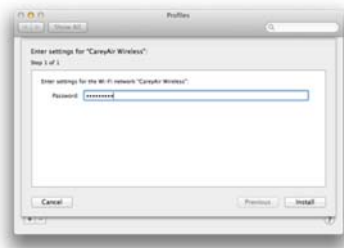
6. On the Profiles window, click Continue to install the WCU certificates.



7. Click Continue to confirm that you would like to install the profile.



8. Type your guest account password in the Password field and click Install.



9. Type your personal administrative password for your system and click OK, if prompted.



10. Close the Profiles window.



11. Close the Join "CareyAir Setup and Help" window.



12. Connect to CareyAir Wireless.

