

**WILLIAM CAREY UNIVERSITY  
FACT BOOK 2010**

# WILLIAM CAREY UNIVERSITY



## **HATTIESBURG CAMPUS**

498 Tuscan Avenue  
Hattiesburg, MS 39401

## **TRADITION CAMPUS**

19640 Highway 67  
Biloxi, MS 39532

## **NEW ORLEANS CAMPUS**

3939 Gentilly Blvd., Box 308  
New Orleans, LA 70126

# **WILLIAM CAREY UNIVERSITY**

## **INTRODUCTION & ACKNOWLEDGEMENTS**

**The entire program of William Carey University is built around the individual student. The University seeks to enhance intellectual and spiritual values and to create a sense of social obligation. The primary aims of faculty and staff are to provide for each student effective instruction, proper example, judicious counsel, and loving concern. In striving to reach these objectives, William Carey University seeks to have each individual within the University community--students, faculty, and administrators--attain his/her highest potential.**

**The Office of Institutional Research developed this document consistent with the Statement of Purpose . This Fact Book has been organized with the student as the primary focus of attention. This book also includes information relating to financial indicators and faculty.**

**Information used in the development of this document was derived from numerous sources. Data sources include the following: Office of Academic Affairs, Office of Enrollment Management, Office of Admissions, Financial Aid Office, and the Library/Learning Resource Center.**

# **WILLIAM CAREY UNIVERSITY**

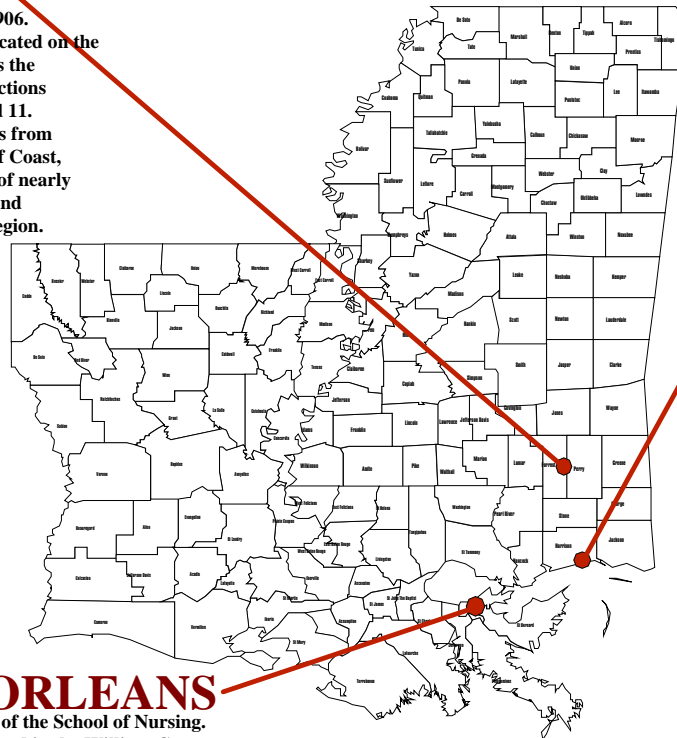
## **MISSION STATEMENT**

**As a Christian university which embraces its Baptist heritage and namesake, William Carey University provides quality educational programs, within a caring Christian academic community, which challenge the individual student to excel in scholarship, leadership, and service in a diverse global society.**

# WILLIAM CAREY UNIVERSITY LOCATIONS

## HATTIESBURG

is the home of the main campus, founded in 1906. On 120 acres, the university is conveniently located on the south side of the city. Hattiesburg is known as the "Hub City" because it is located at the intersections to Interstate 59 and U.S. Highways 49, 98, and 11. The city is centrally located less than 100 miles from the state capital of Jackson, as well as the Gulf Coast, New Orleans, and Mobile. With a population of nearly 50,000, Hattiesburg is the educational, retail and medical center for the southeast Mississippi region.



## TRADITION

William Carey University on the Coast was relocated to the Tradition Development on Highway 67 in Harrison County during the summer of 2009. The new campus, known as William Carey University--Tradition Campus, is accessible from Highway 49 by taking the Hwy 67 South exit and from Interstate 10 by taking either the Woolmarket exit north or the Lorraine Cowan Road exit north. The campus has two state-of-the-art buildings housing administrative and academic offices and classrooms equipped with the latest technology. The new campus opened for classes in the fall of 2009 with room for expansion as enrollment warrants.

## NEW ORLEANS

is one of the sites of the School of Nursing. The school is housed in the William Carey Building on the campus of the New Orleans Baptist Theological Seminary. "America's most unusual city," historic New Orleans offers the student a rich mosaic of culture and tradition.

# WILLIAM CAREY UNIVERSITY

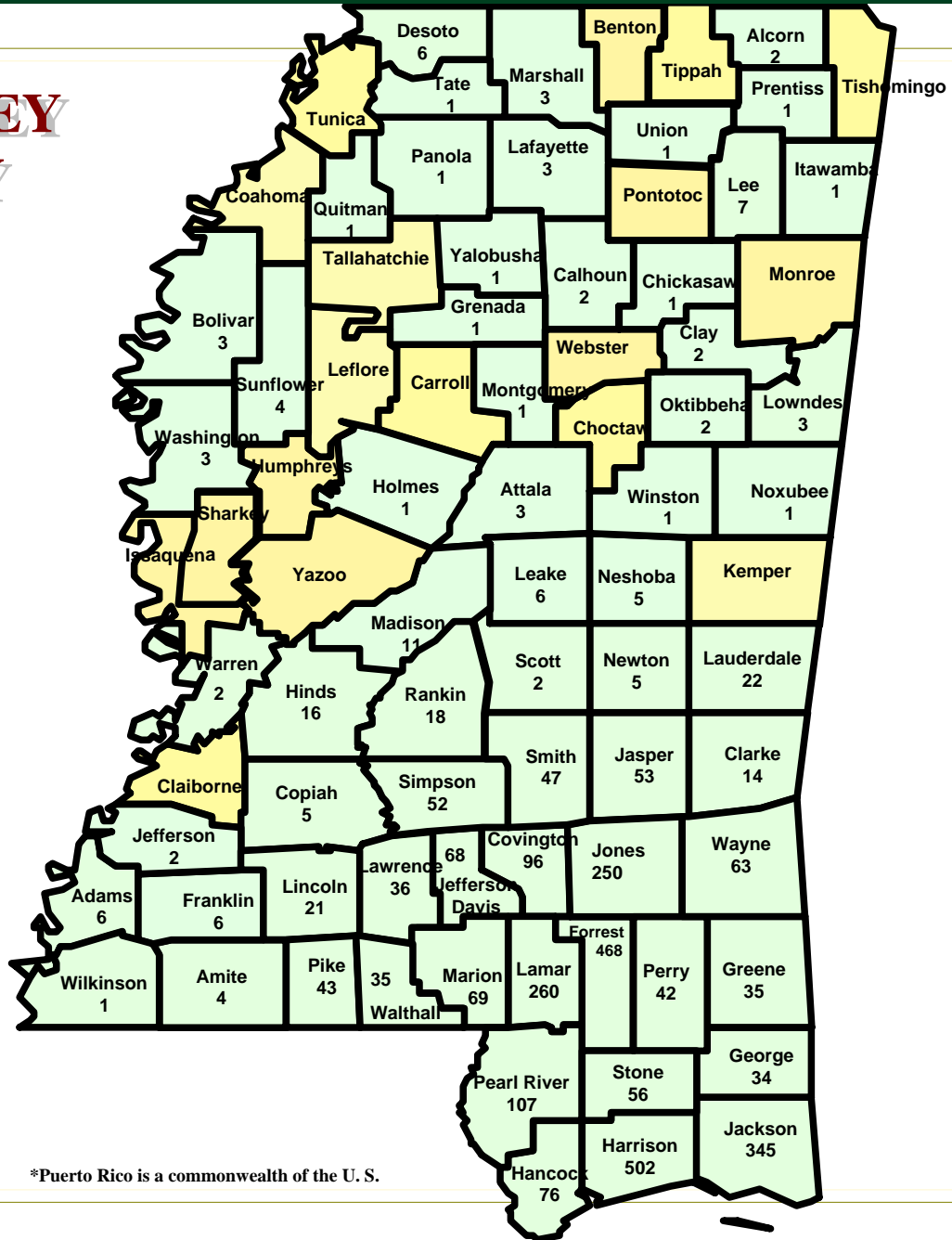
Fall 2010

## Student Count by State

AL - 41	MD - 1	RI - 1
AR - 2	MI - 2	SC - 3
AZ - 1	MO - 6	TN - 6
CA - 8	MS - 2939	TX - 22
CO - 2	NC - 2	UT - 1
CT - 1	NJ - 2	VA - 2
FL - 26	NM - 1	WA - 1
GA - 15	NV - 1	WI - 1
IL - 1	NY - 2	
IN - 1	OK - 6	
LA - 396	PA - 3	

INTERNATIONAL - 108

Australia - 2	Jordan - 1
Brazil - 5	Mexico - 1
Chile - 1	Morocco - 1
China - 3	Nepal - 18
Columbia - 1	Nigeria - 1
Croatia - 2	Peru - 1
Dominican Republic - 4	*Puerto Rico - 2
Ecuador - 1	Russia - 4
Finland - 2	Rwanda - 3
France - 1	Serbia - 1
Germany - 4	South Africa - 1
Greece - 1	South Korea - 2
Guatemala - 1	Spain - 1
Honduras - 2	Sweden - 4
India - 2	United Kingdom - 20
Ireland - 2	Vietnam - 2
Jamaica - 8	Zimbabwe - 3



\*Puerto Rico is a commonwealth of the U. S.

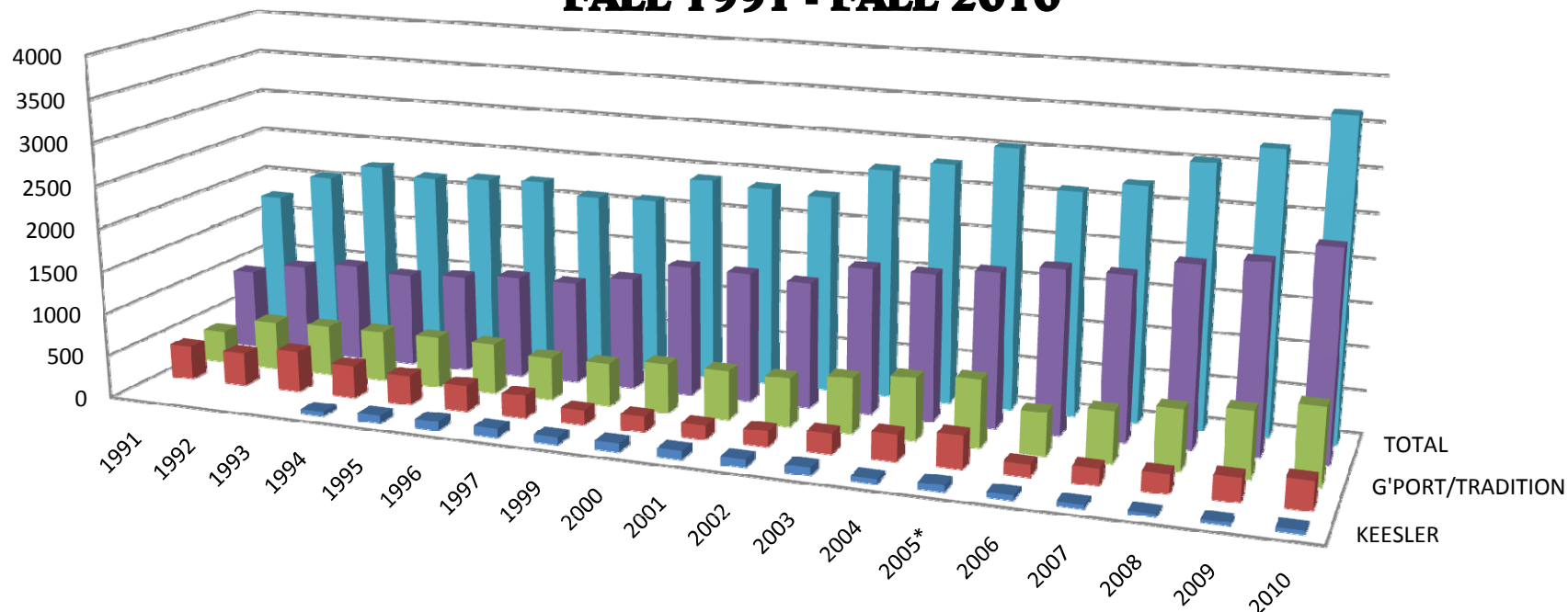




# WILLIAM CAREY UNIVERSITY

## ENROLLMENT BY CAMPUS

### FALL 1991 - FALL 2010



	1991	1992	1993	1994	1995	1996	1997	1999	2000	2001	2002	2003	2004	2005*	2006	2007	2008	2009	2010
■ KEESLER				55	88	102	104	89	102	101	90	87	50	72	54	42	35	37	48
■ NEW ORLEANS	398	387	478	385	341	304	266	172	180	159	176	234	308	381	146	186	218	265	323
■ G'PORT/TRADITION	386	570	589	595	599	588	500	505	575	570	563	641	722	781	490	591	692	758	879
■ HATTIESBURG	948	1079	1154	1103	1148	1207	1203	1318	1529	1515	1472	1708	1707	1792	1898	1895	2076	2166	2389
■ TOTAL	1732	2036	2221	2138	2176	2201	2073	2084	2386	2345	2301	2670	2787	3026	2588	2714	3021	3226	3639

Chart includes graduate & undergraduate students

1998 data NA \* 2005 - 8/26/05 Pre-Katrina

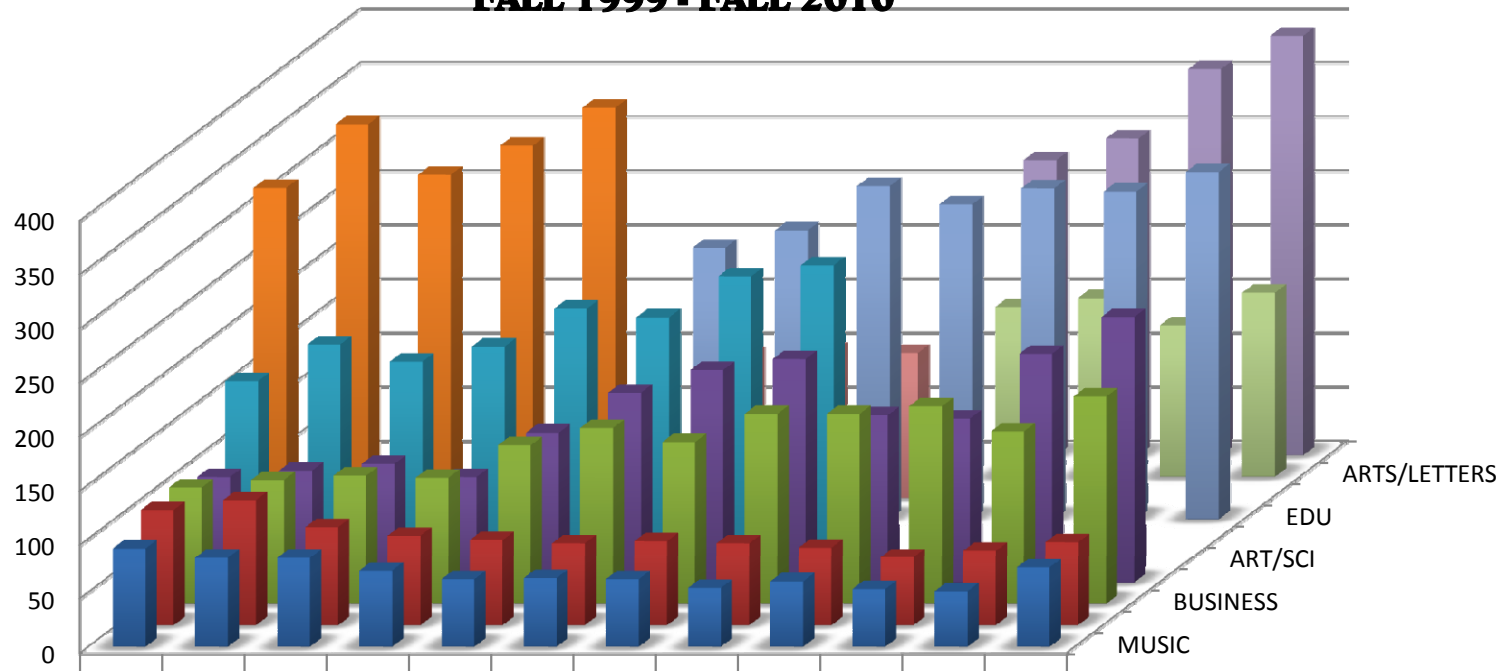


# WILLIAM CAREY UNIVERSITY

## UNDERGRADUATE ENROLLMENT BY SCHOOL

### HATTIESBURG

#### FALL 1999 - FALL 2010



	1999	2000	2001	2002	2003	2004	2005	2006	2007	2008	2009	2010
MUSIC	91	82	82	70	62	63	62	54	60	53	51	73
RELIGION	107	116	91	83	79	76	78	76	72	63	69	77
BUSINESS	108	115	119	117	147	163	150	176	176	183	160	192
NURSING	98	104	110	98	139	176	197	207	155	152	212	246
ART/SCI	167	201	185	199	234	226	264	274				
EDU/PSY	326	385	338	365	400							
EDU						251	267	308	291	306	303	321
PSY						132	136	134				
ARTS/LETTERS									157	165	140	170
NAT/BIO SCIENCES									273	293	357	388

School of PSY created 2004/combined with N&BS in 2007  
 School of EDU/PSY changed to EDU in 2004  
 School of Arts /Letters created in 2007  
 School of Natural & Behaviorral Science created in 2007

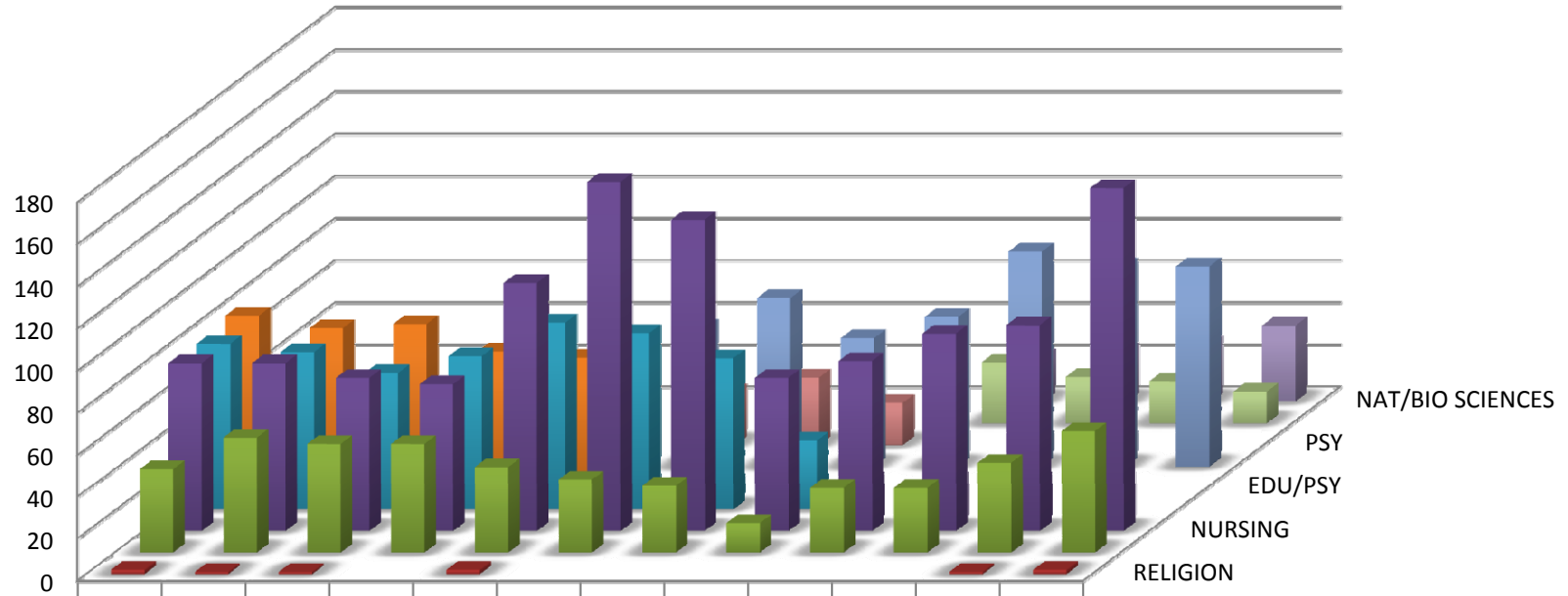
Chart Does Not Include Undecided, General Studies or Graduate Students

# WILLIAM CAREY UNIVERSITY

## UNDERGRADUATE ENROLLMENT BY SCHOOL

### GULFPORT/TRADITION

#### FALL 1999 - FALL 2010

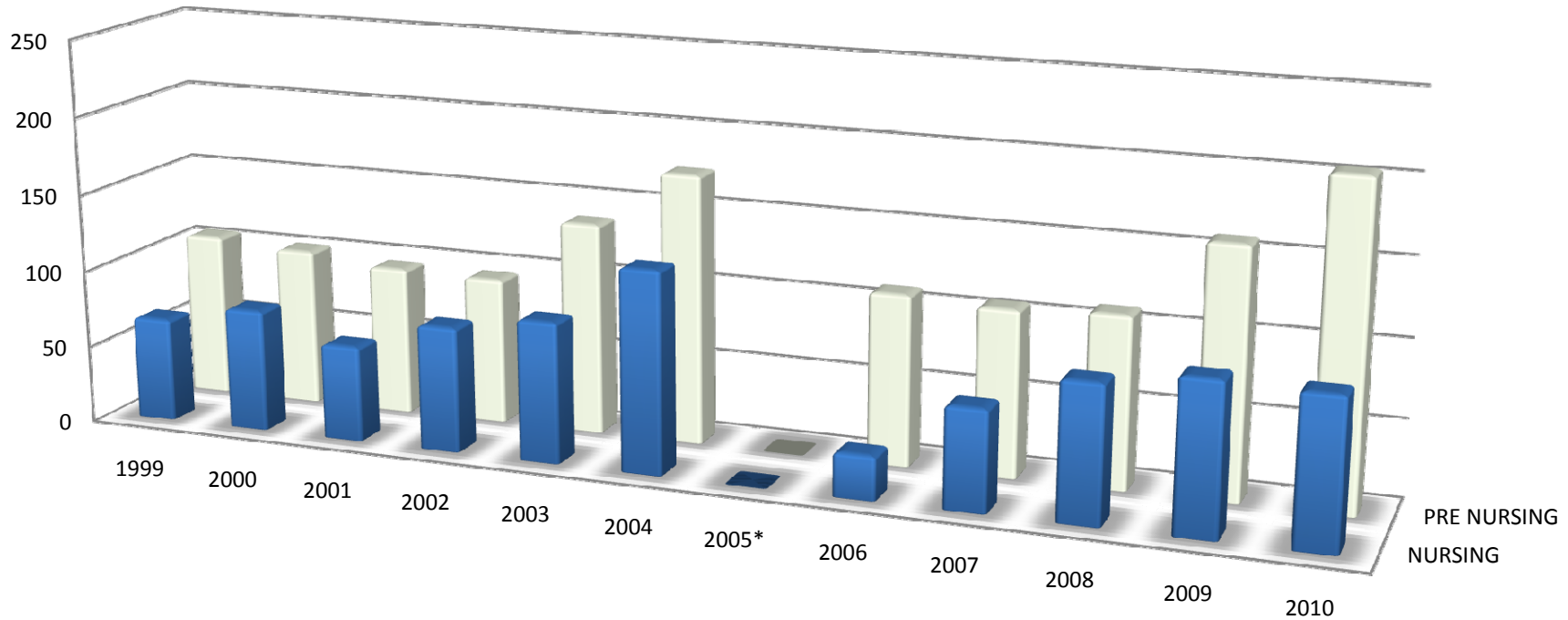


	1999	2000	2001	2002	2003	2004	2005	2006	2007	2008	2009	2010
RELIGION	2	1	1		2						1	2
BUSINESS	40	55	52	52	41	35	32	14	31	31	43	58
NURSING	80	80	73	70	118	166	148	73	81	94	98	163
ART/SCI	79	75	65	73	89	84	72	33				
EDU/PSY	82	76	78	65	62							
EDU						66	80	61	71	102	95	95
PSY						25	32	20				
ARTS/LETTERS									29	22	20	15
NAT/BIO SCIENCES									21	24	27	36

Chart Does Not Include Undecided, General Studies or Graduate Students

School of PSY created 2004/combined with N&BS in 2007  
 School of EDU/PSY changed to EDU in 2004  
 School of Arts /Letters created in 2007  
 School of Natural & Behaviorral Science created in 2007

**WILLIAM CAREY UNIVERSITY**  
**UNDERGRADUATE ENROLLMENT BY SCHOOL**  
**NEW ORLEANS**  
**FALL 1999 - FALL 2010**



	1999	2000	2001	2002	2003	2004	2005*	2006	2007	2008	2009	2010
■ NURSING	67	79	62	81	91	130	0	28	65	88	97	95
■ PRE NURSING	106	102	96	95	137	174	0	110	107	110	159	205

CHART DOES NOT INCLUDE UNDEDICED, GENERAL STUDIES, OR PSYCHOLOGY MAJORS

\*8-29-06 Hurricane Katrina

**WILLIAM CAREY UNIVERSITY**  
**UNDERGRADUATE ENROLLMENT**  
**by CAMPUS/GENDER & ETHNIC CLASSIFICATION**  
**FALL 1999 - FALL 2010**

<b>Hattiesburg</b>														
	American Indian		Asian		Black		Hispanic		International		Other		White	
	Female	Male	Female	Male	Female	Male	Female	Male	Female	Male	Female	Male	Female	Male
1999	1	1	1	1	175	61	1	6	5	2	6	5	434	319
2000	2		3	2	230	81	1	5	5		7	4	470	299
2001	3	1		1	213	70	1	4	7		3	3	430	280
2002	2	2	1		219	68	2	5	5		4	2	415	280
2003	4	2	1		247	71	1	8	11	17	3	1	476	304
2004	4	2	3	2	276	70	2	5	12	20	2	1	470	277
2005	3	4	1	2	260	74	4	8	9	12	4	2	565	279
2006	4	4	4	2	261	68	3	6	18	17	9	3	599	300
2007	2	4	5	3	240	76	4	6	22	25	10	2	567	310
2008	1	1	4	4	251	76	4	6	21	30	10	3	581	341
2009	1	1	1	2	298	80	10	7	31	43	10	6	639	353
2010	1	2	3	1	388	103	15	9	39	64	13	5	617	310

<b>Tradition</b>														
	American Indian		Asian		Black		Hispanic		International		Other		White	
	Female	Male	Female	Male	Female	Male	Female	Male	Female	Male	Female	Male	Female	Male
1999	1	2	4	2	65	20	3	6	7	9	1	2	170	105
2000	2		7	1	78	18	10	5	6	8	3	1	174	116
2001	2		4	1	72	11	5	8	5	12	2	1	183	101
2002	2		2	1	67	15	7	1	9	16	2	2	165	96
2003	2	1	3	1	72	12	12	4		1	5	1	177	85
2004	1		4	3	82	18	11	5			5	1	218	73
2005	1		6	4	90	15	9	5			3	2	233	73
2006			1	1	51	4	4	1		1	3		138	41
2007	1		5	1	61	12	2					1	133	36
2008	1		5	1	74	19	5				1	1	173	36
2009	1		5		75	22	15					2	181	40
2010	1		5	1	99	26	8	1			4	3	217	55

<b>New Orleans</b>														
	American Indian		Asian		Black		Hispanic		International		Other		White	
	Female	Male	Female	Male	Female	Male	Female	Male	Female	Male	Female	Male	Female	Male
1999		1	3		88	4	10	1		1	1		54	10
2000	1	1	2		101	6	10		2	1	1	1	47	7
2001	1		3		91	4	7	2	1	1	2		43	3
2002	2		2		96	3	3		2	1	3		55	9
2003	1		3		140	3	14		1		3		56	11
2004	2		5		186	7	15	2	1		2	1	74	13
2005	3		6		221	12	16	2	1		3		105	13
2006	1		1		75	4	6	1			2		49	6
2007	2		3		90	9	9	4			3		56	6
2008	2		2		114	6	9	3			6		66	9
2009			4		140	5	11	4			6	1	72	11
2010	1		4		181	10	14	5			10		84	15

# WILLIAM CAREY UNIVERSITY

## MEAN STUDENT AGE by CAMPUS/MAJOR

### FALL 1999 - FALL 2010

Hattiesburg																	
	ART	BIO	CHE	MAT	LAN/LIT	HIS	COM/THI	BUS	EDU	PSY	PED	REL	MUS	NUR	GEN STU	UND	MEAN
1999		22.5	22	23.6	25.2	23.9	21.4	24.3	27.9	22.4	22.6	22.4	22.2	26.6	35.5	19.4	24.5
2000		22.4	21.8	23.4	25.2	24.5	21.3	24.4	27.9	25.5	22.5	22.3	22.1	26.6	34.9	19.5	24.5
2001		22.4	22.1	25.1	24	21.7	21.2	23.8	27.7	26.6	22.9	22.7	23.3	27.7	34.4	22.4	25.2
2002		21.6	23.6	24.2	23.1	21.7	21.3	24.5	26.7	28.5	21.3	23.5	21.5	26	33.3	23.2	24.7
2003	22	21.8	23	23.5	23.7	24.8	22.6	23.5	26.1	27.7	21.4	24.7	22.4	25.1	33.5	21.6	24.7
2004	18	21.5	21.2	21.2	23.2	22.5	22	23.4	26.9	26.6	22.9	24.8	22.3	25.5	32.2	20.2	24.5
2005	19.7	22.3	23.9	22.5	24.4	23.3	20.1	23.6	26.3	25.9	23.4	23.4	22.4	24.6	27.5	20.3	24.1
2006	26	23.1	26	24	23	23.9	20.5	24	27	26	23	23.3	23.2	24.8	27	19.8	24.2
2007	18.7	22.3	23	22.6	24.2	24.1	20.9	23.8	26.7	24.8	22.3	24	22.2	23.6	32.2	19.6	23.8
2008	27.1	22.8	18.6	19.6	22.7	23.4	20.9	23.6	26.4	25.7	21.9	25.1	21.5	24.1	32	18.2	23.8
2009	25.1	22.2	21.1	22	24	23.1	26.1	23.4	26.1	26.3	21.6	25.9	21.7	25.5	32	18.8	24
2010	25.4	22.3	20.6	23.2	25.3	24.7	20.5	24.7	26.3	26.9	23.7	27.5	22.2	25.5	27	21	

Tradition																	
	ART	BIO	CHE	MAT	LAN/LIT	HIS	COM/THI	BUS	EDU	PSY	PED	REL	MUS	NUR	GEN STU	UND	MEAN
1999	27.7	24.4	20.6	34	25	30.3		28.8	29.8	29.4	26	20		28.3	35.9	23.9	29.3
2000	27.7	24.3		28.5	25	30.2		28.7	29.7	29.3	26	20		28.2	35.8	23.8	27.6
2001	24.6	21.7		20.6	32	32.5		26.9	30.2	28.7	20	21		29.4	35	25.1	29.1
2002	24.6	23.3	21		27.5	25.2		25.7	29.9	28.6	19.4		18	29.5	36.5	22.8	28.7
2003	25.8	24.9	22	28	29	27		26.2	33.7	30	35	40		30.4	37	29.3	30.3
2004	25.9	23.9			24	29.5	20	30.6	30.7	31.8				28.9	36.6		29.4
2005	26.2	22.8		23.5	34.8	31.5		30.7	30.3	28.3	30			29.5	31.6	21.3	29
2006	27.9			28.3	27	24		32.6	30.5	30.1				28.3	37.6	27.3	30.2
2007	28	23		27	26.5	33.7	26	29.2	30.1	30.6				27.8	35.4		29.6
2008	27.6	24.3			27.5	31		32.6	29.9	33.2				30	33.5	18	30.5
2009	28.7	23.5		22	20	40		30.9	29.4	35.3	32	28		30.5	37.1	25.7	31
2010	27.9	29.2				22.5		31.5	29.1	33.4		31		29.8	41.5	38.1	30.7

New Orleans																	
	ART	BIO	CHE	MAT	LAN/LIT	HIS	COM/THI	BUS	EDU	PSY	PED	REL	MUS	NUR	GEN STU	UND	MEAN
1999														27.1			27.1
2000														27.1			27.1
2001														27.8			27.8
2002														28.5			28.5
2003														28.3			28.3
2004										25				28.5	38		28.5
2005										24				27.5	33.2	24	27.7
2006										30				26.8	35		26.9
2007										36				26.6	31.6		27
2008		20								31.5		43		27.6	29.7		27.7
2009														27.3	35	24	27.5
2010														27.4	33.3	35	27.7

Hattiesburg includes Shelby  
Gulfport includes Keesler

**WILLIAM CAREY UNIVERSITY**  
**CHURCH RELATED VOCATIONAL STUDENTS & CHURCH RELATED DEPENDENT STUDENTS**  
**BY CAMPUS & SCHOOL FALL 2000 - FALL 2010**

HATTIESBURG																				
FALL	AHS		BUS		EDU & PSY		REL		MUSIC		NUR		GENERAL STUDIES		TOTAL					
	CRV	SBCD	CRV	SBCD	CRV	SBCD	CRV	SBCD	CRV	SBCD	CRV	SBCD	CRV	SBCD	CRV	SBCD				
2000	31	1	10	1	44	1			92	21		5	1			215	5			
2001	28	1	9	1	34				78	1	16	4				172	3			
2002	30	1	6	1	35				67		13	3		9		163	2			
2003	25		3	1	32				54		11	2		4		131	1			
2004					EDU															
2005																				
2006	12		2	1	12			8	45		5	2				86	1			
	Arts&Letters							Nat.&BehaSci.												
2007	6	2	2		7	3	9	3	36		4		1	2		66	9			
2008	5	1	1	1		3	12	1	35					2		55	6			
2009	6		2	1	3		9	1	34					2		56	2			
2010	3		1		2		6		26		3	2		1		44				

TRADITION																	
FALL	AHS		BUS		EDU & PSY		REL		MUSIC		NUR		GENERAL STUDIES		TOTAL		
	CRV	SBCD	CRV	SBCD	CRV	SBCD	CRV	SBCD	CRV	SBCD	CRV	SBCD	CRV	SBCD	CRV	SBCD	
2000					5		1									7	
2001					6	1	1				1					8	1
2002					3	1					1					4	1
2003																	
2004																	
2005																	
2006					1											1	
2007			1													1	
2008					1											1	
2010							1						1			2	

NEW ORLEANS															
FALL	AHS		BUS		EDU & PSY		REL		MUSIC		NUR		TOTAL		
	CRV	SBCD	CRV	SBCD	CRV	SBCD	CRV	SBCD	CRV	SBCD	CRV	SBCD	CRV	SBCD	
2000												3		3	
2001												1		1	
2002												3		3	
2003												4		4	
2004															
2005															
2006												1		1	
2007												1	1	1	
2008												1	1	1	
2009													1	1	
2010												1		1	



# PRODUCTION OF SCHOOL/DEPARTMENT/AREA

Hattiesburg														
	99-00	00-01	01-02	02-03	03-04	04-05	05-06	06-07	07-08	08-09	09-10	10-11	Total	
<b>Art</b>	360	432	489	456	480	519	429	508	363	360	585	414	5,395	5,395
<b>Biology</b>	1,635	1,557	1,763	1,812	2,220	2,486	2,663	2,786	2,909	2,966	3,464	2,314	28,575	28,575
<b>Business</b>	2,720	2,942	3,100	2,914	3,590	3,885	3,386	3,938	4,378	4,389	4,560	2,700	42,502	42,502
<b>Chemistry</b>	816	871	1,028	969	1,043	1,160	1,148	1,258	1,335	1,215	1,625	980	13,448	13,448
<b>Comm./Jo</b>	1,427	1,697	1,610	1,788	1,607	1,515	1,556	1,693	1,557	1,521	1,521	1,179	18,671	18,671
<b>Education</b>	3,598	3,417	3,594	3,393	3,259	3,189	4,284	4,539	4,461	4,332	4,428	2,299	44,793	44,793
<b>English</b>	3,870	3,984	3,628	3,960	4,627	3,926	4,170	4,491	4,638	4,789	4,716	3,603	50,402	50,402
<b>History</b>	1,994	2,349	1,927	2,307	2,679	2,728	2,872	2,862	3,021	3,037	3,381	2,031	31,188	31,188
<b>MAT</b>	1,241	1,563	1,252	1,393	1,634	1,491	1,617	1,906	1,757	2,107	2,291	1,862	20,114	20,114
<b>Music</b>	2,504	2,118	2,037	1,839	1,802	1,757	1,873	1,794	1,894	1,653	1,838	1,422	22,531	22,531
<b>Nursing</b>	1,362	1,049	1,381	1,058	1,535	2,112	3,577	2,578	1,588	1,748	2,712	1,391	22,091	22,091
<b>Physical</b>	2,100	2,297	1,998	2,080	2,418	2,930	2,663	2,912	2,763	2,733	2,845	1,969	29,708	29,708
<b>Psychology</b>	3,646	4,267	3,723	4,266	5,373	5,045	5,557	5,000	5,443	6,777	7,905	4,695	61,697	61,697
<b>Religion</b>	3,520	3,796	3,383	3,175	3,853	3,492	3,728	3,748	3,702	3,469	4,031	2,778	42,675	42,675
<b>Philosophy</b>	223	276	339	318	315	291	306	330	276	336	376	237	3,623	3,623
<b>MLS/AOS</b>	11	10	33	25	30	18	12	13	0	7	2	3	164	164
<b>HUM/SSS</b>	39	93	45	36	36	39	45	30	21	30	102	102	618	618
<b>HON</b>	31	39	23	12	5	6	3	0	0	29	43	2	193	193
<b>Total</b>	31,097	32,757	31,353	31,801	36,506	36,589	39,889	40,386	40,106	41,498	46,425	29,981	438,388.00	438,388.00

End of Trimester

# PRODUCTION OF SCHOOL/DEPARTMENT/AREA GULFPORT/TRADITION

	Tradition													
	99-00	00-01	01-02	02-03	03-04	04-05	05-06	06-07	07-08	08-09	09-10	10-11	Total	
<b>Art</b>	1,134	1,268	1,093	1,167	1,485	1,479	786	621	585	540	486	255	10,899	10,899
<b>Biology</b>	353	386	448	408	627	607	311	279	334	469	469	462	5,153	5,153
<b>Business</b>	1,186	1,344	1,601	1,223	1,028	982	576	562	841	974	1,450	1,039	12,806	12,806
<b>Chemistry</b>	239	322	232	244	215	194	74	128	144	129	169	79	2,169	2,169
<b>Comm./Jo</b>	108	186	135	189	99	126	27	27	39	75	78	42	1,131	1,131
<b>Education</b>	739	783	903	594	717	960	1,235	1,208	1,236	1,800	1,503	930	12,608	12,608
<b>English</b>	717	783	528	531	537	690	407	370	516	501	417	288	6,285	6,285
<b>History</b>	384	450	474	369	393	429	270	243	435	414	465	288	4,614	4,614
<b>MAT</b>	289	309	306	237	279	369	270	189	210	321	334	321	3,434	3,434
<b>Music</b>	36	27	84	74	51	66	90	63	108	84	84	78	845	845
<b>Nursing</b>	1,327	973	991	1,082	1,931	2,751	2,040	1,044	1,174	1,443	1,976	1,032	17,764	17,764
<b>Physical</b>	339	235	297	364	345	354	293	300	376	365	270	238	3,776	3,776
<b>Psychology</b>	1,235	1,190	1,171	1,169	1,188	1,447	1,230	933	829	923	1,304	890	13,509	13,509
<b>Religion</b>	645	661	651	702	711	924	642	531	507	705	702	663	8,044	8,044
<b>Philosophy</b>	180	294	177	231	252	246	162	114	111	147	159	168	2,241	2,241
<b>HON</b>	41	35	18	0	0	0	0	0	0	0	0	0	94	94
<b>Total</b>	8,952	9,246	9,109	8,584	9,858	11,624	8,413	6,612	7,445	8,890	9,866	6,773	105,372.00	105,372.00

End of Trimester

# PRODUCTION OF SCHOOL/DEPARTMENT/AREA KEESLER

	Keesler AFB													Total
	99-00	00-01	01-02	02-03	03-04	04-05	05-06	06-07	07-08	08-09	09-10	10-11	Total	
<i>Art</i>	24	15	72	69	51	75	27	54	12	30	21	3	453	453
<i>Biology</i>	89	95	82	35	34	73	18	34	23	36	43	12	574	574
<i>Business</i>	983	1,195	904	965	780	486	412	342	285	237	232	111	6,932	6,932
<i>Chemistry</i>	22	26	26	39	36	33	9	4	3	30	3	0	231	231
<i>Comm./Jo</i>	24	21	15	21	12	0	9	6	6	12	9	3	138	138
<i>Education</i>	90	141	135	72	24	48	15	45	57	21	45	57	750	750
<i>English</i>	72	84	57	81	78	75	27	24	42	30	45	21	636	636
<i>History</i>	102	96	87	48	81	27	33	39	51	60	69	6	699	699
<i>MAT</i>	37	36	36	12	21	15	12	18	15	21	15	0	238	238
<i>Music</i>	0	12	9	12	9	0	9	6	12	6	6	0	81	81
<i>Nursing</i>	73	183	150	177	139	189	199	189	117	175	173	156	1,920	1,920
<i>Physical</i>	52	30	21	15	24	27	14	23	28	25	27	7	293	293
<i>Psychology</i>	427	411	558	405	338	224	226	289	196	190	207	52	3,523	3,523
<i>Religion</i>	210	258	285	213	180	117	102	84	78	81	75	42	1,725	1,725
<i>Philosophy</i>	21	24	6	39	24	27	18	24	9	21	21	15	249	249
<i>MLS/AOS</i>	0	0	20	12	0	0	0	0	0	0	0	0	32	32
<i>HON</i>	3	1	0	0	0	0	0	0	0	0	0	0	4	4
<b>Total</b>	<b>2,229</b>	<b>2,628</b>	<b>2,463</b>	<b>2,215</b>	<b>1,831</b>	<b>1,416</b>	<b>1,130</b>	<b>1,181</b>	<b>934</b>	<b>975</b>	<b>991</b>	<b>485</b>	<b>18,478.00</b>	<b>18,478.00</b>

End of Trimester

# PRODUCTION OF SCHOOL/DEPARTMENT/AREA NEW ORLEANS

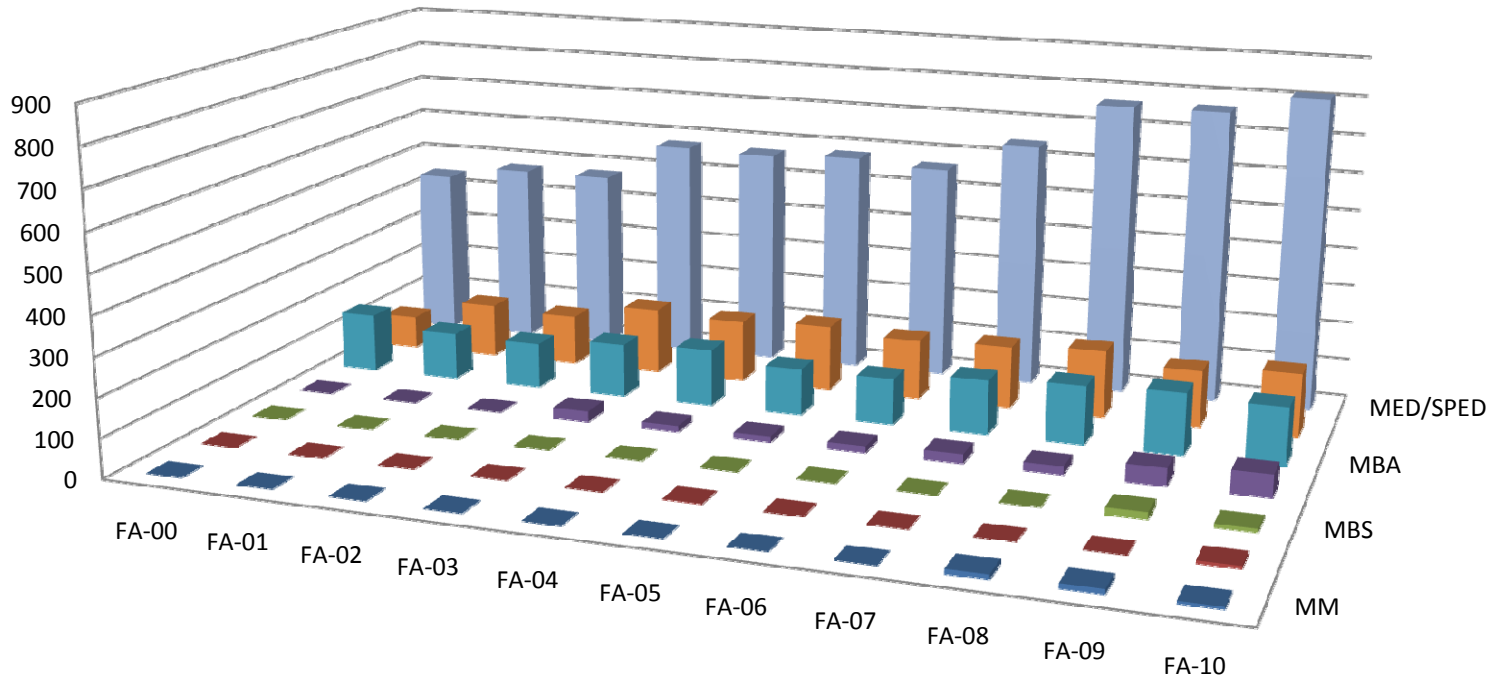
New Orleans														
	99-00	00-01	01-02	02-03	03-04	04-05	05-06	06-07	07-08	08-09	09-10	10-11	Total	
<i>Biology</i>	741	589	559	875	1,144	1,341	412	877	999	914	1,281	734	10,466	10,466
<i>Business</i>	120	120	48	96	99	48	0	78	6	51	45	0	711	711
<i>Chemistry</i>	316	256	352	324	244	272	136	164	204	276	288	12	2,844	2,844
<i>Comm./Jo</i>	153	114	129	165	183	243	87	150	150	207	213	159	1,953	1,953
<i>English</i>	231	237	228	309	396	522	153	294	402	366	435	264	3,837	3,837
<i>History</i>	417	210	285	231	489	816	183	527	624	646	810	513	5,751	5,751
<i>MAT</i>	219	165	135	81	114	198	36	90	123	129	162	144	1,596	1,596
<i>Music</i>	126	114	90	120	147	180	0	105	102	126	180	135	1,425	1,425
<i>Nursing</i>	2,076	2,321	2,330	2,503	3,003	4,125	0	1,064	1,982	2,541	3,263	1,522	26,730	26,730
<i>Physical</i>	248	169	199	238	337	645	144	274	450	428	500	347	3,979	3,979
<i>Psychology</i>	416	304	362	413	886	962	326	616	828	732	1,011	832	7,688	7,688
<i>Religion</i>	450	399	465	570	834	954	159	447	519	591	906	606	6,900	6,900
<i>Philosophy</i>	144	117	177	213	231	261	108	78	96	180	279	171	2,055	2,055
Total	5,657	5,115	5,359	6,138	8,107	10,567	1,744	4,764	6,485	7,187	9,373	5,439	75,935.00	75,935.00

End of Trimester

# WILLIAM CAREY UNIVERSITY

## GRADUATE ENROLLMENT STUDENTS/PROGRAM

### FALL 2000 - FALL 2010



	FA-00	FA-01	FA-02	FA-03	FA-04	FA-05	FA-06	FA-07	FA-08	FA-09	FA-10
■ MM	0	0	0	0	0	0	0	0	12	12	6
■ MA-ENG	0	0	0	0	0	1	0	0	0	0	7
■ MBS	0	0	0	0	0	0	0	0	0	18	9
■ MSN	0	0	0	28	16	15	17	24	21	45	58
■ MBA	152	123	118	139	148	121	120	141	152	159	149
■ MS-PSY	86	141	132	173	162	171	156	162	175	147	164
■ MED/SPED	440	473	472	573	567	577	562	640	762	763	810

**WILLIAM CAREY UNIVERSITY**  
**GRADUATE ENROLLMENT**  
**by CAMPUS/GENDER & ETHNIC CLASSIFICATION**  
**FALL 1999 - FALL 2010**

Graduate - Hattiesburg														
	American Indian		Asian		Black		Hispanic		International		Other		White	
	Female	Male	Female	Male	Female	Male	Female	Male	Female	Male	Female	Male	Female	Male
1999					77	14							184	43
2000	1				99	20		1					216	89
2001		1			109	12	2	2					346	75
2002					94	13	1	2					269	88
2003	2				137	16							319	85
2004	1		2		142	22	1						304	93
2005	1	2	2		155	21	2			1			317	69
2006			1	1	160	19				2			294	95
2007		2			167	23		1					305	99
2008	2	1	2		179	30	2	3	1	2			416	105
2009	3		1	1	180	38	1	1		1			373	108
2010	1	1	7	11	207	45	3	2	1	1	3	2	398	140

Graduate-Tradition														
	American Indian		Asian		Black		Hispanic		International		Other		White	
	Female	Male	Female	Male	Female	Male	Female	Male	Female	Male	Female	Male	Female	Male
1999			1	1	21	14	3			1			115	47
2000			5	1	31	17	2	3		2			143	45
2001	2		1	1	37	10	3	1	1	2			154	52
2002	2		2	1	42	11	6	1	1	2			133	65
2003	1		3	1	63	18	3	3	1	2			197	47
2004	1		3		56	10	1	2					214	64
2005	3	1	3		75	24	6	2	0	1			228	70
2006	2		1		54	14	5	2					177	48
2007			7		64	15	5	1		1			210	65
2008			4	1	76	26	3	1					247	50
2009	1		2		77	22	5	1					248	76
2010			4		79	26	8				1		298	91



# WILLIAM CAREY UNIVERSITY

## GRADUATE ENROLLMENT MEAN STUDENT AGE by CAMPUS/ MAJOR FALL 1999 - FALL 2010

Graduate-Hattiesburg										
	OMS	MA	MBA	MBS	MS-PSY	MSN	MED & MBA	MED	MM	EDS
1999			32.9		32		34.9			
2000			32.5		31.7		34.6			
2001			31.1		32.7		34.2			
2002			29.4		32.5		33			
2003			28.3		34.4			33		
2004			30		34			33.8		
2005			29.4		33.5			33.3		
2006			29.8		32.5			32.4		
2007			29.7		32.5			32.1		
2008			30.7		33.5	38.4		33.1	41.1	
2009			30.8	24.8	32.8	38.9		32.8	32.6	
2010	26.2	27.5	28.8	25.4	31.2	38.9		32.8	28.3	36.18

Graduate-Tradition										
	OMS	MA	MBA	MBS	MS-PSY	MSN	MED & MBA	MED	MM	EDS
1999			33.8		27.8		34.6			
2000			32.4		30.2		33.9			
2001			34		31.5		36			
2002			36		32		36			
2003			31.6		36.5	39.4		35.4		
2004			33.3		37.7	38.9		35.4		
2005			36.6		34.9	38.8		34		
2006			35.5		33.4	39.5		33.4		
2007			32.8		34.2	38.6		34.9		
2008			33.9		34.6	39		34.3		
2009			33.3		36.1			33.4		
2010			32.5		36.4	43		43.1		33.5

# PRODUCTION OF SCHOOL/DEPARTMENT/AREA

## Graduate - Hattiesburg

	Graduate-Hattiesburg													
	99-00	00-01	01-02	02-03	03-04	04-05	05-06	06-07	07-08	08-09	09-10	10-11 *	Total	
<b>Art</b>	0	3	12	6	0	0	0	12	0	0	3	0	36	36
<b>Biology</b>	0	0	0	0	3	0	0	32	132	50	203	140	560	560
<b>Business</b>	1,295	1,540	1,017	1,209	1,017	975	1,140	1,107	1,032	879	891	597	12,699	12,699
<b>Chemistry</b>	0	0	0	0	0	0	4	0	8	3	4	0	19	19
<b>Comm./Jo</b>	0	0	0	0	0	1	0	0	0	0	0	0	1	1
<b>Education</b>	5,577	5,365	5,792	6,480	7,780	7,723	7,151	7,499	8,041	8,380	7,566	5,799	83,153	83,153
<b>English</b>	333	324	249	315	342	393	321	381	378	417	603	363	4,419	4,419
<b>History</b>	63	21	12	36	27	33	24	111	168	201	198	114	1,008	1,008
<b>MAT</b>	99	72	63	90	108	66	66	78	117	69	123	40	991	991
<b>Music</b>	0	0	0	0	0	1	0	6	117	345	235	36	740	740
<b>Nursing</b>	3	0	0	0	0	0	0	5	0	698	687	566	1,959	1,959
<b>Physical</b>	3	0	0	0	0	11	0	0	10	0	0	0	24	24
<b>Psychology</b>	912	1,533	2,097	2,115	2,067	2,088	2,283	2,232	2,285	2,577	2,133	2,197	24,519	24,519
<b>Religion</b>	0	0	0	0	3	0	3	0	3	0	3	0	12	12
<b>Philosophy</b>	0	0	0	0	0	0	0	3	0	0	0	0	3	3
<b>MLS/AOS</b>	0	0	0	0	3	0	0	0	0	0	0	0	3	3
<b>MBS</b>	0	0	0	0	0	0	0	0	0	0	480	297	777	777
<b>OMS</b>	0	0	0	0	0	0	0	0	0	0	0	4,360	4,360	4,360
<b>Total</b>	8,285	8,858	9,242	10,251	11,350	11,291	10,992	11,466	12,291	13,619	13,129	14,509	135,282.70	135,282.70

\* to date 07/11/2011

# PRODUCTION OF SCHOOL/DEPARTMENT/AREA

## Graduate - Tradition

	Graduate- Tradition													
	99-00	00-01	01-02	02-03	03-04	04-05	05-06	06-07	07-08	08-09	09-10	10-11*	Total	
<b>Art</b>	54	45	51	39	21	12	9	12	6	42	21	21	333	333
<b>Biology</b>	0	6	0	0	3	0	0	0	0	0	22	7	38	38
<b>Business</b>	1,629	1,649	1,809	1,668	2,166	1,785	1,621	1,821	2,340	2,223	2,229	1,167	22,107	22,107
<b>Education</b>	2,601	2,973	3,095	3,885	4,133	4,137	3,298	3,480	4,329	4,413	5,374	2,682	44,400	44,400
<b>English</b>	54	63	45	99	93	105	45	45	84	66	120	78	897	897
<b>History</b>	33	3	0	3	12	3	0	9	15	3	3	0	84	84
<b>MAT</b>	9	15	15	9	12	12	6	18	12	6	42	0	156	156
<b>Nursing</b>	0	0	0	0	639	413	305	531	473	223	255	143	2,982	2,982
<b>Physical</b>	0	0	0	0	0	1	0	0	0	0	0	0	1	1
<b>Psychology</b>	564	948	1,218	1,107	1,059	1,042	757	719	722	816	743	351	10,046	10,046
<b>Religion</b>	0	0	0	3	0	0	0	0	0	0	0	0	3	3
<b>Philosophy</b>	0	0	0	3	0	0	0	0	0	0	0	0	3	3
<b>MLS/AOS</b>	0	0	8	16	0	0	0	0	0	0	0	0	24	24
<b>Total</b>	<b>4,944</b>	<b>5,702</b>	<b>6,241</b>	<b>6,832</b>	<b>8,138</b>	<b>7,510</b>	<b>6,041</b>	<b>6,635</b>	<b>7,981</b>	<b>7,792</b>	<b>8,809</b>	<b>4,449</b>	<b>81,074.00</b>	<b>81,074.00</b>

\* to date 07/11/2011

# PRODUCTION OF SCHOOL/DEPARTMENT/AREA Graduate-Keesler

	Graduate-Keesler											Total	
	99-00	00-01	02-03	03-04	04-05	05-06	06-07	07-08	08-09	09-10	10-11*		
<i>Business</i>	24	0	162	255	381	327	282	138	138	336	156	2,199	2,199
<i>Education</i>	0	3	12	30	3	6	12	45	21	105	39	276	276
<i>English</i>	0	0	3	0	0	0	0	0	0	0	0	3	3
<i>History</i>	0	0	0	0	3	0	0	0	0	0	0	3	3
<i>Nursing</i>	0	0	0	0	0	20	0	0	0	0	0	20	20
<i>Psychology</i>	0	0	0	36	3	12	0	0	0	18	18	87	87
<b>Total</b>	<b>24</b>	<b>3</b>	<b>177</b>	<b>321</b>	<b>390</b>	<b>365</b>	<b>294</b>	<b>183</b>	<b>159</b>	<b>459</b>	<b>213</b>	<b>2,588.00</b>	<b>2,588.00</b>

\* to date 07/11/2011

**EMPLOYEES WITH FACULTY RANK**  
Hattiesburg/Tradition/New Orleans - FALL 2010

SCHOOL	PROFESSOR		ASSOCIATE PROFESSOR		ASSISTANT PROFESSOR		INSTRUCTOR		LECTURER		GENDER	
	Male	Female	Male	Female	Male	Female	Male	Female	Male	Female	Male	Female
School of Missions & Biblical Studies	D. Browning*+ D. Caldwell B. Crockett**+ S. Hummel				T. Glaze		B. Cleveland		G. Blackwell		7	0
School of Business	B. Brown+ R. Ellis+		P. Turnquist	C. Dale E. Lewis	M. Madaris J. McCay	L. Glaze P. Jones	D. Brockway B. Cousins	S. Chamber-Jones	J. Andrews J. Bracey		9	5
School of Arts & Letters	D. Browning*+ B. Crockett**+ M. Noonkester+ T. Richardson M. Wheeler+	R. Diket*+	M. Nicovich	A. Chestnut+ R. Jordan+	J. Brooke D. Douglas J. Matheny	I. Easterling M. Ellzey L. Fulton C. Maqueda J. Talbert T. Williams	J. Myers E. Williams	J. Brookter M. Malarcher M. Meade M. Winstead			11	13
School of Education	B. Waddle+	R. Diket*+ J. Hornsby+ C. McShea*+	B. Morris N. Williams	D. Chapman+ K. Juneau J. Lockley N. Metts P. Ward	R. Halford J. Harrison S. Knight E. Owens* J. Roberts L. Steverson	A. Downing D. Herring A. Houston N. Jackson D. Miller L. Mucha# B. Thomas B. Waldrip L. Weaver C. Whitworth	C. Bullock J. Coleman T. English	P. Armstrong P. Gossage L. Harrison J. Landrum P. Yuen	V. Waldrop#		12	24
School of Nursing		M. Cooksey+ K. Mitchell+ J. Williams M. Wirfs		N. James V. Walley	P. Brady	D. Chatham+ G. DeLaune R. Dennis P. Heard J. Mansell M. Nesbitt+ D. Walker		F. Browning J. Commagere M. Dubuisson S. Freeman W. Hand C. Kinsey A. Krebs K. Sicard K. Taylor			1	23
School of Music	P. Cotton* H. Keever+ M. Malone D. Odom E. Winters+	C. Roberts+		K. Vail	E. Owens*	E. Elder	W. Cameron#				7	3
School of Natural & Behavioral Sciences	G. Breland P. Cotton* R. Harris**+ T. King B.J. Martin* T. Rauch+ W. Rivero M. Steele	C. McShea*+	M. Daniels	L. Cummings C. Jones	F. Baugh* G. Futral M. McNatt E. Roark* C. Shepherd	S. Gibson L. Quin* L. Singletary+ J. Smith-Rogers J. Taylor*	D. Owens		O. Burkett K. Caffery A. Knesal A. Ramsey# R. Roberts# P. Williams		15	14
College of Osteopathic Medicine	J. Bailey J. Evans R. Harris**+ J. Jones B.J. Martin* B. Middlebrooks C. Millette J. Porter L. Weir	L. Spriggs	F. Baugh* M. Brooks J. Green# G. Legradi K. Speed J. Valentine	P. Myers	R. Bailey# E. Roark* W. Zaloga	L. Quin* J. Taylor* J. Turner	R. Bateman J. Griffis				20	5
<b>TOTAL</b>	<b>34</b>	<b>11</b>	<b>11</b>	<b>15</b>	<b>22</b>	<b>34</b>	<b>12</b>	<b>20</b>	<b>3</b>	<b>7</b>	<b>82</b>	<b>87</b>

\*Rank in two Schools

+Tenured

#Part-Time

**Totals by Campus**

131 Hattiesburg  
29 Tradition  
9 New Orleans

**169 Total**

**-11 (Minus Rank in Two Schools)**

**158 Total**

**Tenured Statistics**

22 Tenured  
11 Males  
11 Females

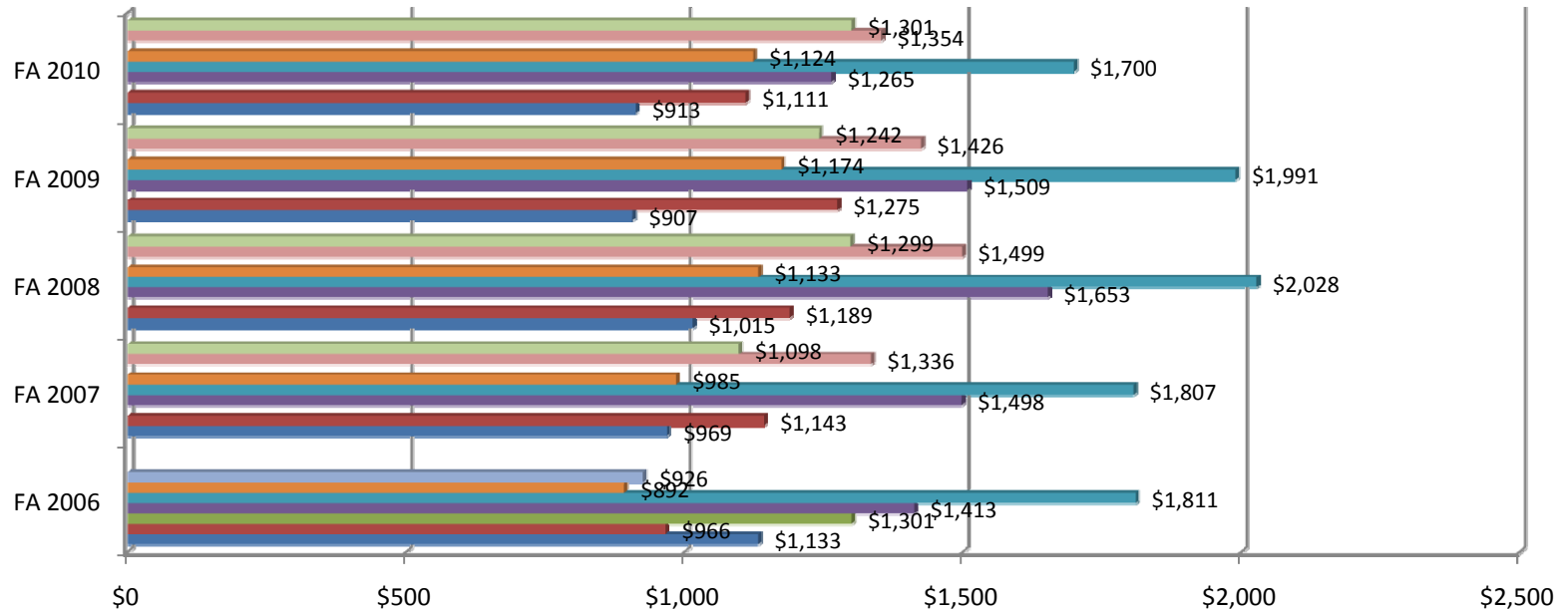
**136 Non-Tenured**

**158 Total**

•Claudia Conklin has faculty status but without rank.

# WILLIAM CAREY UNIVERSITY

## Average Undergraduate Scholarship per Student by School HATTIESBURG CAMPUS

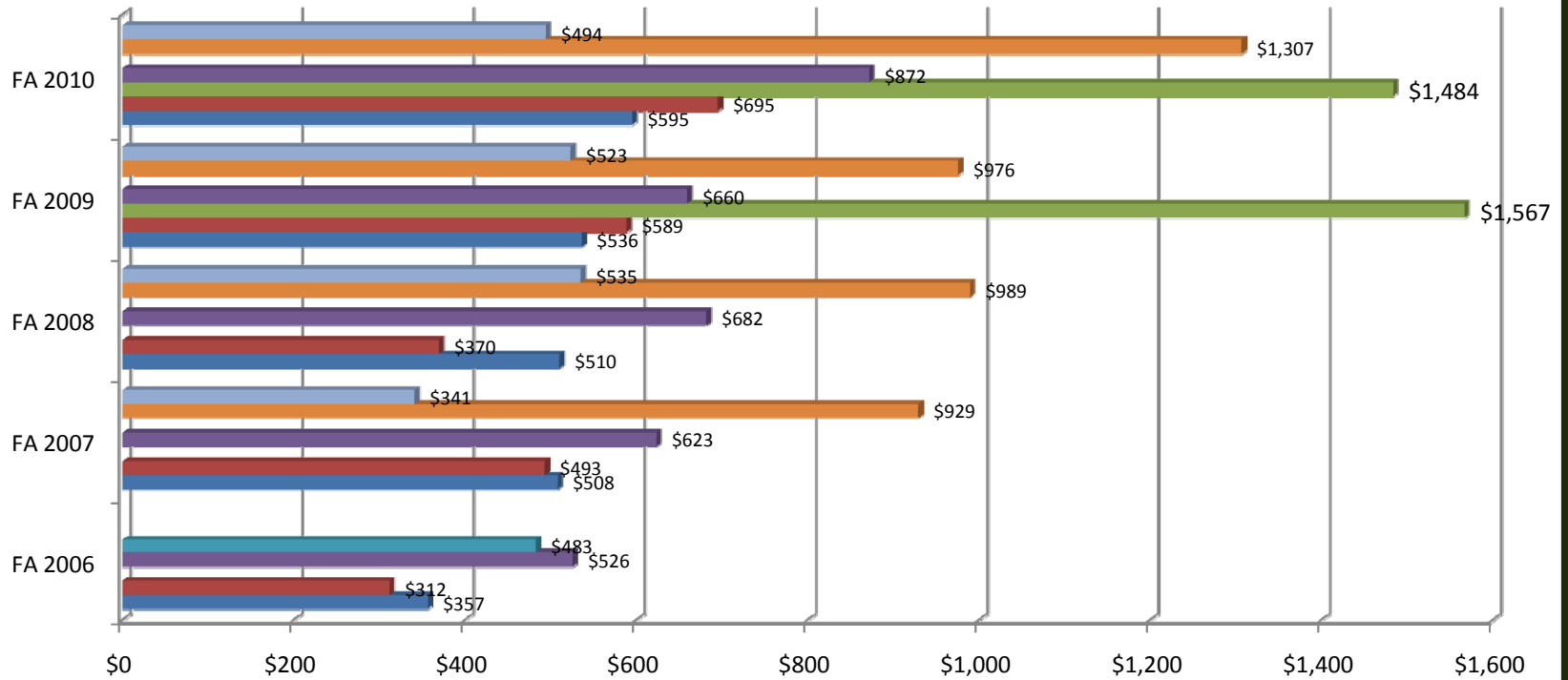


	FA 2006	FA 2007	FA 2008	FA 2009	FA 2010
NAT. & BEHAV. SCI.		\$1,098	\$1,299	\$1,242	\$1,301
ARTS & LETTERS		\$1,336	\$1,499	\$1,426	\$1,354
PSYCHOLOGY	\$926				
EDUCATION	\$892	\$985	\$1,133	\$1,174	\$1,124
MUSIC	\$1,811	\$1,807	\$2,028	\$1,991	\$1,700
MISSIONS	\$1,413	\$1,498	\$1,653	\$1,509	\$1,265
ARTS & SCI.	\$1,301				
BUSINESS	\$966	\$1,143	\$1,189	\$1,275	\$1,111
NURSING	\$1,133	\$969	\$1,015	\$907	\$913



# WILLIAM CAREY UNIVERSITY

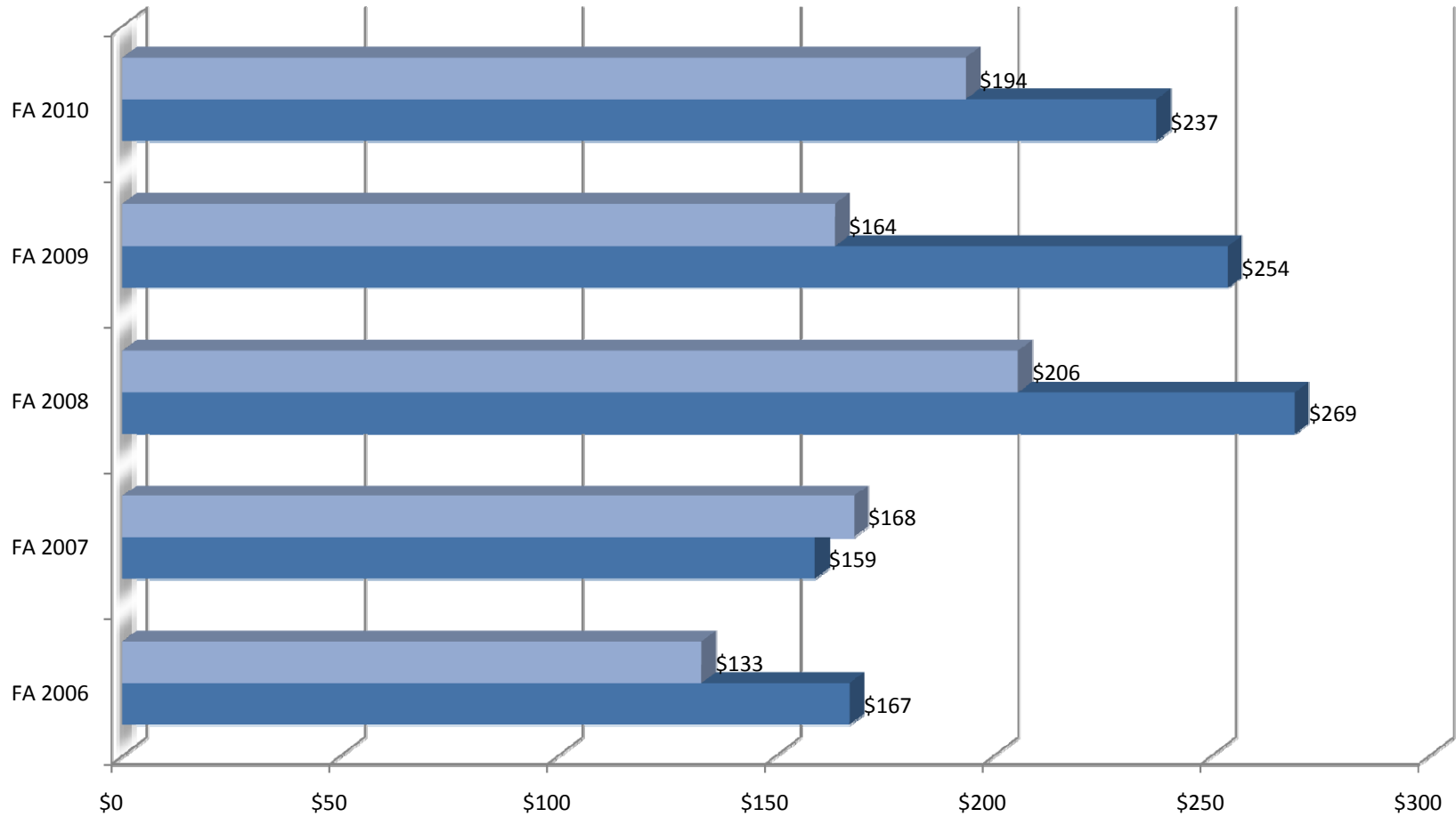
## Average Undergraduate Scholarship per Student by School TRADITION CAMPUS



	FA 2006	FA 2007	FA 2008	FA 2009	FA 2010
NAT. & BEHAV. SCI		\$341	\$535	\$523	\$494
ARTS & LETTERS		\$929	\$989	\$976	\$1,307
PSYCHOLOGY	\$483				
EDUCATION	\$526	\$623	\$682	\$660	\$872
MISSIONS				\$1,567	\$1,484
BUSINESS	\$312	\$493	\$370	\$589	\$695
NURSING	\$357	\$508	\$510	\$536	\$595

# WILLIAM CAREY UNIVERSITY

## Average Undergraduate Scholarship per Student by School NEW ORLEANS CAMPUS



	FA 2006	FA 2007	FA 2008	FA 2009	FA 2010
■ PRE-NURSING	\$133	\$168	\$206	\$164	\$194
■ NURSING	\$167	\$159	\$269	\$254	\$237

**WILLIAM CAREY UNIVERSITY**  
**ATHLETIC SCHOLARSHIP**  
**FALL 2010**

	Graduate-Hattiesburg	Hattiesburg	Total
Baseball Scholarship	0	33	33
	\$0	\$63,519	\$63,519
Mens Basketball Scholarship	0	24	24
	\$0	\$60,202	\$60,202
Mens Cross Country	0	2	2
	\$0	\$6,051	\$6,051
Mens Golf Scholarship	0	8	8
	\$0	\$14,103	\$14,103
Mens Soccer Scholarship	1	33	34
	\$420	\$75,593	\$76,013
Mens Tennis Scholarship	0	17	17
	\$0	\$33,340	\$33,340
Womens Basketball Scholarship	1	12	13
	\$2,999	\$36,526	\$39,525
Womens Cross Country	0	1	1
	\$0	\$1,167	\$1,167
Womens Golf Scholarship	0	5	5
	\$0	\$10,502	\$10,502
Womens Soccer Scholarship	1	29	30
	\$420	\$74,057	\$74,477
Womens Softball Scholarship	0	15	15
	\$0	\$41,106	\$41,106
Womens Tennis Scholarship	0	9	9
	\$0	\$19,776	\$19,776
SCHOLARSHIP	3	188	191
	\$3,839.00	\$435,941.50	\$439,780.50
Total	3	188	191
	\$3,839	\$435,942	\$439,781

07/11/2011

C:\Working 2\Fact Book 2010\Sch Report Athletic FA-10(7112011).rpt

**WILLIAM CAREY UNIVERSITY**  
**ATHLETIC SCHOLARSHIP**  
**WINTER 2010-2011**

	Graduate-Hattiesburg	Hattiesburg	Total
Baseball Scholarship	0	25	25
	\$0	\$58,127	\$58,127
Mens Basketball Scholarship	2	20	22
	\$1,100	\$53,109	\$54,209
Mens Cross Country	0	2	2
	\$0	\$6,050	\$6,050
Mens Golf Scholarship	0	7	7
	\$0	\$11,746	\$11,746
Mens Soccer Scholarship	0	33	33
	\$0	\$76,249	\$76,249
Mens Tennis Scholarship	0	18	18
	\$0	\$35,613	\$35,613
Womens Basketball Scholarship	1	12	13
	\$2,155	\$32,858	\$35,013
Womens Cross Country	0	1	1
	\$0	\$1,167	\$1,167
Womens Golf Scholarship	0	8	8
	\$0	\$13,916	\$13,916
Womens Soccer Scholarship	0	30	30
	\$0	\$71,123	\$71,123
Womens Softball Scholarship	0	16	16
	\$0	\$43,099	\$43,099
Womens Tennis Scholarship	0	8	8
	\$0	\$19,774	\$19,774
SCHOLARSHIP	3	180	183
	\$3,254.70	\$422,830.48	\$426,085.18
Total	3	180	183
	\$3,255	\$422,830	\$426,085

**WILLIAM CAREY UNIVERSITY**  
**ATHLETIC SCHOLARSHIP**  
**SPRING 2011**

	Graduate-Hattiesburg	Hattiesburg	Total
Baseball Scholarship	0	28	28
	\$0	\$59,089	\$59,089
Mens Basketball Scholarship	1	14	15
	\$374	\$44,020	\$44,394
Mens Cross Country	0	1	1
	\$0	\$3,666	\$3,666
Mens Golf Scholarship	0	7	7
	\$0	\$11,746	\$11,746
Mens Soccer Scholarship	0	32	32
	\$0	\$73,591	\$73,591
Mens Tennis Scholarship	0	17	17
	\$0	\$36,688	\$36,688
Womens Basketball Scholarship	0	11	11
	\$0	\$32,034	\$32,034
Womens Cross Country	0	1	1
	\$0	\$1,166	\$1,166
Womens Golf Scholarship	0	7	7
	\$0	\$12,406	\$12,406
Womens Soccer Scholarship	0	27	27
	\$0	\$66,989	\$66,989
Womens Softball Scholarship	0	15	15
	\$0	\$40,762	\$40,762
Womens Tennis Scholarship	0	7	7
	\$0	\$17,775	\$17,775
SCHOLARSHIP	1	167	168
	\$374.14	\$399,931.85	\$400,305.99
Total	1	167	168
	\$374	\$399,932	\$400,306

07/11/2011

C:\Working 2\Fact Book 2010\Sch Report Athletic SP-11(7112011).rpt

**WILLIAM CAREY UNIVERSITY**  
**ATHLETIC SCHOLARSHIP**  
**SUMMER 2011**

	Hattiesburg	Total
<b>Mens Basketball Scholarship</b>	2	2
	<b>\$3,050</b>	<b>\$3,050</b>
<b>Mens Soccer Scholarship</b>	3	3
	<b>\$1,216</b>	<b>\$1,216</b>
<b>Womens Basketball Scholarship</b>	1	1
	<b>\$2,565</b>	<b>\$2,565</b>
<b>Womens Soccer Scholarship</b>	1	1
	<b>\$350</b>	<b>\$350</b>
<b>Womens Softball Scholarship</b>	1	1
	<b>\$750</b>	<b>\$750</b>
SCHOLARSHIP	8	8
	<b>\$7,931.00</b>	<b>\$7,931.00</b>
<b>Total</b>	8	8
	<b>\$7,931</b>	<b>\$7,931</b>

07/11/2011

C:\Working 2\Fact Book 2010\Sch Report Athletic SU-11(7112011).rpt

# WILLIAM CAREY UNIVERSITY

## UNDERGRADUATE STUDENT ENROLLMENT

### BY CAMPUS/BY PROGRAM

		FA-00	FA-01	FA-02	FA-03	FA-04	FA-05	FA-06	FA-07	FA-08	FA-09	FA-10
<b>Hattiesburg</b>	SCHOOL OF ARTS & LETTERS	116	114	125	136	139	142	145	154	162	140	170
	SCHOOL OF BUSINESS	109	119	113	142	161	135	166	174	178	160	185
	SCHOOL OF EDUCATION	260	249	236	268	244	262	299	289	298	303	306
	SCHOOL OF NAT. & BEHAVIORAL SCIENCES	191	161	195	212	210	250	246	271	284	357	382
	SCHOOL OF MISSIONS & BIBLICAL STUDIES	114	92	81	75	73	69	75	72	63	69	75
	SCHOOL OF MUSIC	83	82	71	62	62	60	50	59	53	51	72
	SCHOOL OF NURSING	101	110	92	137	166	255	192	151	148	213	233
	OTHERS	80	60	64	72	57	57	78	105	134	185	245
	Total	1,052	986	976	1,103	1,111	1,230	1,251	1,275	1,320	1,478	1,668
<b>New Orleans</b>	SCHOOL OF NAT. & BEHAVIORAL SCIENCES	0	0	0	0	1	0	1	1	4	0	1
	SCHOOL OF MISSIONS & BIBLICAL STUDIES	0	0	0	0	0	0	0	0	1	0	0
	SCHOOL OF NURSING	171	159	175	225	301	0	138	170	198	243	295
	OTHERS	0	0	0	0	3	0	3	11	7	9	11
	Total	171	159	175	225	305	0	142	182	210	252	307
<b>Tradition</b>	SCHOOL OF ARTS & LETTERS	64	63	67	72	77	22	31	29	23	22	14
	SCHOOL OF BUSINESS	68	60	59	40	40	26	21	31	33	50	71
	SCHOOL OF EDUCATION	53	67	45	44	59	60	62	71	100	100	98
	SCHOOL OF NAT. & BEHAVIORAL SCIENCES	48	30	31	33	33	28	26	21	26	29	37
	SCHOOL OF MISSIONS & BIBLICAL STUDIES	1	1	1	2	0	0	0	0	0	1	2
	SCHOOL OF MUSIC	0	0	0	0	0	0	0	0	0	1	0
	SCHOOL OF NURSING	77	85	86	116	169	122	74	79	96	109	175
	OTHERS	94	99	83	64	28	23	22	18	25	28	17
	Total	403	405	372	371	406	281	236	249	303	340	414
<b>Total</b>	<b>1,626</b>	<b>1,550</b>	<b>1,523</b>	<b>1,699</b>	<b>1,822</b>	<b>1,511</b>	<b>1,629</b>	<b>1,706</b>	<b>1,833</b>	<b>2,070</b>	<b>2,389</b>	

7/11/2011 End of Trimester Numbers

Keesler included in Tradition campus

**WILLIAM CAREY UNIVERSITY**  
**UNDERGRADUATE STUDENT ENROLLMENT**  
**RALPH AND NAOMI NOONKESTER**  
**SCHOOL OF ARTS AND LETTERS**

		FA-05	FA-06	FA-07	FA-08	FA-09	FA-10
<b>Hattiesburg</b>	DEPT OF ART	3	1	3	7	9	14
	DEPT OF HISTORY & SOCIAL SCIENCE	54	50	55	62	52	58
	DEPT OF LANGUAGE & LITERATURE	37	38	37	49	46	48
	DEPT OF THEATRE & COMMUNICATION	48	56	59	44	33	50
	Total	142	145	154	162	140	170
<b>Keesler</b>	DEPT OF ART	1	2	1	1	0	0
	DEPT OF HISTORY & SOCIAL SCIENCE	0	0	2	0	1	0
	Total	1	2	3	1	1	0
<b>Tradition</b>	DEPT OF ART	18	27	22	18	19	11
	DEPT OF HISTORY & SOCIAL SCIENCE	1	1	1	2	1	3
	DEPT OF LANGUAGE & LITERATURE	2	1	2	2	1	0
	DEPT OF THEATRE & COMMUNICATION	0	0	1	0	0	0
	Total	21	29	26	22	21	14
<b>Total</b>		<b>164</b>	<b>176</b>	<b>183</b>	<b>185</b>	<b>162</b>	<b>184</b>

7/11/2011 End of Trimester Numbers



**WILLIAM CAREY UNIVERSITY**  
**UNDERGRADUATE STUDENT ENROLLMENT**  
**DEPARTMENT OF ART**

			FA-05	FA-06	FA-07	FA-08	FA-09	FA-10	
<b>Hattiesburg</b>	<b>Art</b>	<b>Graphic Design</b>	0	1	0	0	0	0	
		<b>Non-Art Minor</b>	2	0	0	0	0	7	
		<b>Total</b>	<b>2</b>	<b>1</b>	<b>0</b>	<b>0</b>	<b>0</b>	<b>7</b>	
	<b>Art-BA</b>	<b>Graphic Design</b>	0	0	0	0	1	1	
		<b>Non-Art Minor</b>	1	0	2	5	6	6	
		<b>Total</b>	<b>1</b>	<b>0</b>	<b>2</b>	<b>5</b>	<b>7</b>	<b>7</b>	
	<b>Art-BFA</b>	<b>Non-Art Minor</b>	0	0	1	2	2	0	
		<b>Total</b>	<b>0</b>	<b>0</b>	<b>1</b>	<b>2</b>	<b>2</b>	<b>0</b>	
		<b>Total</b>	<b>3</b>	<b>1</b>	<b>3</b>	<b>7</b>	<b>9</b>	<b>14</b>	
	<b>Tradition</b>	<b>Art</b>	<b>Ceramics</b>	2	2	1	1	1	0
<b>Graphic Design</b>			3	10	9	3	1	2	
<b>Painting</b>			3	2	2	2	0	0	
<b>Sculpture</b>			3	6	2	0	0	0	
<b>Non-Art Minor</b>			3	1	0	0	2	3	
<b>Total</b>		<b>14</b>	<b>21</b>	<b>14</b>	<b>6</b>	<b>4</b>	<b>5</b>		
<b>Art-BA</b>		<b>Graphic Design</b>	0	0	2	4	2	1	
		<b>Painting</b>	0	0	0	1	1	0	
		<b>Art</b>	0	0	0	0	1	1	
<b>Art-BFA</b>		<b>Non-Art Minor</b>	0	1	1	4	4	1	
		<b>Total</b>	<b>0</b>	<b>1</b>	<b>3</b>	<b>9</b>	<b>8</b>	<b>3</b>	
		<b>Ceramics</b>	0	2	1	0	0	0	
		<b>Graphic Design</b>	3	3	3	1	2	1	
		<b>Painting</b>	0	0	0	1	2	2	
		<b>Art Education</b>	0	1	0	0	0	0	
		<b>Non-Art Minor</b>	2	1	2	2	3	0	
		<b>Total</b>	<b>5</b>	<b>7</b>	<b>6</b>	<b>4</b>	<b>7</b>	<b>3</b>	
<b>Total</b>		<b>19</b>	<b>29</b>	<b>23</b>	<b>19</b>	<b>19</b>	<b>11</b>		
<b>Total</b>			<b>22</b>	<b>30</b>	<b>26</b>	<b>26</b>	<b>28</b>	<b>25</b>	

**WILLIAM CAREY UNIVERSITY**  
**UNDERGRADUATE STUDENT ENROLLMENT**  
**DEPARTMENT OF HISTORY AND SOCIAL SCIENCE**

		FA-05	FA-06	FA-07	FA-08	FA-09	FA-10
<b>Hattiesburg</b>	<b>History</b>	32	26	31	29	23	27
	<b>Social Science</b>	22	24	24	33	29	31
	Total	54	50	55	62	52	58
<b>Keesler</b>	<b>History</b>	0	0	1	0	0	0
	<b>Social Science</b>	0	0	1	0	1	0
	Total	0	0	2	0	1	0
<b>Tradition</b>	<b>History</b>	0	1	0	0	1	2
	<b>Social Science</b>	1	0	1	2	0	1
	Total	1	1	1	2	1	3
<b>Total</b>		<b>55</b>	<b>51</b>	<b>58</b>	<b>64</b>	<b>54</b>	<b>61</b>

7/11/2011 End of Trimester Numbers

**WILLIAM CAREY UNIVERSITY**  
**UNDERGRADUATE STUDENT ENROLLMENT**  
**DEPARTMENT OF LANGUAGE AND LITERATURE**

<b>ENGLISH</b>	<b>FA-05</b>	<b>FA-06</b>	<b>FA-07</b>	<b>FA-08</b>	<b>FA-09</b>	<b>FA-10</b>
<b>Hattiesburg</b>	<b>37</b>	<b>38</b>	<b>37</b>	<b>49</b>	<b>46</b>	<b>48</b>
<b>Tradition</b>	<b>2</b>	<b>1</b>	<b>2</b>	<b>2</b>	<b>1</b>	<b>0</b>
<b>Total</b>	<b>39</b>	<b>39</b>	<b>39</b>	<b>51</b>	<b>47</b>	<b>48</b>

7/11/2011 End of Trimester Numbers

**WILLIAM CAREY UNIVERSITY**  
**UNDERGRADUATE STUDENT ENROLLMENT**  
**DEPARTMENT OF THEATRE AND COMMUNICATION**

		FA-05	FA-06	FA-07	FA-08	FA-09	FA-10
<b>Hattiesburg</b>	<b>Communication</b>	1	0	0	0	0	0
	<b>Journalism</b>	7	7	2	0	0	0
	<b>Mass Communication</b>	2	19	22	19	13	16
	<b>Public Relations</b>	1	0	0	0	0	0
	<b>Speech Communication</b>	16	10	16	9	6	7
	<b>Speech Communication and Theatre</b>	5	5	3	1	1	4
	<b>Theatre</b>	16	15	16	15	13	23
	<b>Total</b>	<b>48</b>	<b>56</b>	<b>59</b>	<b>44</b>	<b>33</b>	<b>50</b>
<b>Total</b>		<b>48</b>	<b>56</b>	<b>59</b>	<b>44</b>	<b>33</b>	<b>50</b>

7/11/2011 End of Trimester Numbers

**WILLIAM CAREY UNIVERSITY**  
**UNDERGRADUATE STUDENT ENROLLMENT**  
**SCHOOL OF BUSINESS**

		FA-05	FA-06	FA-07	FA-08	FA-09	FA-10
<b>Hattiesburg</b>	<b>Accounting</b>	21	21	27	26	26	28
	<b>Computer Information Systems</b>	12	8	12	15	11	20
	<b>Finance</b>	10	15	24	28	20	18
	<b>General Studies</b>	8	21	13	7	3	8
	<b>Management/Marketing</b>	64	89	94	101	94	103
	<b>Workforce Training &amp; Mgnt</b>	1	0	0	0	0	0
	<b>Non Business Minor/Concentration</b>	19	11	4	1	6	8
	<b>Total</b>	135	165	174	178	160	185
<b>Keesler</b>	<b>Accounting</b>	1	0	0	0	0	0
	<b>Computer Information Systems</b>	2	0	0	0	0	0
	<b>Finance</b>	1	0	0	0	0	0
	<b>General Studies</b>	1	1	0	1	0	5
	<b>Management/Marketing</b>	1	3	3	3	5	4
	<b>Workforce Training &amp; Mgnt</b>	0	2	1	0	1	2
	<b>Non Business Minor/Concentration</b>	2	1	2	0	0	0
	<b>Total</b>	8	7	6	4	6	11
<b>Tradition</b>	<b>Accounting</b>	3	1	1	0	4	9
	<b>Computer Information Systems</b>	1	2	0	0	0	3
	<b>Finance</b>	1	1	0	0	2	4
	<b>General Studies</b>	0	0	0	1	1	4
	<b>Management/Marketing</b>	6	6	21	26	31	28
	<b>Workforce Training &amp; Mgnt</b>	6	1	2	1	6	12
	<b>Non Business Minor/Concentration</b>	1	3	1	1	0	0
	<b>Total</b>	18	14	25	29	44	60
<b>Total</b>		161	186	205	211	210	256

**WILLIAM CAREY UNIVERSITY**  
**UNDERGRADUATE STUDENT ENROLLMENT**  
**SCHOOL OF EDUCATION**

		FA-05	FA-06	FA-07	FA-08	FA-09	FA-10
<b>Hattiesburg</b>	DEPT OF EDUCATION	212	237	229	238	233	232
	DEPT OF HEALTH, PE, RECREATION & COACHING	50	62	59	60	70	74
	Total	262	299	288	298	303	306
<b>Keesler</b>	DEPT OF EDUCATION	1	3	4	1	6	5
	Total	1	3	4	1	6	5
<b>Tradition</b>	DEPT OF EDUCATION	32	58	67	98	93	93
	DEPT OF HEALTH, PE, RECREATION & COACHING	1	0	0	0	1	0
	Total	33	58	67	98	94	93
<b>Total</b>		<b>296</b>	<b>360</b>	<b>359</b>	<b>397</b>	<b>403</b>	<b>404</b>

7/11/2011 End of Trimester Numbers

**WILLIAM CAREY UNIVERSITY**  
**UNDERGRADUATE STUDENT ENROLLMENT**  
**DEPARTMENT OF EDUCATION**

		FA-05	FA-06	FA-07	FA-08	FA-09	FA-10
<b>Hattiesburg</b>	Career and Technical Education	0	0	0	0	0	1
	Elementary Education	212	237	229	238	233	231
	Total	212	237	229	238	233	232
<b>Keesler</b>	Career and Technical Education	0	0	0	0	0	2
	Elementary Education	1	3	4	1	6	3
	Total	1	3	4	1	6	5
<b>Tradition</b>	Career and Technical Education	0	0	0	0	0	2
	Elementary Education	32	58	67	98	93	91
	Total	32	58	67	98	93	93
<b>Total</b>		<b>245</b>	<b>298</b>	<b>300</b>	<b>337</b>	<b>332</b>	<b>330</b>

7/11/2011 End of Trimester Numbers

**WILLIAM CAREY UNIVERSITY**  
**UNDERGRADUATE STUDENT ENROLLMENT**  
**DEPARTMENT OF HEALTH, PHYSICAL EDUCATION, RECREATION, AND COACHING**

		FA-05	FA-06	FA-07	FA-08	FA-09	FA-10
<b>Hattiesburg</b>	<b>Health, Physical Education, and Recreation</b>	4	25	38	45	57	57
	<b>Physical Education</b>	46	37	21	15	13	17
	<b>Total</b>	50	62	59	60	70	74
<b>Tradition</b>	<b>Health, Physical Education, and Recreation</b>	0	0	0	0	1	0
	<b>Physical Education</b>	1	0	0	0	0	0
	<b>Total</b>	1	0	0	0	1	0
<b>Total</b>		51	62	59	60	71	74

7/11/2011 End of Trimester Numbers



**WILLIAM CAREY UNIVERSITY**  
**UNDERGRADUATE STUDENT ENROLLMENT**  
**SCHOOL OF NATURAL AND BEHAVIORAL SCIENCES**

		FA-05	FA-06	FA-07	FA-08	FA-09	FA-10
<b>Hattiesburg</b>	DEPT OF BIOLOGICAL SCIENCES	84	91	95	84	92	118
	DEPT OF CHEMISTRY & PHY SCIENCES	7	6	5	5	10	10
	DEPT OF MATHEMATICS	25	23	16	16	25	40
	DEPT OF PSYCHOLOGY	134	126	155	179	230	214
	Total	250	246	271	284	357	382
<b>Keesler</b>	DEPT OF MATHEMATICS	0	1	1	0	0	0
	DEPT OF PSYCHOLOGY	5	4	3	3	3	1
	Total	5	5	4	3	3	1
<b>Tradition</b>	DEPT OF BIOLOGICAL SCIENCES	3	0	1	3	4	4
	DEPT OF MATHEMATICS	0	0	0	0	1	0
	DEPT OF PSYCHOLOGY	20	21	16	20	21	32
	Total	23	21	17	23	26	36
<b>Total</b>		<b>278</b>	<b>272</b>	<b>292</b>	<b>310</b>	<b>386</b>	<b>419</b>

7/11/2011 End of Trimester Numbers

**WILLIAM CAREY UNIVERSITY**  
**UNDERGRADUATE STUDENT ENROLLMENT**  
**DEPARTMENT OF BIOLOGICAL SCIENCES**

		FA-05	FA-06	FA-07	FA-08	FA-09	FA-10
<b>Hattiesburg</b>	<b>Biology</b>	79	83	87	77	80	107
	<b>Health Related Professions</b>	5	8	8	7	12	11
	<b>Total</b>	<b>84</b>	<b>91</b>	<b>95</b>	<b>84</b>	<b>92</b>	<b>118</b>
<b>Tradition</b>	<b>Biology</b>	2	0	1	2	4	2
	<b>Health Related Professions</b>	1	0	0	1	0	2
	<b>Total</b>	<b>3</b>	<b>0</b>	<b>1</b>	<b>3</b>	<b>4</b>	<b>4</b>
<b>Total</b>		<b>87</b>	<b>91</b>	<b>96</b>	<b>87</b>	<b>96</b>	<b>122</b>

7/11/2011 End of Trimester Numbers

**WILLIAM CAREY UNIVERSITY**  
**UNDERGRADUATE STUDENT ENROLLMENT**  
**DEPARTMENT OF CHEMISTRY AND THE PHYSICAL SCIENCES**

<b>CHEMISTRY</b>	<b>FA-05</b>	<b>FA-06</b>	<b>FA-07</b>	<b>FA-08</b>	<b>FA-09</b>	<b>FA-10</b>
<b>Hattiesburg</b>	7	6	5	5	10	10
<b>Total</b>	7	6	5	5	10	10

7/11/2011 End of Trimester Numbers

**WILLIAM CAREY UNIVERSITY**  
**UNDERGRADUATE STUDENT ENROLLMENT**  
**DEPARTMENT OF MATHEMATICS**

<b>MATHEMATICS</b>	<b>FA-05</b>	<b>FA-06</b>	<b>FA-07</b>	<b>FA-08</b>	<b>FA-09</b>	<b>FA-10</b>
<b>Hattiesburg</b>	25	23	16	16	25	40
<b>Keesler</b>	0	1	1	0	0	0
<b>Tradition</b>	0	0	0	0	1	0
<b>Total</b>	25	24	17	16	26	40

7/11/2011 End of Trimester Numbers

**WILLIAM CAREY UNIVERSITY**  
**UNDERGRADUATE STUDENT ENROLLMENT**  
**DEPARTMENT OF PSYCHOLOGY**

<b>PSYCHOLOGY</b>	<b>FA-05</b>	<b>FA-06</b>	<b>FA-07</b>	<b>FA-08</b>	<b>FA-09</b>	<b>FA-10</b>
<b>Hattiesburg</b>	134	126	155	179	230	214
<b>Keesler</b>	5	4	3	3	3	1
<b>Tradition</b>	20	21	16	20	21	32
<b>Total</b>	<b>159</b>	<b>151</b>	<b>174</b>	<b>202</b>	<b>254</b>	<b>247</b>

7/11/2011 End of Trimester Numbers

**WILLIAM CAREY UNIVERSITY**  
**UNDERGRADUATE STUDENT ENROLLMENT**  
**OWEN & ELIZABETH COOPER SCHOOL OF MISSIONS & BIBLICAL STUDIES**

<b>RELIGION</b>	<b>FA-05</b>	<b>FA-06</b>	<b>FA-07</b>	<b>FA-08</b>	<b>FA-09</b>	<b>FA-10</b>
<b>Hattiesburg</b>	69	75	72	63	69	75
<b>Tradition</b>	0	0	0	0	1	2
<b>Total</b>	69	75	72	63	70	77

7/11/2011 End of Trimester Numbers

**WILLIAM CAREY UNIVERSITY**  
**UNDERGRADUATE STUDENT ENROLLMENT**  
**DONALD & FRANCIS WINTERS SCHOOL OF MUSIC**

		FA-05	FA-06	FA-07	FA-08	FA-09	FA-10
<b>Hattiesburg</b>	<b>Church Music</b>	4	4	5	5	4	9
	<b>Guitar Performance</b>	5	3	0	0	0	0
	<b>Music</b>	4	1	0	0	0	0
	<b>Music Education</b>	15	16	19	19	19	23
	<b>Music Therapy</b>	15	14	14	15	15	21
	<b>Music-BA</b>	6	5	4	1	3	7
	<b>Music-Performance</b>	6	5	16	13	10	12
	<b>Organ Performance</b>	1	0	0	0	0	0
	<b>Piano Performance</b>	1	1	0	0	0	0
	<b>Vocal Performance</b>	3	1	1	0	0	0
	<b>Total</b>	<b>60</b>	<b>50</b>	<b>59</b>	<b>53</b>	<b>51</b>	<b>72</b>
<b>Total</b>		<b>60</b>	<b>50</b>	<b>59</b>	<b>53</b>	<b>51</b>	<b>72</b>

7/11/2011 End of Trimester Numbers

**WILLIAM CAREY UNIVERSITY**  
**UNDERGRADUATE STUDENT ENROLLMENT**  
**JOSEPH & NANCY FAIL SCHOOL OF NURSING**

<b>NURSING</b>	<b>FA-05</b>	<b>FA-06</b>	<b>FA-07</b>	<b>FA-08</b>	<b>FA-09</b>	<b>FA-10</b>
<b>Hattiesburg</b>	255	192	151	148	213	233
<b>Keesler AFB</b>	8	8	8	9	11	14
<b>Tradition</b>	114	66	71	87	98	161
<b>Total</b>	<b>377</b>	<b>266</b>	<b>230</b>	<b>244</b>	<b>322</b>	<b>408</b>

7/11/2011 End of Trimester Numbers



# WILLIAM CAREY UNIVERSITY

## GRADUATE STUDENT ENROLLMENT BY CAMPUS/BY PROGRAM

		FA-00	FA-01	FA-02	FA-03	FA-04	FA-05	FA-06	FA-07	FA-08	FA-09	FA-10
<b>Graduate-Hattiesburg</b>	<b>MM</b>	0	0	0	0	0	0	0	0	12	12	6
	<b>MA-ENG</b>	0	0	0	0	0	1	0	0	0	0	7
	<b>MBS</b>	0	0	0	0	0	0	0	0	0	18	9
	<b>MSN</b>	0	0	0	0	0	1	0	0	17	45	35
	<b>MBA</b>	69	48	44	49	59	44	45	46	50	41	39
	<b>MS-PSY</b>	56	97	88	123	112	130	124	125	129	103	125
	<b>MED/SPED</b>	302	324	317	391	372	386	386	426	522	491	485
	<b>Total</b>	427	469	449	563	543	562	555	597	730	710	706
<b>Graduate-Keesler</b>	<b>MBA</b>	0	0	0	9	13	9	13	6	5	10	9
	<b>MS-PSY</b>	0	0	0	1	0	1	0	0	0	0	1
	<b>MED/SPED</b>	0	0	0	1	0	0	1	1	1	4	3
	<b>Total</b>	0	0	0	11	13	10	14	7	6	14	13
<b>Graduate-Tradition</b>	<b>MSN</b>	0	0	0	28	16	14	17	24	4	0	23
	<b>MBA</b>	83	75	74	81	76	68	62	89	97	108	101
	<b>MS-PSY</b>	30	44	44	49	50	40	32	37	46	44	38
	<b>MED/SPED</b>	138	149	155	181	195	191	175	213	239	268	322
	<b>Total</b>	251	268	273	339	337	313	286	363	386	420	484
<b>Total</b>		678	737	722	913	893	885	855	967	1,122	1,144	1,203

7/11/2011 End of Trimester Numbers

**WILLIAM CAREY UNIVERSITY**  
**GRADUATE STUDENT ENROLLMENT**  
**DONALD & FRANCES WINTERS SCHOOL OF MUSIC**  
**MASTER OF MUSIC IN MUSIC EDUCATION**

<b>MM</b>	<b>FA-08</b>	<b>FA-09</b>	<b>FA-10</b>
<b>Graduate-Hattiesburg</b>	12	12	6
<b>Total</b>	12	12	6

7/11/2011 End of Trimester Numbers

**WILLIAM CAREY UNIVERSITY**  
**GRADUATE STUDENT ENROLLMENT**  
**DEPARTMENT OF LANGUAGE & LITERATURE**  
**MASTER OF ARTS IN ENGLISH**

<b>MA - ENGLISH</b>	<b>FA-10</b>
<b>Graduate-Hattiesburg</b>	7
<b>Total</b>	7

7/11/2011 End of Trimester Numbers

**WILLIAM CAREY UNIVERSITY**  
**GRADUATE STUDENT ENROLLMENT**  
**DEPARTMENT OF BIOLOGICAL SCIENCES**  
**MASTER OF BIOMEDICAL SCIENCE**

<b>MBS</b>	<b>FA-09</b>	<b>FA-10</b>
<b>Graduate-Hattiesburg</b>	18	9
<b>Total</b>	18	9

7/11/2011 End of Trimester Numbers

**WILLIAM CAREY UNIVERSITY**  
**GRADUATE STUDENT ENROLLMENT**  
**JOSEPH & NANCY FAIL SCHOOL OF NURSING**  
**MASTER OF SCIENCE IN NURSING**

<b>MSN</b>	<b>FA-05</b>	<b>FA-06</b>	<b>FA-07</b>	<b>FA-08</b>	<b>FA-09</b>	<b>FA-10</b>
<b>Graduate-Hattiesburg</b>	0	0	0	17	44	35
<b>Graduate-Tradition</b>	14	17	24	4	0	23
<b>Total</b>	14	17	24	21	44	58

7/11/2011 End of Trimester Numbers

**WILLIAM CAREY UNIVERSITY**  
**GRADUATE STUDENT ENROLLMENT**  
**SCHOOL OF BUSINESS**  
**MASTER OF BUSINESS ADMINISTRATION**

<b>MBA</b>	<b>FA-05</b>	<b>FA-06</b>	<b>FA-07</b>	<b>FA-08</b>	<b>FA-09</b>	<b>FA-10</b>
<b>Graduate-Hattiesburg</b>	42	45	46	50	41	39
<b>Graduate-Keesler</b>	9	13	6	5	10	9
<b>Graduate-Tradition</b>	68	62	88	97	108	101
<b>Total</b>	119	120	140	152	159	149

7/11/2011 End of Trimester Numbers

**WILLIAM CAREY UNIVERSITY**  
**MASTER OF SCIENCE IN COUNSELING PSYCHOLOGY**

**Graduate - Hattiesburg Enrollment**

	FA-05	FA-06	FA-07	FA-08	FA-09	FA-10
School Psychometry Add-On Endorsement	15	2	4	2	1	1
School Counseling Add-On Endorsement	21	40	33	31	17	4
Psychology	0	1	1	0	0	0
M.S.-School Psychometry	5	4	2	2	1	1
M.S.-School Counseling	12	12	19	18	19	16
M.S.-Gerontology	5	2	2	2	3	2
M.S.-Counseling Psychology	4	5	10	15	17	23
M.S.-Counseling	7	4	4	2	1	0
M.S.-Christian Counseling	14	14	13	15	10	8
M.S.-Child/Adolescent Therapy	33	35	31	33	27	61
LPC Licensure	14	5	6	9	7	9
<b>Total</b>	<b>130</b>	<b>124</b>	<b>125</b>	<b>129</b>	<b>103</b>	<b>125</b>

7/11/2011 End of Trimester Numbers

**WILLIAM CAREY UNIVERSITY**  
**MASTER OF SCIENCE IN COUNSELING PSYCHOLOGY**

**Graduate - Keesler Enrollment**

	<b>FA-05</b>	<b>FA-10</b>
<b>School Counseling Add-On Endorsement</b>	1	0
<b>M.S.-Organizational Counseling</b>	0	1
<b>Total</b>	1	1

7/11/2011 End of Trimester Numbers



**WILLIAM CAREY UNIVERSITY**  
**MASTER OF SCIENCE IN COUNSELING PSYCHOLOGY**

**Graduate - Tradition Enrollment**

	FA-05	FA-06	FA-07	FA-08	FA-09	FA-10
School Psychometry Add-On Endorsement	6	3	5	8	13	12
School Counseling Add-On Endorsement	6	6	9	8	5	1
Psychology	1	0	0	1	0	0
MS-Organizational Counseling	0	0	0	6	5	3
M.S.-School Psychometry	1	1	0	1	2	2
M.S.-School Counseling	11	5	10	11	6	4
M.S.-Organizational Counseling	0	0	0	0	6	7
M.S.-Industrial/Organization	15	14	8	5	1	0
M.S.-Counseling Psychology	0	0	2	2	4	4
M.S.-Counseling	0	1	0	1	0	1
M.S.-Christian Counseling	0	1	0	0	0	0
M.S.-Child/Adolescent Therapy	0	0	0	0	1	1
LPC Licensure	0	1	3	2	1	3
Counseling Psychology	0	0	0	1	0	0
<b>Total</b>	<b>40</b>	<b>32</b>	<b>37</b>	<b>46</b>	<b>44</b>	<b>38</b>

**WILLIAM CAREY UNIVERSITY**  
**MASTER OF EDUCATION/SPECIALIST IN EDUCATION**  
**Graduate - Hattiesburg Enrollment**

	FA-05	FA-06	FA-07	FA-08	FA-09	FA-10
Social Science Add-On Endorsement	0	0	0	2	1	3
Severe/Profound Disability Add on Endorsement	0	13	0	0	1	0
Reading Add-On Endorsement	1	2	4	4	5	9
Mild/Moderate Disabilities Add-On Endorsement	1	0	0	0	0	0
Mild/Mod. Disabilities Add-On Endorsement	0	1	6	10	10	6
MED-Unknown	1	1	1	15	3	4
MED-Social Sciences	0	0	9	16	13	7
MED-Secondary Education	59	42	45	60	54	43
MED-Reading Add-On Endorsement	0	1	0	0	0	0
MED-Mild/Moderate Disabilities	42	32	24	27	29	24
MED-Mathmatics	0	0	0	0	0	4
MED-Gifted Education	10	14	14	13	16	16
MED-English	24	26	18	29	34	24
MED-Elementary Education	109	106	106	142	118	95
MED-Certification Only	0	1	4	0	0	0
MED-Biology	0	0	2	4	2	12
MED-Art of Teaching(Secondary)	50	73	98	87	104	95
MED-Art of Teaching(Elementary)	78	66	77	95	84	76
Mathematics Add-On Endorsement	0	0	0	0	0	2
Gifted Add-On Endorsement	3	5	11	9	15	9
English Add-On Endorsement	0	0	1	2	2	0
Elementary Education	0	0	0	1	0	0
Education	1	0	0	0	0	0
EDS-Higher ED Administration	0	0	0	0	0	54
EDS-Elementary Education	7	3	5	6	0	2
<b>Total</b>	<b>386</b>	<b>386</b>	<b>425</b>	<b>522</b>	<b>491</b>	<b>485</b>

**WILLIAM CAREY UNIVERSITY**  
**MASTER OF EDUCATION/SPECIALIST IN EDUCATION**

**Graduate - Keesler Enrollment**

	FA-06	FA-07	FA-08	FA-09	FA-10
MED-Secondary Education	0	0	0	0	1
MED-Elementary Education	1	0	0	1	1
MED-Art of Teaching(Secondary)	0	0	1	2	1
MED-Art of Teaching(Elementary)	0	1	0	1	0
<b>Total</b>	<b>1</b>	<b>1</b>	<b>1</b>	<b>4</b>	<b>3</b>

7/11/2011 End of Trimester Numbers

**WILLIAM CAREY UNIVERSITY**  
**STUDENT ENROLLMENT**  
**MASTER OF EDUCATION/SPECIALIST IN EDUCATION**

**Graduate - Tradition Enrollment**

	FA-05	FA-06	FA-07	FA-08	FA-09	FA-10
Reading Add-On Endorsement	0	0	0	1	1	6
Mild/Mod. Disabilities Add-On Endorsement	0	0	0	2	3	3
MED-Unknown	0	1	1	2	1	2
MED-Social Sciences	0	0	0	0	1	1
MED-Secondary Education	25	25	32	38	37	46
MED-Mild/Moderate Disabilities	5	6	9	8	11	8
MED-Mathmatics	0	0	0	0	0	2
MED-Gifted Education	4	7	1	3	7	9
MED-English	2	2	4	3	6	9
MED-Elementary Education	46	54	62	53	60	83
MED-Certification Only	0	0	0	1	0	0
MED-Career and Technical Education	0	0	0	0	0	3
MED-Biology	0	0	0	0	0	1
MED-Art of Teaching(Secondary)	28	41	59	55	75	70
MED-Art of Teaching(Elementary)	34	37	41	64	61	54
MED-Art Education	0	0	1	0	3	4
Gifted Add-On Endorsement	1	0	1	4	2	4
English Add-On Endorsement	0	0	0	0	0	3
Education	46	2	0	5	0	1
EDS-Higher ED Administration	0	0	0	0	0	11
EDS-Elementary Education	0	0	2	0	0	2
<b>Total</b>	<b>191</b>	<b>175</b>	<b>213</b>	<b>239</b>	<b>268</b>	<b>322</b>

7/11/2011 End of Trimester Numbers