

**WILLIAM CAREY UNIVERSITY
FACT BOOK 2011**

WILLIAM CAREY UNIVERSITY



HATTIESBURG CAMPUS

498 Tuscan Avenue
Hattiesburg, MS 39401

TRADITION CAMPUS

19640 Highway 67
Biloxi, MS 39532

NEW ORLEANS CAMPUS

3939 Gentilly Blvd., Box 308
New Orleans, LA 70126

WILLIAM CAREY UNIVERSITY

INTRODUCTION & ACKNOWLEDGEMENTS

The entire program of William Carey University is built around the individual student. The University seeks to enhance intellectual and spiritual values and to create a sense of social obligation. The primary aims of faculty and staff are to provide for each student effective instruction, proper example, judicious counsel, and loving concern. In striving to reach these objectives, William Carey University seeks to have each individual within the University community--students, faculty, and administrators--attain his/her highest potential.

The Office of Institutional Research developed this document consistent with the Statement of Purpose . This Fact Book has been organized with the student as the primary focus of attention. This book also includes information relating to financial indicators and faculty.

Information used in the development of this document was derived from numerous sources. Data sources include the following: Office of Academic Affairs, Office of Enrollment Management, Office of Admissions, Financial Aid Office, and the Library/Learning Resource Center.

WILLIAM CAREY UNIVERSITY

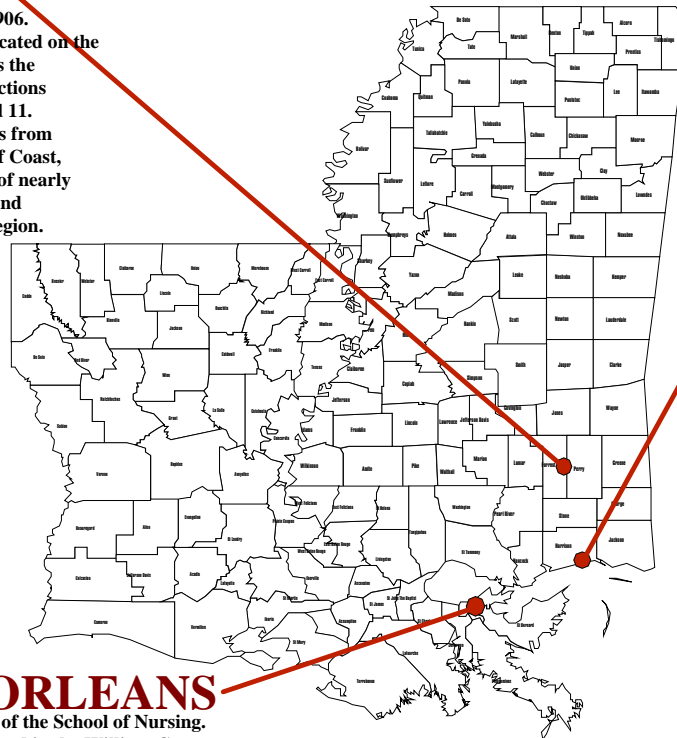
MISSION STATEMENT

As a Christian university which embraces its Baptist heritage and namesake, William Carey University provides quality educational programs, within a caring Christian academic community, which challenge the individual student to excel in scholarship, leadership, and service in a diverse global society.

WILLIAM CAREY UNIVERSITY LOCATIONS

HATTIESBURG

is the home of the main campus, founded in 1906. On 120 acres, the university is conveniently located on the south side of the city. Hattiesburg is known as the "Hub City" because it is located at the intersections to Interstate 59 and U.S. Highways 49, 98, and 11. The city is centrally located less than 100 miles from the state capital of Jackson, as well as the Gulf Coast, New Orleans, and Mobile. With a population of nearly 50,000, Hattiesburg is the educational, retail and medical center for the southeast Mississippi region.



TRADITION

William Carey University on the Coast was relocated to the Tradition Development on Highway 67 in Harrison County during the summer of 2009. The new campus, known as William Carey University--Tradition Campus, is accessible from Highway 49 by taking the Hwy 67 South exit and from Interstate 10 by taking either the Woolmarket exit north or the Lorraine Cowan Road exit north. The campus has two state-of-the-art buildings housing administrative and academic offices and classrooms equipped with the latest technology. The new campus opened for classes in the fall of 2009 with room for expansion as enrollment warrants.

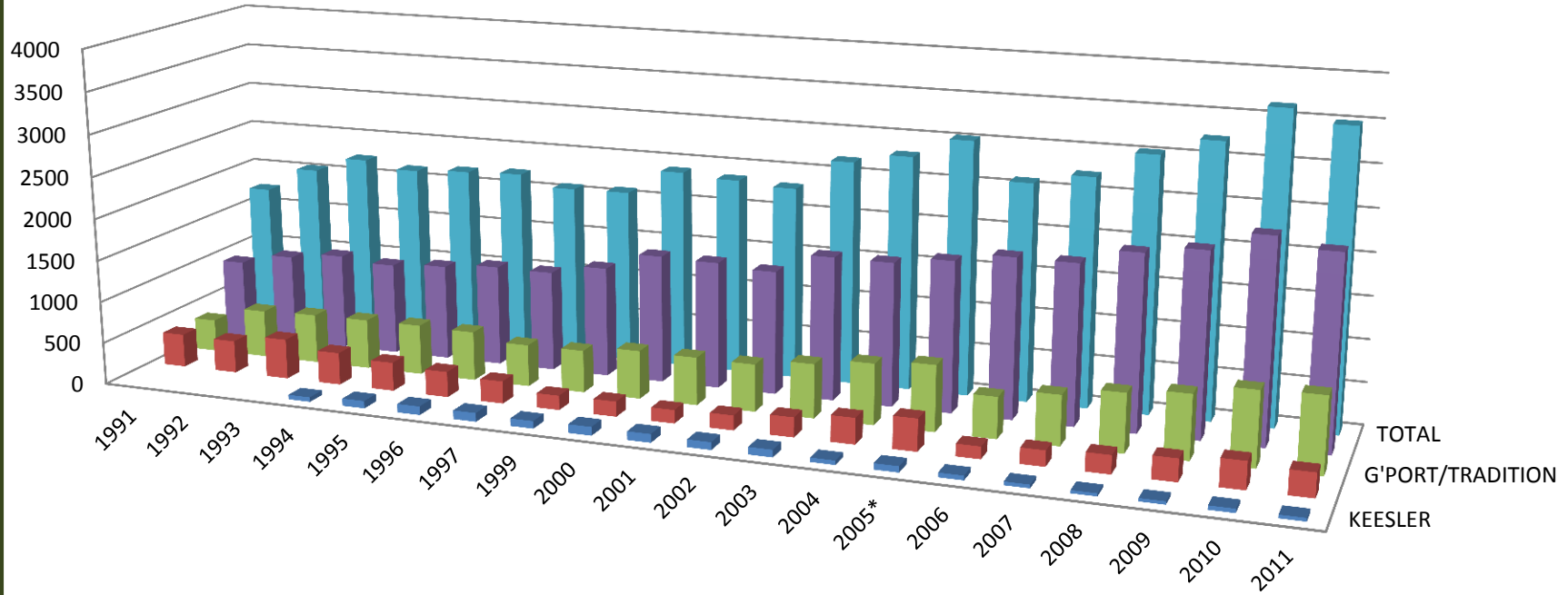
NEW ORLEANS

is one of the sites of the School of Nursing. The school is housed in the William Carey Building on the campus of the New Orleans Baptist Theological Seminary. "America's most unusual city," historic New Orleans offers the student a rich mosaic of culture and tradition.

WILLIAM CAREY UNIVERSITY

ENROLLMENT BY CAMPUS

FALL 1991 - FALL 2011



	1991	1992	1993	1994	1995	1996	1997	1999	2000	2001	2002	2003	2004	2005*	2006	2007	2008	2009	2010	2011
■ KEESLER				55	88	102	104	89	102	101	90	87	50	72	54	42	35	37	48	40
■ NEW ORLEANS	398	387	478	385	341	304	266	172	180	159	176	234	308	381	146	186	218	265	323	284
■ G'PORT/TRADITION	386	570	589	595	599	588	500	505	575	570	563	641	722	781	490	591	692	758	879	898
■ HATTIESBURG	948	1079	1154	1103	1148	1207	1203	1318	1529	1515	1472	1708	1707	1792	1898	1895	2076	2166	2389	2272
■ TOTAL	1732	2036	2221	2138	2176	2201	2073	2084	2386	2345	2301	2670	2787	3026	2588	2714	3021	3226	3639	3494

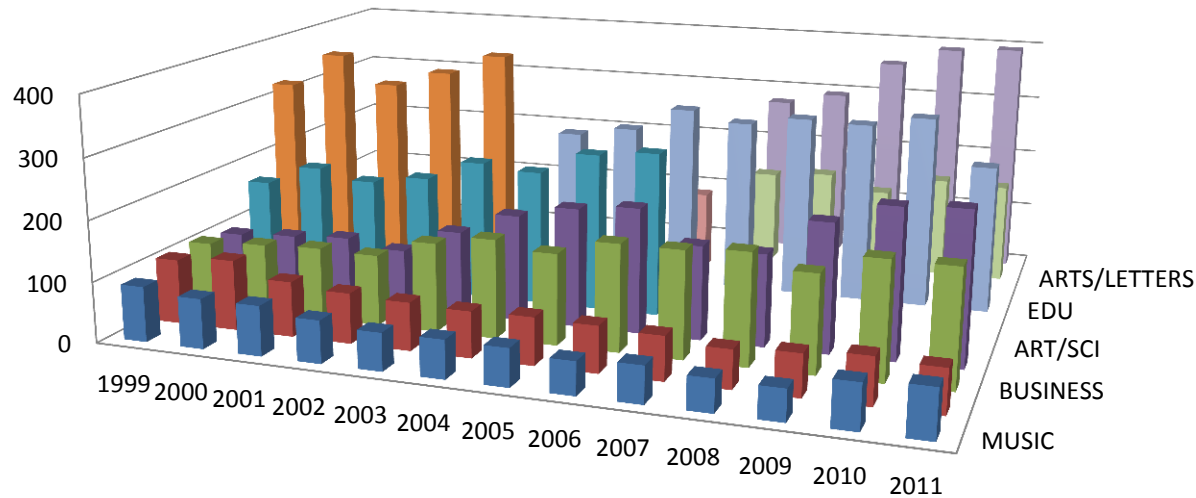
Chart includes graduate & undergraduate students

1998 data NA * 2005 - 8/26/05 Pre-Katrina

WILLIAM CAREY UNIVERSITY

UNDERGRADUATE ENROLLMENT BY SCHOOL

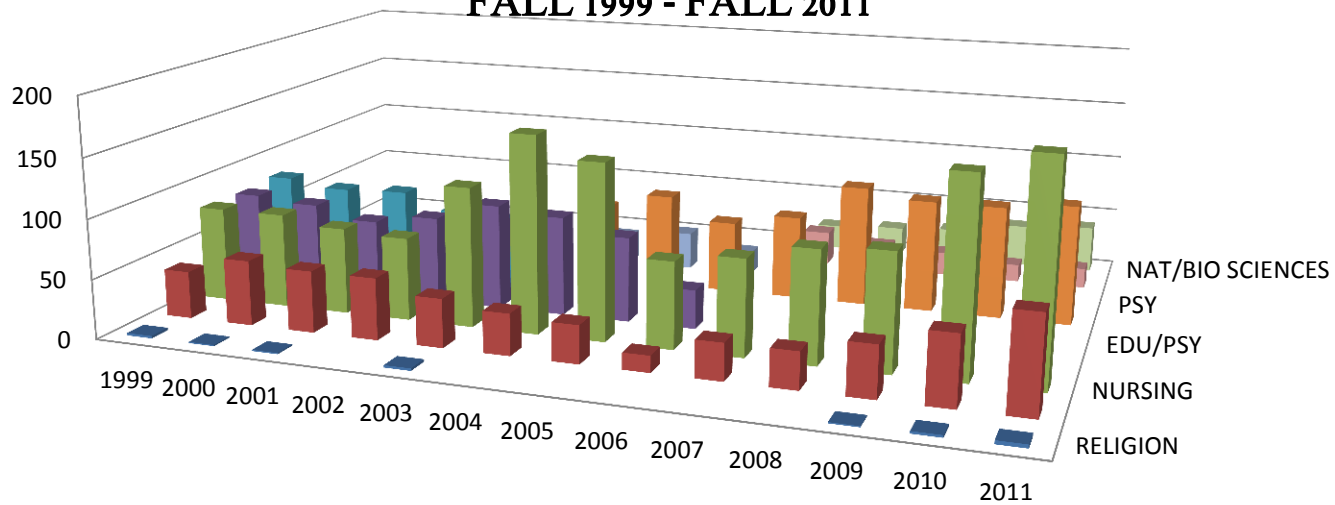
HATTIESBURG - FALL 1999 - FALL 2011



	1999	2000	2001	2002	2003	2004	2005	2006	2007	2008	2009	2010	2011
MUSIC	91	82	82	70	62	63	62	54	60	53	51	73	79
RELIGION	107	116	91	83	79	76	78	76	72	63	69	77	72
BUSINESS	108	115	119	117	147	163	150	176	176	183	160	192	191
NURSING	98	104	110	98	139	176	197	207	155	152	212	246	251
ART/SCI	167	201	185	199	234	226	264	274					
EDU/PSY	326	385	338	365	400								
EDU						251	267	308	291	306	303	321	246
PSY						132	136	134					
ARTS/LETTERS									157	165	140	170	166
NAT/BIO SCIENCES									273	293	357	388	394

School of PSY created 2004/combined with N&BS in 2007
 School of EDU/PSY changed to EDU in 2004
 School of Arts /Letters created in 2007
 School of Natural & Behavioral Science created in 2007

WILLIAM CAREY UNIVERSITY UNDERGRADUATE ENROLLMENT BY SCHOOL GULFPORT/TRADITION FALL 1999 - FALL 2011

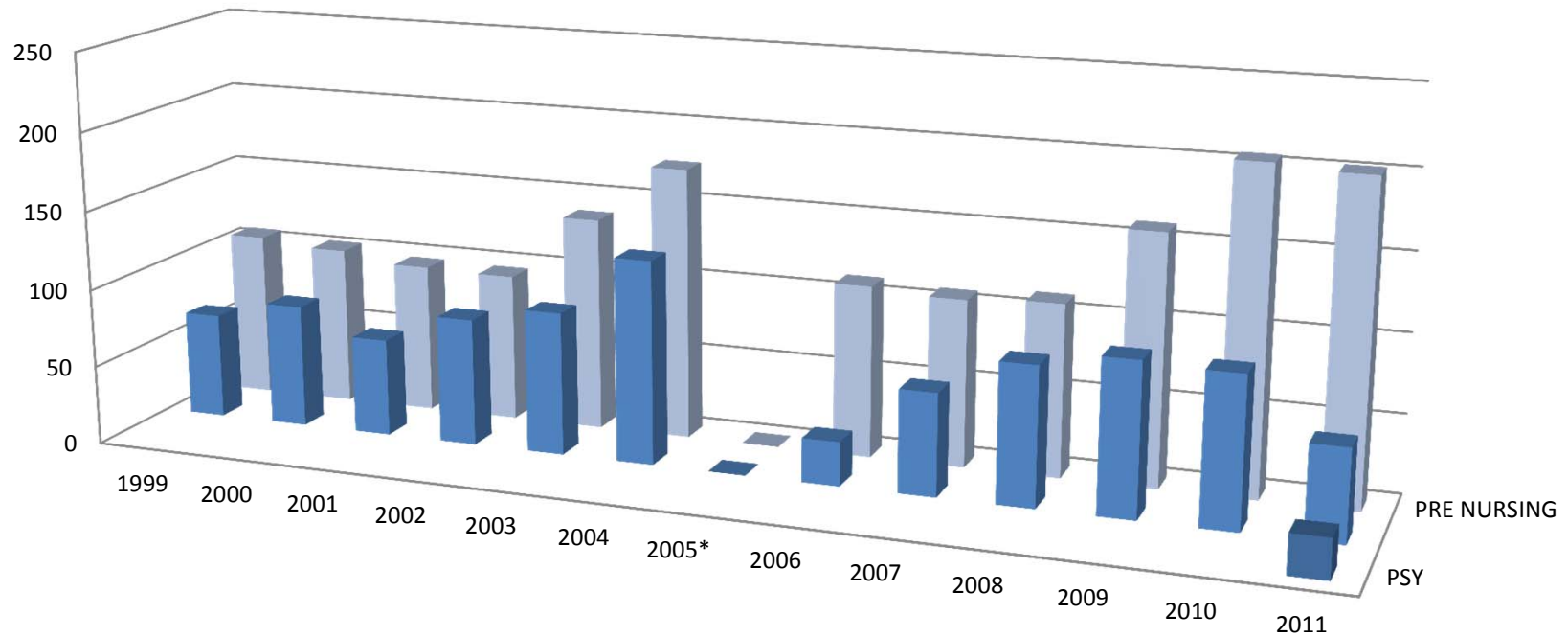


	1999	2000	2001	2002	2003	2004	2005	2006	2007	2008	2009	2010	2011
RELIGION	2	1	1		2						1	2	3
BUSINESS	40	55	52	52	41	35	32	14	31	31	43	58	80
NURSING	80	80	73	70	118	166	148	73	81	94	98	163	181
ART/SCI	79	75	65	73	89	84	72	33					
EDU/PSY	82	76	78	65	62								
EDU						66	80	61	71	102	95	95	101
PSY						25	32	20					
ARTS/LETTERS									29	22	20	15	17
NAT/BIO SCIENCES									21	24	27	36	40

Chart Does Not Include Undecided, General Studies or Graduate Students

School of PSY created 2004/combined with N&BS in 2007
 School of EDU/PSY changed to EDU in 2004
 School of Arts /Letters created in 2007
 School of Natural & Behavioral Science created in 2007

WILLIAM CAREY UNIVERSITY
UNDERGRADUATE ENROLLMENT BY SCHOOL
NEW ORLEANS
FALL 1999-FALL 2011



	1999	2000	2001	2002	2003	2004	2005*	2006	2007	2008	2009	2010	2011
■ PSY													25
■ NURSING	67	79	62	81	91	130	0	28	65	88	97	95	58
■ PRE NURSING	106	102	96	95	137	174	0	110	107	110	159	205	202

CHART DOES NOT INCLUDE UNDEDICED OR GENERAL STUDIES STUDENTS

*8-29-06 Hurricane Katrina

WILLIAM CAREY UNIVERSITY
UNDERGRADUATE ENROLLMENT
 by **CAMPUS/GENDER & ETHNIC CLASSIFICATION**
FALL 2000 - FALL 2011

Hattiesburg														
	American Indian		Asian		Black		Hispanic		International		Other		White	
	Female	Male	Female	Male	Female	Male	Female	Male	Female	Male	Female	Male	Female	Male
2000	2		3		230	81	1	5	5		7	4	470	299
2001	3	1		1	213	70	1	4	7		3	3	430	280
2002	2	2	1		219	68	2	5	5		4	2	415	280
2003	4	2	1		247	71	1	8	11	17	3	1	476	304
2004	4	2	3	2	276	70	2	5	12	20	2	1	470	277
2005	3	4	1	2	260	74	4	8	9	12	4	2	565	279
2006	4	4	4	2	261	68	3	6	18	17	9	3	599	300
2007	2	4	5	3	240	76	4	6	22	25	10	2	567	310
2008	1	1	4	4	251	76	4	6	21	30	10	3	581	341
2009	1	1	1	2	298	80	10	7	31	43	10	6	639	353
2010	1	2	3	1	388	103	15	9	39	64	13	5	617	310
2011	1	2	7	2	392	116	14	10	29	67	9	1	569	304

Tradition														
	American Indian		Asian		Black		Hispanic		International		Other		White	
	Female	Male	Female	Male	Female	Male	Female	Male	Female	Male	Female	Male	Female	Male
2000	2		7	1	78	18	10	5	6	8	3	1	174	116
2001	2		4	1	72	11	5	8	5	12	2	1	183	101
2002	2		2	1	67	15	7	1	9	16	2	2	165	96
2003	2	1	3	1	72	12	12	4		1	5	1	177	85
2004	1		4	3	82	18	11	5			5	1	218	73
2005	1		6	4	90	15	9	5			3	2	233	73
2006			1	1	51	4	4	1		1	3		138	41
2007	1		5	1	61	12	2					1	133	36
2008	1		5	1	74	19	5				1	1	173	36
2009	1		5		75	22	15					2	181	40
2010	1		5	1	99	26	8	1			4	3	217	55
2011	6		8	1	116	16	7				5	2	235	65

New Orleans														
	American Indian		Asian		Black		Hispanic		International		Other		White	
	Female	Male	Female	Male	Female	Male	Female	Male	Female	Male	Female	Male	Female	Male
2000	1	1	2		101	6	10		2	1	1	1	47	7
2001	1		3		91	4	7	2	1	1	2		43	3
2002	2		2		96	3	3		2	1	3		55	9
2003	1		3		140	3	14		1		3	2	56	11
2004	2		5		186	7	15	2	1		2	1	74	13
2005	3		6		221	12	16	2	1		3		105	13
2006	1		1		75	4	6	1			2		49	6
2007	2		3		90	9	9	4			3		56	6
2008	2		2		114	6	9	3			6		66	9
2009			4		140	5	11	4			6	1	72	11
2010	1		4		181	10	14	5			10		84	15
2011			5		179	8	9	2			3	1	66	13

WILLIAM CAREY UNIVERSITY

MEAN STUDENT AGE by CAMPUS/MAJOR

FALL 2000 - FALL 2011

Hattiesburg																	
	ART	BIO	CHE	MAT	LAN/LIT	HIS	COM/TH	BUS	EDU	PSY	PED	REL	MUS	NUR	GEN STU	UND	MEAN
2000		22.4	21.8	23.4	25.2	24.5	21.3	24.4	27.9	25.5	22.5	22.3	22.1	26.6	34.9	19.5	24.5
2001		22.4	22.1	25.1	24	21.7	21.2	23.8	27.7	26.6	22.9	22.7	23.3	27.7	34.4	22.4	25.2
2002		21.6	23.6	24.2	23.1	21.7	21.3	24.5	26.7	28.5	21.3	23.5	21.5	26	33.3	23.2	24.7
2003	22	21.8	23	23.5	23.7	24.8	22.6	23.5	26.1	27.7	21.4	24.7	22.4	25.1	33.5	21.6	24.7
2004	18	21.5	21.2	21.2	23.2	22.5	22	23.4	26.9	26.6	22.9	24.8	22.3	25.5	32.2	20.2	24.5
2005	19.7	22.3	23.9	22.5	24.4	23.3	20.1	23.6	26.3	25.9	23.4	23.4	22.4	24.6	27.5	20.3	24.1
2006	26	23.1	26	24	23	23.9	20.5	24	27	26	23	23.3	23.2	24.8	27	19.8	24.2
2007	18.7	22.3	23	22.6	24.2	24.1	20.9	23.8	26.7	24.8	22.3	24	22.2	23.6	32.2	19.6	23.8
2008	27.1	22.8	18.6	19.6	22.7	23.4	20.9	23.6	26.4	25.7	21.9	25.1	21.5	24.1	32	18.2	23.8
2009	25.1	22.2	21.1	22	24	23.1	26.1	23.4	26.1	26.3	21.6	25.9	21.7	25.5	32	18.8	24
2010	25.4	22.3	20.6	23.2	25.3	24.7	20.5	24.7	26.3	26.9	23.7	27.5	22.2	25.5	27	21	24.8
2011	23.7	20.8	18.4	24.3	23.3	23.8	19.5	23.9	24.6	26.7	23	25.4	21	25.6	27	20	23.8

Tradition																	
	ART	BIO	CHE	MAT	LAN/LIT	HIS	COM/TH	BUS	EDU	PSY	PED	REL	MUS	NUR	GEN STU	UND	MEAN
2000	27.7	24.3		28.5	25	30.2		28.7	29.7	29.3	26	20		28.2	35.8	23.8	27.6
2001	24.6	21.7		20.6	32	32.5		26.9	30.2	28.7	20	21		29.4	35	25.1	29.1
2002	24.6	23.3	21		27.5	25.2		25.7	29.9	28.6	19.4		18	29.5	36.5	22.8	28.7
2003	25.8	24.9	22	28	29	27		26.2	33.7	30	35	40		30.4	37	29.3	30.3
2004	25.9	23.9			24	29.5	20	30.6	30.7	31.8				28.9	36.6		29.4
2005	26.2	22.8		23.5	34.8	31.5		30.7	30.3	28.3	30			29.5	31.6	21.3	29
2006	27.9			28.3	27	24		32.6	30.5	30.1				28.3	37.6	27.3	30.2
2007	28	23		27	26.5	33.7	26	29.2	30.1	30.6				27.8	35.4		29.6
2008	27.6	24.3			27.5	31		32.6	29.9	33.2				30	33.5	18	30.5
2009	28.7	23.5		22	20	40		30.9	29.4	35.3	32	28		30.5	37.1	25.7	31
2010	27.9	29.2				22.5		31.5	29.1	33.4		31		29.8	41.5	38.1	30.7
2011	28.9	25.4		22	26	32		31.6	30.5	35.2	34	33		29.4	42.9	34.8	30.7

New Orleans																	
	ART	BIO	CHE	MAT	LAN/LIT	HIS	COM/TH	BUS	EDU	PSY	PED	REL	MUS	NUR	GEN STU	UND	MEAN
2000														27.1			27.1
2001														27.8			27.8
2002														28.5			28.5
2003														28.3			28.3
2004										25				28.5	38		28.5
2005										24				27.5	33.2	24	27.7
2006										30				26.8	35		26.9
2007										36				26.6	31.6		27
2008		20								31.5		43		27.6	29.7		27.7
2009														27.3	35	24	27.5
2010														27.4	33.3	35	27.7
2011		21								30.7				27.6	25	21	27.8

PRODUCTION OF SCHOOL/DEPARTMENT/AREA

Hattiesburg

	99-00	00-01	01-02	02-03	03-04	04-05	05-06	06-07	07-08	08-09	09-10	10-11	11-12*	Total	
Art	360	432	489	456	480	519	429	508	363	360	585	597	531	6,109	6,109
Biology	1,635	1,557	1,763	1,812	2,220	2,486	2,663	2,786	2,909	2,966	3,464	4,116	3,798	34,175	34,175
Business	2,720	2,942	3,100	2,914	3,590	3,885	3,386	3,938	4,378	4,389	4,560	4,693	4,533	49,028	49,028
Chemistry	816	871	1,028	969	1,043	1,160	1,148	1,258	1,335	1,215	1,625	1,583	1,457	15,508	15,508
Comm./Jour./PR/S	1,427	1,697	1,610	1,788	1,607	1,515	1,556	1,693	1,557	1,521	1,521	1,883	1,664	21,039	21,039
Education	3,598	3,417	3,594	3,393	3,259	3,189	4,284	4,539	4,461	4,332	4,428	4,015	3,062	49,571	49,571
English	3,870	3,984	3,628	3,960	4,627	3,926	4,170	4,491	4,638	4,789	4,716	5,529	4,851	57,179	57,179
English Language	0	0	0	0	0	0	0	0	0	0	0	36	54	90	90
History	1,994	2,349	1,927	2,310	2,679	2,728	2,872	2,862	3,021	3,037	3,381	3,643	3,084	35,887	35,887
MAT	1,241	1,563	1,252	1,393	1,634	1,491	1,617	1,906	1,757	2,107	2,291	2,755	2,214	23,221	23,221
Music	2,504	2,118	2,037	1,839	1,802	1,757	1,873	1,794	1,894	1,653	1,838	2,113	2,307	25,529	25,529
Nursing	1,362	1,049	1,381	1,058	1,535	2,112	3,577	2,578	1,588	1,748	2,712	2,917	2,399	26,016	26,016
Physical Education	2,100	2,297	1,998	2,080	2,418	2,930	2,663	2,912	2,763	2,733	2,845	3,188	2,693	33,620	33,620
Psychology	3,646	4,267	3,723	4,266	5,373	5,045	5,557	5,000	5,443	6,777	7,905	8,731	6,980	72,713	72,713
Religion	3,517	3,796	3,383	3,175	3,853	3,492	3,728	3,748	3,702	3,469	4,031	4,256	3,579	47,729	47,729
Philosophy	223	276	339	318	315	291	306	330	276	336	376	423	207	4,016	4,016
MLS/AOS	11	10	33	25	30	18	12	13	0	7	2	3	5	169	169
HUM/SSS	39	93	45	36	36	39	45	30	21	30	102	123	135	774	774
HON	31	39	23	12	5	6	3	0	0	29	43	65	62	318	318
Total	31,094	32,757	31,353	31,804	36,506	36,589	39,889	40,386	40,106	41,498	46,425	50,669	43,615	502,691.00	502,691.00

End of Trimester

*SP-12

PRODUCTION OF SCHOOL/DEPARTMENT/AREA GULFPORT/TRADITION

	Tradition														
	99-00	00-01	01-02	02-03	03-04	04-05	05-06	06-07	07-08	08-09	09-10	10-11	11-12*	Total	
Art	1,134	1,268	1,093	1,167	1,485	1,479	786	621	585	540	486	375	360	11,379	11,379
Biology	353	386	448	408	627	607	311	279	334	469	469	756	714	6,161	6,161
Business	1,186	1,344	1,601	1,223	1,028	982	576	562	841	974	1,450	1,889	1,750	15,406	15,406
Chemistry	239	322	232	244	215	194	74	128	144	129	169	225	112	2,427	2,427
Comm./Jour./PR/S	108	186	135	189	99	126	27	27	39	75	78	108	111	1,308	1,308
Education	739	783	903	594	717	960	1,235	1,208	1,236	1,800	1,503	1,628	1,430	14,736	14,736
English	717	783	528	531	537	690	407	370	516	501	417	624	564	7,185	7,185
History	384	450	480	369	393	429	270	243	435	414	465	603	534	5,469	5,469
MAT	289	309	306	237	279	369	270	189	210	321	334	450	435	3,998	3,998
Music	36	27	84	74	51	66	90	63	108	84	84	90	84	941	941
Nursing	1,327	973	991	1,082	1,931	2,751	2,040	1,044	1,174	1,443	1,976	2,098	2,076	20,906	20,906
Physical Education	339	235	297	364	345	354	293	300	376	365	270	458	281	4,277	4,277
Psychology	1,235	1,190	1,171	1,169	1,188	1,447	1,230	933	829	923	1,304	1,752	1,309	15,680	15,680
Religion	645	661	654	702	711	924	642	531	507	705	702	1,209	900	9,493	9,493
Philosophy	180	294	177	231	252	246	162	114	111	147	159	270	183	2,526	2,526
HON	41	35	18	0	0	0	0	0	0	0	0	0	0	94	94
Total	8,952	9,246	9,118	8,584	9,858	11,624	8,413	6,612	7,445	8,890	9,866	12,535	10,843	121,986.00	121,986.00

PRODUCTION OF SCHOOL/DEPARTMENT/AREA KEESLER

	Keesler AFB													Total	
	99-00	00-01	01-02	02-03	03-04	04-05	05-06	06-07	07-08	08-09	09-10	10-11	11-12*		
Art	24	15	72	69	51	75	27	54	12	30	21	3	3	456	456
Biology	89	95	82	35	34	73	18	34	23	36	43	19	14	595	595
Business	983	1,195	904	965	780	486	412	342	285	237	232	198	123	7,142	7,142
Chemistry	22	26	26	39	36	33	9	4	3	30	3	3	11	245	245
Comm./Jo	24	21	15	21	12	0	9	6	6	12	9	6	15	156	156
Education	90	141	135	72	24	48	15	45	57	21	45	114	72	879	879
English	72	84	57	81	78	75	27	24	42	30	45	36	36	687	687
History	102	96	87	48	81	27	33	39	51	60	69	21	27	741	741
MAT	37	36	36	12	21	15	12	18	15	21	15	0	18	256	256
Music	0	12	9	12	9	0	9	6	12	6	6	0	6	87	87
Nursing	73	183	150	177	139	189	199	189	117	175	173	286	101	2,151	2,151
Physical	52	30	21	15	24	27	14	23	28	25	27	17	16	319	319
Psychology	427	411	558	405	338	224	226	289	196	190	207	109	94	3,674	3,674
Religion	210	258	285	213	180	117	102	84	78	81	75	81	51	1,815	1,815
Philosophy	21	24	6	39	24	27	18	24	9	21	21	27	15	276	276
MLS/AOS	0	0	20	12	0	0	0	0	0	0	0	0	0	32	32
HON	3	1	0	0	0	0	0	0	0	0	0	0	0	4	4
Total	2,229	2,628	2,463	2,215	1,831	1,416	1,130	1,181	934	975	991	920	602	19,515.00	19,515.00

End of Trimester *SP-12

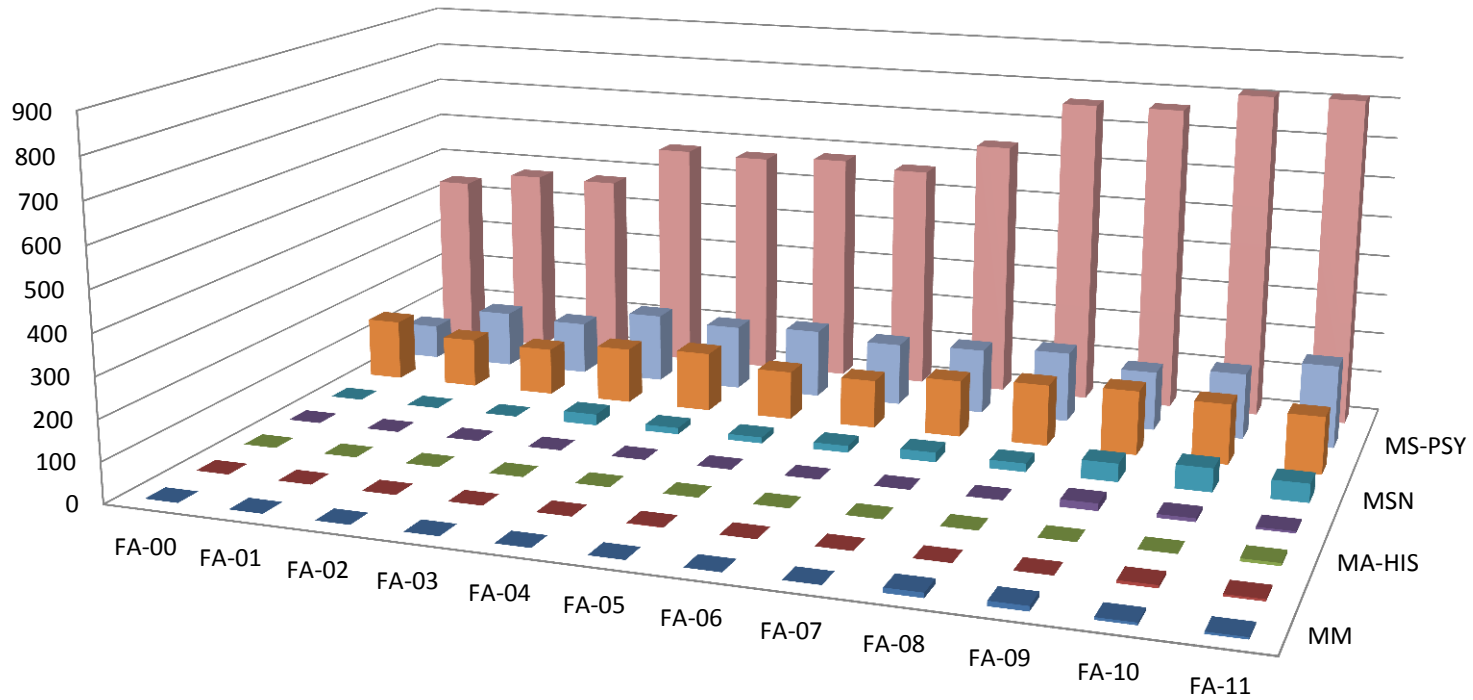
PRODUCTION OF SCHOOL/DEPARTMENT/AREA NEW ORLEANS

New Orleans																
	99-00	00-01	01-02	02-03	03-04	04-05	05-06	06-07	07-08	08-09	09-10	10-11	11-12*	Total		
Art	0	0	0	0	0	0	0	0	0	0	0	0	3	0	3	3
Biology	741	589	559	875	1,144	1,341	412	877	999	914	1,281	1,471	1,051	12,254	12,254	
Business	120	120	48	96	99	48	0	78	6	51	45	39	90	840	840	
Chemistry	316	256	352	324	244	272	136	164	204	276	284	160	240	3,228	3,228	
Comm./Jour./	153	114	129	165	183	243	87	150	150	207	213	285	132	2,211	2,211	
English	231	237	228	309	396	522	153	294	402	366	435	507	276	4,356	4,356	
History	417	210	285	231	489	816	183	527	624	646	807	1,053	495	6,783	6,783	
MAT	219	165	135	81	114	198	36	90	123	129	159	228	144	1,821	1,821	
Music	126	114	90	120	147	180	0	105	102	126	180	270	111	1,671	1,671	
Nursing	2,076	2,321	2,330	2,503	3,003	4,125	0	1,064	1,982	2,541	3,263	3,038	1,590	29,836	29,836	
Physical	248	169	199	238	337	645	144	274	450	428	499	532	398	4,561	4,561	
Psychology	416	304	362	413	886	962	326	616	828	732	1,011	1,453	1,302	9,611	9,611	
Religion	450	399	465	570	834	954	159	447	519	591	906	1,044	537	7,875	7,875	
Philosophy	144	117	177	213	231	261	108	78	96	180	279	291	81	2,256	2,256	
Total	5,657	5,115	5,359	6,138	8,107	10,567	1,744	4,764	6,485	7,187	9,362	10,374	6,447	87,306.00	87,306.00	

WILLIAM CAREY UNIVERSITY

GRADUATE ENROLLMENT STUDENTS/PROGRAM

FALL 2000 - FALL 2011



	FA-00	FA-01	FA-02	FA-03	FA-04	FA-05	FA-06	FA-07	FA-08	FA-09	FA-10	FA-11
MM	0	0	0	0	0	0	0	0	12	12	6	5
MA-ENG	0	0	0	0	0	1	0	0	0	0	7	5
MA-HIS	0	0	0	0	0	0	0	0	0	0	0	7
MBS	0	0	0	0	0	0	0	0	0	18	9	5
MSN	0	0	0	28	16	15	17	24	21	45	58	46
MBA	152	123	118	139	148	121	120	141	152	159	149	141
MS-PSY	86	141	132	173	162	171	156	162	175	147	164	205
MED/SPED	440	473	472	573	567	577	562	640	762	763	810	813

WILLIAM CAREY UNIVERSITY
GRADUATE ENROLLMENT
by CAMPUS/GENDER & ETHNIC CLASSIFICATION
FALL 2000 - FALL 2011

Graduate - Hattiesburg														
	American Indian		Asian		Black		Hispanic		International		Other		White	
	Female	Male	Female	Male	Female	Male	Female	Male	Female	Male	Female	Male	Female	Male
2000	1				99	20		1					216	89
2001		1			109	12	2	2					346	75
2002					94	13	1	2					269	88
2003	2				137	16							319	85
2004	1		2		142	22	1						304	93
2005	1	2	2		155	21	2			1			317	69
2006			1	1	160	19				2			294	95
2007		2			167	23		1					305	99
2008	2	1	2		179	30	2	3	1	2			416	105
2009	3		1	1	180	38	1	1		1			373	108
2010	1	1	7	11	207	45	3	2	1	1	3	2	398	140
2011	1	1	2	2	216	43	4	2	3	2	2		372	97

Graduate-Tradition														
	American Indian		Asian		Black		Hispanic		International		Other		White	
	Female	Male	Female	Male	Female	Male	Female	Male	Female	Male	Female	Male	Female	Male
2000			5	1	31	17	2	3		2			143	45
2001	2		1	1	37	10	3	1	1	2			154	52
2002	2		2	1	42	11	6	1	1	2			133	65
2003	1		3	1	63	18	3	3	1	2			197	47
2004	1		3		56	10	1	2					214	64
2005	3	1	3		75	24	6	2	0	1			228	70
2006	2		1		54	14	5	2					177	48
2007			7		64	15	5	1		1			210	65
2008			4	1	76	26	3	1					247	50
2009	1		2		77	22	5	1					248	76
2010			4		79	26	8				1		298	91
2011	2		1		89	27	4	2	1				255	93

WILLIAM CAREY UNIVERSITY
GRADUATE ENROLLMENT
MEAN STUDENT AGE by CAMPUS/ MAJOR
FALL 2000 - FALL 2011

Graduate-Hattiesburg										
	OMS	MA	MBA	MBS	MS-PSY	MSN	MED & MBA	MED	MM	EDS
2000			32.5		31.7		34.6			
2001			31.1		32.7		34.2			
2002			29.4		32.5		33			
2003			28.3		34.4			33		
2004			30		34			33.8		
2005			29.4		33.5			33.3		
2006			29.8		32.5			32.4		
2007			29.7		32.5			32.1		
2008			30.7		33.5	38.4		33.1	41.1	
2009			30.8	24.8	32.8	38.9		32.8	32.6	
2010	26.2	27.5	28.8	25.4	31.2	38.9		32.8	28.3	36.2
2011		33	28.4	25.8	30.8	38.9		32.3	28	35.8

Graduate-Tradition										
	OMS	MA	MBA	MBS	MS-PSY	MSN	MED & MBA	MED	MM	EDS
2000			32.4		30.2		33.9			
2001			34		31.5		36			
2002			36		32		36			
2003			31.6		36.5	39.4		35.4		
2004			33.3		37.7	38.9		35.4		
2005			36.6		34.9	38.8		34		
2006			35.5		33.4	39.5		33.4		
2007			32.8		34.2	38.6		34.9		
2008			33.9		34.6	39		34.3		
2009			33.3		36.1			33.4		
2010			32.5		36.4	43		43.1		33.5
2011			32.2		34.7	40.1		35.3		33.8

PRODUCTION OF SCHOOL/DEPARTMENT/AREA

Graduate - Hattiesburg

Graduate-Hattiesburg															
	99-00	00-01	01-02	02-03	03-04	04-05	05-06	06-07	07-08	08-09	09-10	10-11	11-12*	Total	
Art	0	3	12	6	0	0	0	12	0	0	3	0	3	39	39
Biology	0	0	0	0	3	0	0	32	132	50	683	467	205	1,572	1,572
Business	1,295	1,540	1,017	1,209	1,017	975	1,140	1,107	1,032	879	891	783	765	13,650	13,650
Chemistry	0	0	0	0	0	0	4	0	8	3	4	0	4	23	23
Comm./Jo	0	0	0	0	0	1	0	0	0	0	0	0	0	1	1
Education	5,577	5,365	5,792	6,480	7,780	7,723	7,151	7,499	8,041	8,380	7,563	8,124	6,206	91,681	91,681
English	333	324	249	315	342	393	321	381	378	417	603	522	243	4,821	4,821
History	63	21	12	33	27	33	24	111	168	201	198	147	159	1,197	1,197
MAT	99	72	63	90	108	66	66	78	117	69	123	190	63	1,204	1,204
Music	0	0	0	0	0	1	0	6	117	345	235	110	63	877	877
Nursing	3	0	0	0	0	0	0	5	0	698	687	673	729	2,795	2,795
Physical	3	0	0	0	0	11	0	0	10	0	0	0	0	24	24
Psychology	912	1,533	2,097	2,115	2,067	2,088	2,283	2,232	2,285	2,577	2,133	2,847	2,581	27,750	27,750
Religion	0	0	0	0	3	0	3	0	3	0	3	0	0	12	12
Philosophy	0	0	0	0	0	0	0	3	0	0	0	0	0	3	3
MLS/AOS	0	0	0	0	3	0	0	0	0	0	0	0	7	10	10
OMS	0	0	0	0	0	0	0	0	0	0	0	7,384	12,412	19,796	19,796
Total	8,285	8,858	9,242	10,248	11,350	11,291	10,992	11,466	12,291	13,619	13,126	21,247	23,440	165,454.70	165,454.70

End of Trimester

*SP-12

PRODUCTION OF SCHOOL/DEPARTMENT/AREA

Graduate - Tradition

	Graduate- Tradition														
	99-00	00-01	01-02	02-03	03-04	04-05	05-06	06-07	07-08	08-09	09-10	10-11	11-12*	Total	
Art	54	45	51	39	21	12	9	12	6	42	21	45	30	387	387
Biology	0	6	0	0	3	0	0	0	0	0	22	15	4	50	50
Business	1,629	1,649	1,809	1,668	2,166	1,785	1,621	1,821	2,340	2,223	2,229	2,229	1,470	24,639	24,639
Education	2,601	2,973	3,095	3,885	4,133	4,137	3,298	3,474	4,335	4,413	5,374	5,371	3,589	50,678	50,678
English	54	63	45	99	93	105	45	45	84	66	120	168	60	1,047	1,047
History	33	3	0	3	12	3	0	9	15	3	3	0	0	84	84
MAT	9	15	15	9	12	12	6	18	12	6	42	36	9	201	201
Nursing	0	0	0	0	639	413	305	531	473	223	255	308	234	3,381	3,381
Physical	0	0	0	0	0	1	0	0	0	0	0	0	0	1	1
Psychology	564	948	1,218	1,107	1,059	1,042	757	716	722	816	743	784	820	11,296	11,296
Religion	0	0	0	3	0	0	0	0	0	0	0	0	0	3	3
Philosophy	0	0	0	3	0	0	0	0	0	0	0	0	0	3	3
MLS/AOS	0	0	8	16	0	0	0	0	0	0	0	0	0	24	24
Total	4,944	5,702	6,241	6,832	8,138	7,510	6,041	6,626	7,987	7,792	8,809	8,956	6,216	91,794.00	91,794.00

End of Trimester

*SP-12

PRODUCTION OF SCHOOL/DEPARTMENT/AREA

Graduate-Keesler

	Graduate-Keesler												Total	
	99-00	00-01	02-03	03-04	04-05	05-06	06-07	07-08	08-09	09-10	10-11	11-12*		
Business	24	0	162	255	381	327	282	138	138	336	174	102	2,319	2,319
Education	0	3	12	30	3	6	12	45	21	105	57	138	432	432
English	0	0	3	0	0	0	0	0	0	0	0	0	3	3
History	0	0	0	0	3	0	0	0	0	0	0	0	3	3
Nursing	0	0	0	0	0	20	0	0	0	0	0	0	20	20
Psychology	0	0	0	36	3	12	0	0	0	18	22	14	105	105
Total	24	3	177	321	390	365	294	183	159	459	253	254	2,882.00	2,882.00

End of Trimester *SP-12

EMPLOYEES WITH FACULTY RANK
Hattiesburg/Tradition/New Orleans - APRIL 2012

SCHOOL	PROFESSOR		ASSOCIATE PROFESSOR		ASSISTANT PROFESSOR		INSTRUCTOR		LECTURER		GENDER	
	Male	Female	Male	Female	Male	Female	Male	Female	Male	Female	Male	Female
School of Missions & Biblical Studies	D. Browning*+ D. Caldwell B. Crockett*+ S. Hummel				T. Glaze				G. Blackwell		6	0
School of Business	B. Brown+ R. Ellis+		E. Reidenbach P. Turnquist	C. Dale E. Lewis	M. Madaris J. McCay	L. Glaze P. Jones	D. Brockway B. Cousins	S. Chamber-Jones	J. Andrews J. Bracey		10	5
School of Arts & Letters	D. Browning*+ B. Crockett*+ M. Noonkester+ T. Richardson M. Wheeler+	R. Diket*+	M. Nicovich	A. Chestnut+ R. Jordan+ L. Fulton	J. Brooke D. Douglas J. Matheny	M. Breland M. Ellzey M. Kemp C. Maqueda J. Talbert T. Williams	J. Myers* E. Williams	L. Bourdene J. Brookter M. Malarcher# M. Winstead			9	14
School of Education	W. Cooper B. Waddle+ E. Owens*	R. Diket*+ J. Hornsby+ C. McShea*+	B. Morris N. Williams	D. Chapman+ K. Juneau J. Lockley P. Ward	R. Halford J. Harrison S. Knight J. Roberts L. Steverson	A. Downing D. Herring A. Houston N. Jackson D. Miller L. Mucha# B. Thomas B. Waldrip L. Weaver S. Whitcomb C. Conner M. Clark	C. Bullock J. Coleman* T. English D. Owens	P. Armstrong P. Gossage* J. Landrum* P. Yuen*			14	21
School of Nursing		M. Cooksey+ J. Williams M. Wirfs+	P. Brady	R. Dennis V. Walley D. Chatham+ M. Nesbitt+ B. Loveless		J. Commagere A. Krebs S. Freeman P. Heard J. Mansell A. Pratt K. Sicard K. Taylor		F. Browning M. Dubuisson C. Tourelle T. Bovia E. Scott M. McGill K. McCormick J. Barton			1	24
School of Music	P. Cotton* H. Kever+ M. Malone D. Odom	C. Roberts+		K. Vail	W. Dykes E. Owens* J. Armstrong	M. Byrd	W. Cameron#				6	3
Library		S. Laughlin					J. Coleman* J. Myers*	C. Conklin P. Gossage* J. Landrum* P. Yuen*			0	2
School of Natural & Behavioral Sciences	G. Breland P. Cotton* M. Daniels R. Harris*+ T. King T. Rauch+ W. Rivero M. Steele	C. McShea*+	F. Baugh*	L. Cummings C. Jones J. May L. Singletary+	G. Futral M. McNatt E. Roark* C. Shepherd T. Hodges	S. Gibson L. Horton J. Taylor*			O. Burkett K. Caffery A. Knesal A. Ramsey# R. Roberts# P. Williams		14	13

EMPLOYEES WITH FACULTY RANK
Hattiesburg/Tradition/New Orleans - APRIL 2012

SCHOOL	PROFESSOR		ASSOCIATE PROFESSOR		ASSISTANT PROFESSOR		INSTRUCTOR		LECTURER		GENDER	
	Male	Female	Male	Female	Male	Female	Male	Female	Male	Female	Male	Female
College of Osteopathic Medicine	F. Achike R. Bateman J. Bailey J. Evans R. Harris*+ J. Jones D. Lovins B.J. Martin B. Middlebrooks C. Millette J. Porter T. Sarphie J. Weir	L. Spriggs	F. Baugh* M. Brooks J. Green# G. Legradi K. Speed J. Turner J. Valentine J. McCann	P. Myers	R. Bailey# J. Glisson J. Gaudet A. Hood M. LaRochelle S. Leonard R. Margaitis W. Mayo E. Roark* K. Scott# J.K. Smith R. Stewart E. Worthington#	L. Quin J. Taylor* J. Turner S. Turner# A. Margaitis# D. White T. Worthington#	J. Griffis				32	9
	TOTAL UNIQUE FACULTY	35	9	14	20	30	38	10	18	3	6	92

*Rank in two Schools

+Tenured

#Part-Time

Totals by Campus

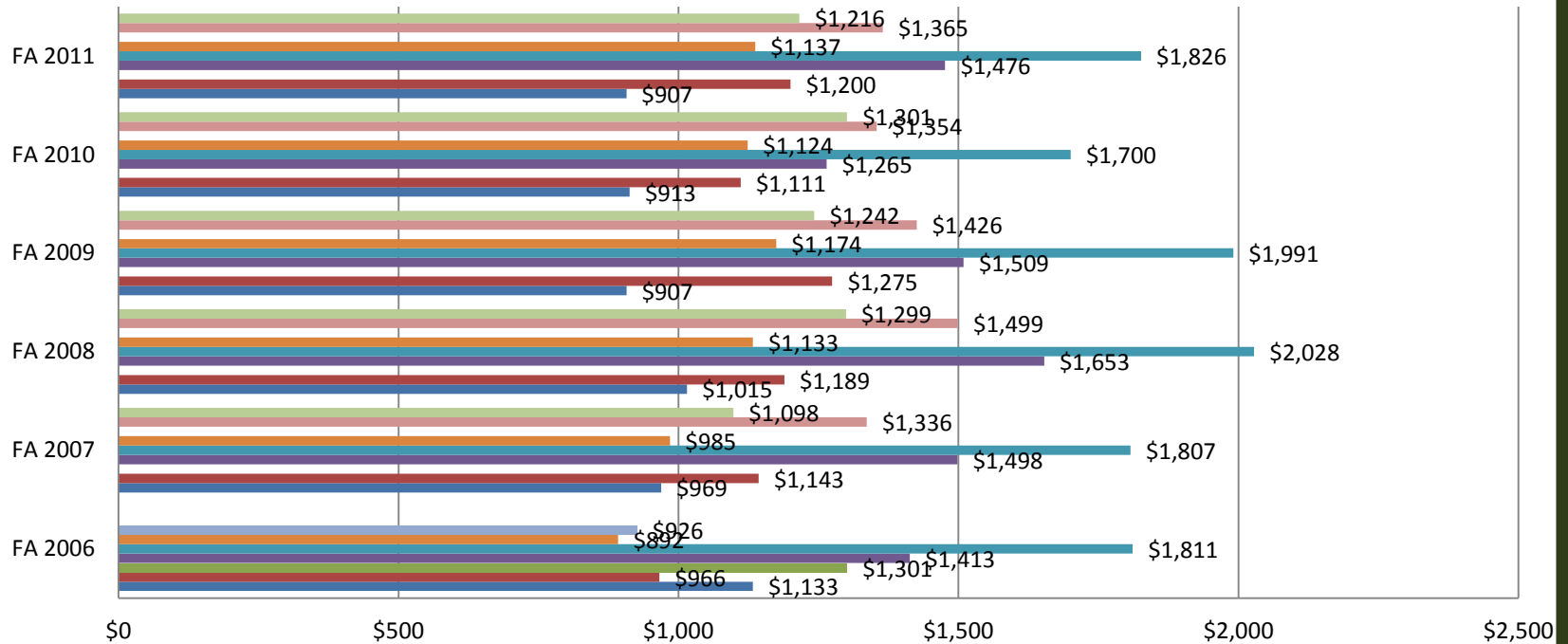
142 Hattiesburg
30 Tradition
11 New Orleans
183 Total

Tenured Statistics

22 Tenured
10 Males
12 Females
161 Non-Tenured
183 Total

WILLIAM CAREY UNIVERSITY

Average Undergraduate Scholarship per Student by Scholarship HATTIESBURG CAMPUS

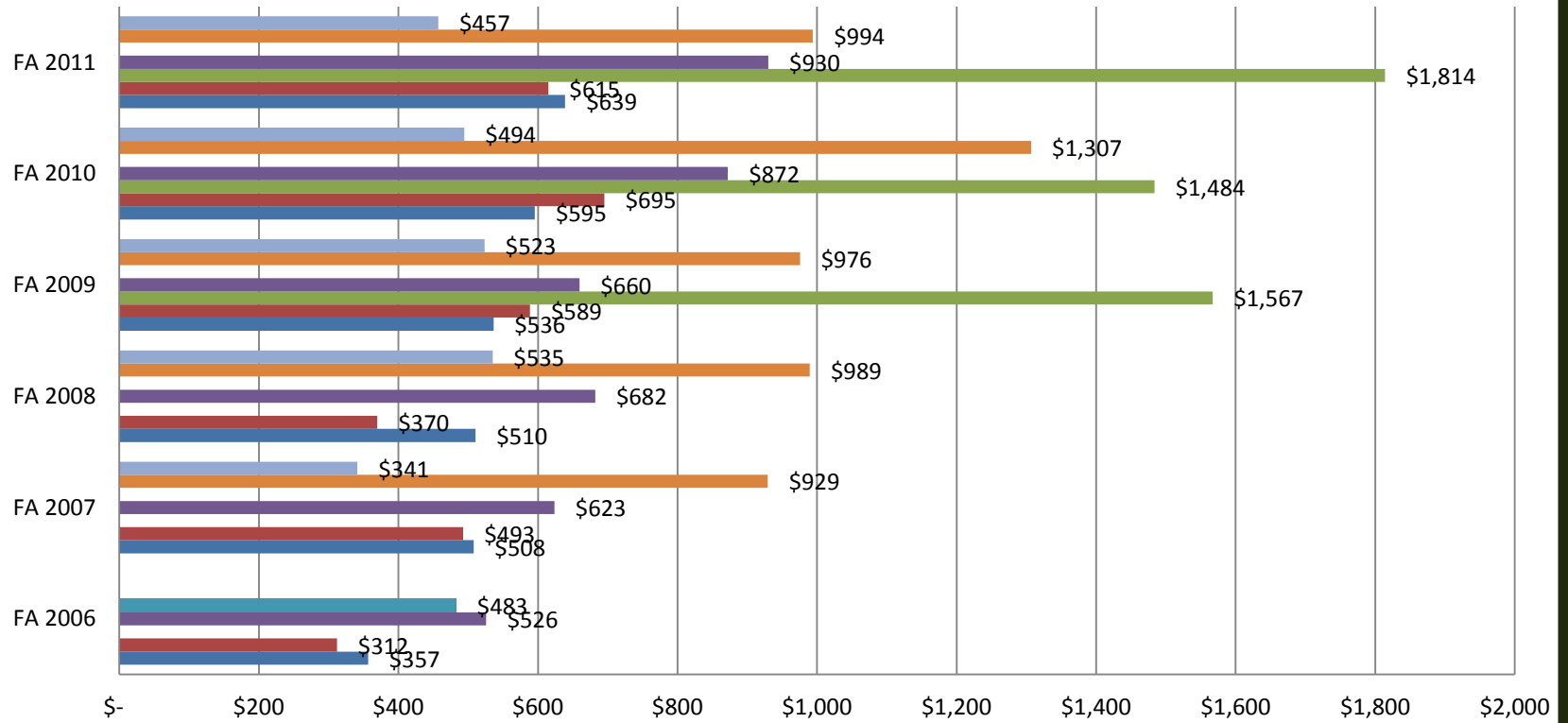


	FA 2006	FA 2007	FA 2008	FA 2009	FA 2010	FA 2011
NAT. & BEHAV. SCI.		\$1,098	\$1,299	\$1,242	\$1,301	\$1,216
ARTS & LETTERS		\$1,336	\$1,499	\$1,426	\$1,354	\$1,365
PSYCHOLOGY	\$926					
EDUCATION	\$892	\$985	\$1,133	\$1,174	\$1,124	\$1,137
MUSIC	\$1,811	\$1,807	\$2,028	\$1,991	\$1,700	\$1,826
MISSIONS	\$1,413	\$1,498	\$1,653	\$1,509	\$1,265	\$1,476
ARTS & SCI.	\$1,301					
BUSINESS	\$966	\$1,143	\$1,189	\$1,275	\$1,111	\$1,200
NURSING	\$1,133	\$969	\$1,015	\$907	\$913	\$907

WILLIAM CAREY UNIVERSITY

Average Undergraduate Scholarship per Student by School

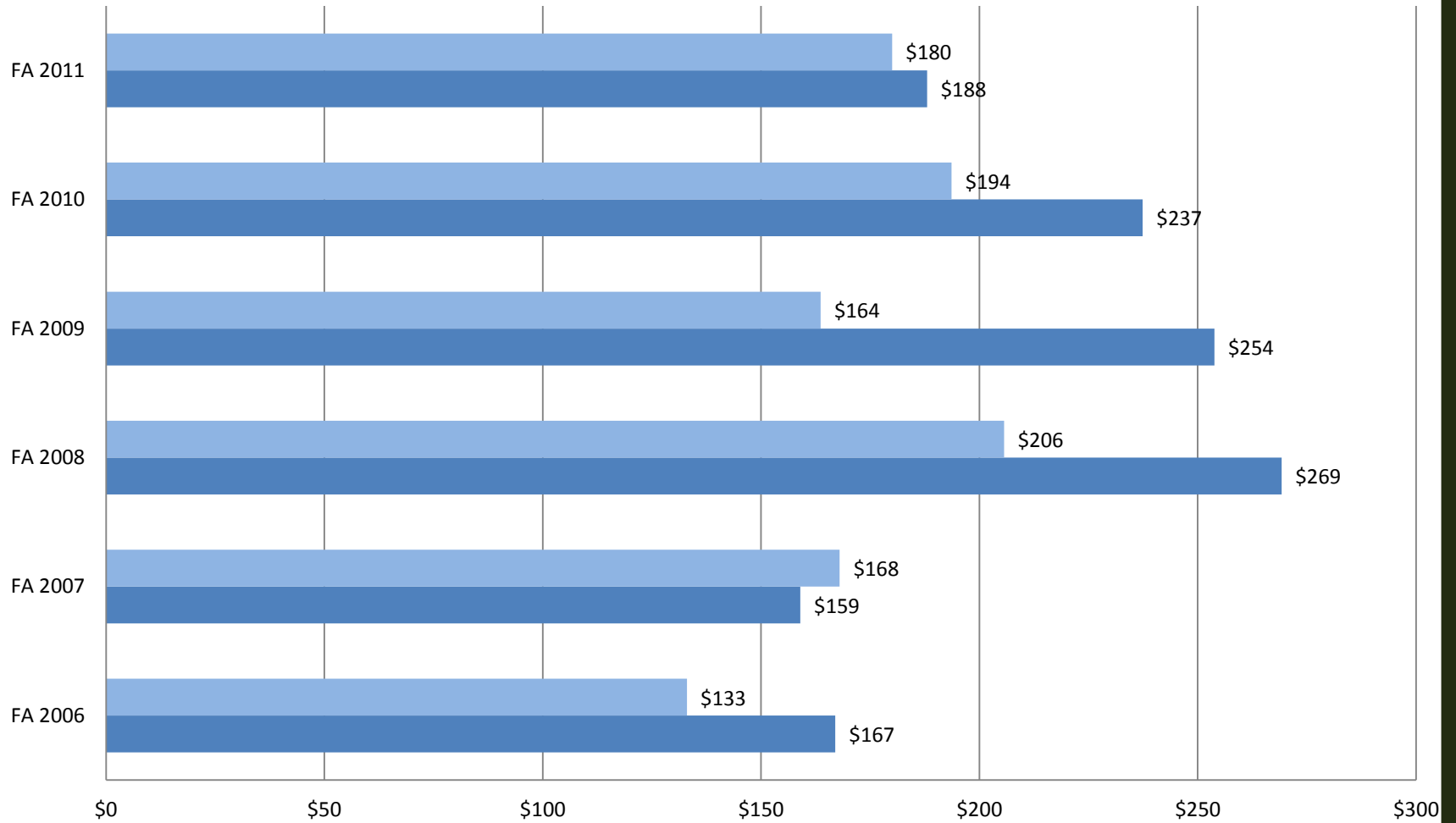
TRADITION CAMPUS



	FA 2006	FA 2007	FA 2008	FA 2009	FA 2010	FA 2011
NAT. & BEHAV. SCI		\$341	\$535	\$523	\$494	\$457
ARTS & LETTERS		\$929	\$989	\$976	\$1,307	\$994
PSYCHOLOGY	\$483					
EDUCATION	\$526	\$623	\$682	\$660	\$872	\$930
MISSIONS				\$1,567	\$1,484	\$1,814
BUSINESS	\$312	\$493	\$370	\$589	\$695	\$615
NURSING	\$357	\$508	\$510	\$536	\$595	\$639

WILLIAM CAREY UNIVERSITY

Average Undergraduate Scholarship per Student by School NEW ORLEANS CAMPUS



	FA 2006	FA 2007	FA 2008	FA 2009	FA 2010	FA 2011
■ PRE-NURSING	\$133	\$168	\$206	\$164	\$194	\$180
■ NURSING	\$167	\$159	\$269	\$254	\$237	\$188

WILLIAM CAREY UNIVERSITY
ATHLETIC SCHOLARSHIP
FALL 2011

	Hattiesburg	Total
Baseball Scholarship	33	33
	\$63,797	\$63,797
Mens Basketball Scholarship	19	19
	\$47,424	\$47,424
Mens Cross Country	4	4
	\$11,316	\$11,316
Mens Golf Scholarship	7	7
	\$11,666	\$11,666
Mens Soccer Scholarship	41	41
	\$85,981	\$85,981
Mens Tennis Scholarship	11	11
	\$25,454	\$25,454
Womens Basketball Scholarship	14	14
	\$40,013	\$40,013
Womens Cross Country	2	2
	\$6,117	\$6,117
Womens Golf Scholarship	8	8
	\$13,003	\$13,003
Womens Soccer Scholarship	21	21
	\$53,478	\$53,478
Womens Softball Scholarship	15	15
	\$39,734	\$39,734
Womens Tennis Scholarship	7	7
	\$18,335	\$18,335
SCHOLARSHIP	182	182
	\$416,318.30	\$416,318.30
Total	182	182
	\$416,318	\$416,318

03/13/2012

C:\Users\scurry\Documents\FactBook 2011-12\21-Sch Report Athletic FA-11(03132012).rpt

WILLIAM CAREY UNIVERSITY
ATHLETIC SCHOLARSHIP
WINTER 2011-2012

	Graduate-Hattiesburg	Hattiesburg	Total
Baseball Scholarship	2	30	32
	\$1,600	\$64,748	\$66,348
Mens Basketball Scholarship	0	18	18
	\$0	\$41,483	\$41,483
Mens Cross Country	0	4	4
	\$0	\$11,317	\$11,317
Mens Golf Scholarship	0	7	7
	\$0	\$11,668	\$11,668
Mens Soccer Scholarship	0	37	37
	\$0	\$79,156	\$79,156
Mens Tennis Scholarship	0	13	13
	\$0	\$29,236	\$29,236
Womens Basketball Scholarship	0	15	15
	\$0	\$40,610	\$40,610
Womens Cross Country	0	2	2
	\$0	\$6,117	\$6,117
Womens Golf Scholarship	0	6	6
	\$0	\$12,165	\$12,165
Womens Soccer Scholarship	0	21	21
	\$0	\$55,073	\$55,073
Womens Softball Scholarship	0	14	14
	\$0	\$38,859	\$38,859
Womens Tennis Scholarship	0	8	8
	\$0	\$21,333	\$21,333
SCHOLARSHIP	2	175	177
	\$1,600.00	\$411,765.10	\$413,365.10
Total	2	175	177
	\$1,600	\$411,765	\$413,365

WILLIAM CAREY UNIVERSITY
ATHLETIC SCHOLARSHIP
SPRING 2012

	Graduate-Hattiesburg	Hattiesburg	Total
Baseball Scholarship	1	27	28
	\$1,800	\$64,415	\$66,215
Mens Basketball Scholarship	0	17	17
	\$0	\$47,353	\$47,353
Mens Cross Country	0	4	4
	\$0	\$11,317	\$11,317
Mens Golf Scholarship	0	6	6
	\$0	\$10,166	\$10,166
Mens Soccer Scholarship	0	34	34
	\$0	\$75,141	\$75,141
Mens Tennis Scholarship	0	11	11
	\$0	\$25,298	\$25,298
Womens Basketball Scholarship	0	13	13
	\$0	\$38,028	\$38,028
Womens Cross Country	0	2	2
	\$0	\$6,116	\$6,116
Womens Golf Scholarship	0	6	6
	\$0	\$13,165	\$13,165
Womens Soccer Scholarship	0	19	19
	\$0	\$51,968	\$51,968
Womens Softball Scholarship	0	16	16
	\$0	\$43,000	\$43,000
Womens Tennis Scholarship	0	7	7
	\$0	\$20,031	\$20,031
SCHOLARSHIP	1	162	163
	\$1,800.00	\$405,998.00	\$407,798.00
Total	1	162	163
	\$1,800	\$405,998	\$407,798

03/13/2012

C:\Users\scurry\Documents\FactBook 2011-12\23-Sch Report Athletic SP-12(03132012).rpt

WILLIAM CAREY UNIVERSITY
UNDERGRADUATE STUDENT ENROLLMENT
BY CAMPUS/BY PROGRAM

		FA-00	FA-01	FA-02	FA-03	FA-04	FA-05	FA-06	FA-07	FA-08	FA-09	FA-10	FA-11
Hattiesburg	SCHOOL OF ARTS & LETTERS	116	114	125	136	139	142	145	154	162	140	170	163
	SCHOOL OF BUSINESS	109	119	113	142	161	135	166	174	178	160	185	186
	SCHOOL OF EDUCATION	260	249	236	268	244	262	299	289	298	303	306	240
	SCHOOL OF NAT. & BEHAVIORAL SCIENCES	191	161	195	212	210	250	246	271	284	357	382	381
	SCHOOL OF MISSIONS & BIBLICAL STUDIES	114	92	81	75	73	69	75	72	63	69	75	72
	SCHOOL OF MUSIC	83	82	71	62	62	60	50	59	53	51	72	79
	SCHOOL OF NURSING	101	110	92	137	166	255	192	151	148	213	233	245
	OTHERS	80	60	64	72	57	57	78	105	134	185	245	239
	Total	1,052	986	976	1,103	1,111	1,230	1,251	1,275	1,320	1,478	1,668	1,605
New Orleans	SCHOOL OF NAT. & BEHAVIORAL SCIENCES	0	0	0	0	1	0	1	1	4	0	1	26
	SCHOOL OF MISSIONS & BIBLICAL STUDIES	0	0	0	0	0	0	0	0	1	0	0	0
	SCHOOL OF NURSING	171	159	175	225	301	0	138	170	198	242	295	240
	OTHERS	0	0	0	0	3	0	3	11	7	9	11	0
	Total	171	159	175	225	305	0	142	182	210	251	307	266
	SCHOOL OF ARTS & LETTERS	64	63	67	72	77	22	31	29	23	22	14	19
Tradition	SCHOOL OF BUSINESS	68	60	59	40	40	26	21	31	33	50	71	86
	SCHOOL OF EDUCATION	53	67	45	44	59	60	62	71	100	100	98	102
	SCHOOL OF NAT. & BEHAVIORAL SCIENCES	48	30	31	33	33	28	26	21	26	29	37	44
	SCHOOL OF MISSIONS & BIBLICAL STUDIES	1	1	1	2	0	0	0	0	0	1	2	2
	SCHOOL OF MUSIC	0	0	0	0	0	0	0	0	0	1	0	0
	SCHOOL OF NURSING	77	85	86	116	169	122	74	79	96	109	175	172
	OTHERS	94	99	83	64	28	23	22	18	25	28	17	4
	Total	403	405	372	371	406	281	236	249	303	340	414	429
	Total	1,626	1,550	1,523	1,699	1,822	1,511	1,629	1,706	1,833	2,069	2,389	2,300

03/13/2012 End of Trimester Numbers

Keesler included in Tradition campus

WILLIAM CAREY UNIVERSITY
UNDERGRADUATE STUDENT ENROLLMENT
RALPH AND NAOMI NOONKESTER
SCHOOL OF ARTS AND LETTERS

		FA-05	FA-06	FA-07	FA-08	FA-09	FA-10	FA-11
Hattiesburg	DEPT OF ART	3	1	3	7	9	14	15
	DEPT OF HISTORY & SOCIAL SCIENCE	54	50	55	62	52	58	50
	DEPT OF LANGUAGE & LITERATURE	37	38	37	49	46	48	42
	DEPT OF THEATRE & COMMUNICATION	48	56	59	44	33	50	56
	Total	142	145	154	162	140	170	163
Keesler	DEPT OF ART	1	2	1	1	0	0	0
	DEPT OF HISTORY & SOCIAL SCIENCE	0	0	2	0	1	0	1
	Total	1	2	3	1	1	0	1
Tradition	DEPT OF ART	18	27	22	18	19	11	13
	DEPT OF HISTORY & SOCIAL SCIENCE	1	1	1	2	1	3	3
	DEPT OF LANGUAGE & LITERATURE	2	1	2	2	1	0	2
	DEPT OF THEATRE & COMMUNICATION	0	0	1	0	0	0	0
	Total	21	29	26	22	21	14	18
Total		164	176	183	185	162	184	182

03/13/2012 End of Trimester Numbers

WILLIAM CAREY UNIVERSITY
UNDERGRADUATE STUDENT ENROLLMENT
DEPARTMENT OF ART

			FA-05	FA-06	FA-07	FA-08	FA-09	FA-10	FA-11
Hattiesburg	Art	Graphic Design	0	1	0	0	0	0	1
		Non-Art Minor	2	0	0	0	0	7	11
		Total	2	1	0	0	0	7	12
	Art-BA	Graphic Design	0	0	0	0	1	1	1
		Non-Art Minor	1	0	2	5	6	6	2
		Total	1	0	2	5	7	7	3
	Art-BFA	Non-Art Minor	0	0	1	2	2	0	0
		Total	0	0	1	2	2	0	0
		Total	3	1	3	7	9	14	15
	Tradition	Art	Ceramics	2	2	1	1	1	0
Graphic Design			3	10	9	3	1	2	3
Painting			3	2	2	2	0	0	0
Sculpture			3	6	2	0	0	0	0
Non-Art Minor			3	1	0	0	2	3	9
Total		14	21	14	6	4	5	12	
Art-BA		Graphic Design	0	0	2	4	2	1	0
		Painting	0	0	0	1	1	0	0
		Total	0	0	2	5	3	1	0
Art-BFA		Art	0	0	0	0	1	1	0
		Non-Art Minor	0	1	1	4	4	1	0
		Total	0	1	1	4	5	2	0
		Ceramics	0	2	1	0	0	0	0
		Graphic Design	3	3	3	1	2	1	1
		Painting	0	0	0	1	2	2	0
		Art Education	0	1	0	0	0	0	0
		Non-Art Minor	2	1	2	2	3	0	0
Total		5	7	6	4	7	3	1	
Total		19	29	23	19	19	11	13	
Total			22	30	26	26	28	25	28

WILLIAM CAREY UNIVERSITY
UNDERGRADUATE STUDENT ENROLLMENT
DEPARTMENT OF HISTORY AND SOCIAL SCIENCE

		FA-05	FA-06	FA-07	FA-08	FA-09	FA-10	FA-11
Hattiesburg	History	32	26	31	29	23	27	21
	Social Science	22	24	24	33	29	31	29
	Total	54	50	55	62	52	58	50
Keesler	History	0	0	1	0	0	0	0
	Social Science	0	0	1	0	1	0	1
	Total	0	0	2	0	1	0	1
Tradition	History	0	1	0	0	1	2	0
	Social Science	1	0	1	2	0	1	3
	Total	1	1	1	2	1	3	3
Total		55	51	58	64	54	61	54

03/13/2012 End of Trimester Numbers

WILLIAM CAREY UNIVERSITY
UNDERGRADUATE STUDENT ENROLLMENT
DEPARTMENT OF LANGUAGE AND LITERATURE

ENGLISH	FA-05	FA-06	FA-07	FA-08	FA-09	FA-10	FA-11
Hattiesburg	37	38	37	49	46	48	42
Tradition	2	1	2	2	1	0	2
Total	39	39	39	51	47	48	44

03/13/2012 End of Trimester Numbers

WILLIAM CAREY UNIVERSITY
UNDERGRADUATE STUDENT ENROLLMENT
DEPARTMENT OF THEATRE AND COMMUNICATION

		FA-05	FA-06	FA-07	FA-08	FA-09	FA-10	FA-11
Hattiesburg	Communication	1	0	0	0	0	0	0
	Journalism	7	7	2	0	0	0	0
	Mass Communication	2	19	22	19	13	16	20
	Public Relations	1	0	0	0	0	0	0
	Speech Communication	16	10	16	9	6	7	9
	Speech Communication and Theatre	5	5	3	1	1	4	0
	Theatre	16	15	16	15	13	23	27
	Total	48	56	59	44	33	50	56
Total		48	56	59	44	33	50	56

03/13/2012 End of Trimester Numbers

WILLIAM CAREY UNIVERSITY
UNDERGRADUATE STUDENT ENROLLMENT
SCHOOL OF BUSINESS

		FA-05	FA-06	FA-07	FA-08	FA-09	FA-10	FA-11
Hattiesburg	Accounting	21	21	27	26	26	28	24
	Computer Information Systems	12	8	12	15	11	20	18
	Finance	10	15	24	28	20	18	24
	General Studies	8	21	13	7	3	8	8
	Management/Marketing	64	89	94	101	94	103	109
	Workforce Training & Mgnt	1	0	0	0	0	0	1
	Non Business Minor/Concentration	19	11	4	1	6	8	2
	Total	135	165	174	178	160	185	186
Keesler	Accounting	1	0	0	0	0	0	0
	Computer Information Systems	2	0	0	0	0	0	0
	Finance	1	0	0	0	0	0	0
	General Studies	1	1	0	1	0	5	4
	Management/Marketing	1	3	3	3	5	4	2
	Workforce Training & Mgnt	0	2	1	0	1	2	0
	Non Business Minor/Concentration	2	1	2	0	0	0	0
	Total	8	7	6	4	6	11	6
Tradition	Accounting	3	1	1	0	3	9	3
	Computer Information Systems	1	2	0	0	0	3	5
	Finance	1	1	0	0	2	4	1
	General Studies	0	0	0	1	1	4	15
	Management/Marketing	6	6	21	26	31	28	45
	Workforce Training & Mgnt	6	1	2	1	6	12	10
	Non Business Minor/Concentration	1	3	1	1	0	0	1
	Total	18	14	25	29	43	60	80
Total		161	186	205	211	209	256	272

WILLIAM CAREY UNIVERSITY
UNDERGRADUATE STUDENT ENROLLMENT
SCHOOL OF EDUCATION

		FA-05	FA-06	FA-07	FA-08	FA-09	FA-10	FA-11
Hattiesburg	DEPT OF EDUCATION	212	237	229	238	233	232	177
	DEPT OF HEALTH, PE, RECREATION & COACHING	50	62	59	60	70	74	61
	Total	262	299	288	298	303	306	238
Keesler	DEPT OF EDUCATION	1	3	4	1	6	5	5
	DEPT OF HEALTH, PE, RECREATION & COACHING	0	0	0	0	0	0	1
	Total	1	3	4	1	6	5	6
Tradition	DEPT OF EDUCATION	32	58	67	98	93	93	96
	DEPT OF HEALTH, PE, RECREATION & COACHING	1	0	0	0	1	0	0
	Total	33	58	67	98	94	93	96
Total		296	360	359	397	403	404	340

03/13/2012 End of Trimester Numbers

WILLIAM CAREY UNIVERSITY
UNDERGRADUATE STUDENT ENROLLMENT
DEPARTMENT OF EDUCATION

		FA-05	FA-06	FA-07	FA-08	FA-09	FA-10	FA-11
Hattiesburg	Career and Technical Education	0	0	0	0	0	1	1
	Elementary Education	212	237	229	238	233	231	176
	Total	212	237	229	238	233	232	177
Keesler	Career and Technical Education	0	0	0	0	0	2	5
	Elementary Education	1	3	4	1	6	3	0
	Total	1	3	4	1	6	5	5
Tradition	Career and Technical Education	0	0	0	0	0	2	5
	Elementary Education	32	58	67	98	93	91	91
	Total	32	58	67	98	93	93	96
Total		245	298	300	337	332	330	278

03/13/2012 End of Trimester Numbers

WILLIAM CAREY UNIVERSITY
UNDERGRADUATE STUDENT ENROLLMENT
DEPARTMENT OF HEALTH, PHYSICAL EDUCATION, RECREATION, AND COACHING

		FA-05	FA-06	FA-07	FA-08	FA-09	FA-10	FA-11
Hattiesburg	Health, Physical Education, and Recreation	4	25	38	45	57	57	44
	Physical Education	46	37	21	15	13	17	17
	Total	50	62	59	60	70	74	61
Keesler	Physical Education	0	0	0	0	0	0	1
	Total	0	0	0	0	0	0	1
Tradition	Health, Physical Education, and Recreation	0	0	0	0	1	0	0
	Physical Education	1	0	0	0	0	0	0
	Total	1	0	0	0	1	0	0
Total		51	62	59	60	71	74	62

03/13/2012 End of Trimester Numbers

WILLIAM CAREY UNIVERSITY
UNDERGRADUATE STUDENT ENROLLMENT
SCHOOL OF NATURAL AND BEHAVIORAL SCIENCES

		FA-05	FA-06	FA-07	FA-08	FA-09	FA-10	FA-11
Hattiesburg	DEPT OF BIOLOGICAL SCIENCES	84	91	95	84	92	118	143
	DEPT OF CHEMISTRY & PHY SCIENCES	7	6	5	5	10	10	6
	DEPT OF MATHEMATICS	25	23	16	16	25	40	28
	DEPT OF PSYCHOLOGY	134	126	155	179	230	214	204
	Total	250	246	271	284	357	382	381
Keesler	DEPT OF BIOLOGICAL SCIENCES	0	0	0	0	0	0	1
	DEPT OF MATHEMATICS	0	1	1	0	0	0	0
	DEPT OF PSYCHOLOGY	5	4	3	3	3	1	3
	Total	5	5	4	3	3	1	4
Tradition	DEPT OF BIOLOGICAL SCIENCES	3	0	1	3	4	4	6
	DEPT OF MATHEMATICS	0	0	0	0	1	0	1
	DEPT OF PSYCHOLOGY	20	21	16	20	21	32	33
	Total	23	21	17	23	26	36	40
Total		278	272	292	310	386	419	425

03/13/2012 End of Trimester Numbers

WILLIAM CAREY UNIVERSITY
UNDERGRADUATE STUDENT ENROLLMENT
DEPARTMENT OF BIOLOGICAL SCIENCES

		FA-05	FA-06	FA-07	FA-08	FA-09	FA-10	FA-11
Hattiesburg	Biology	79	83	87	77	80	107	133
	Health Related Professions	5	8	8	7	12	11	10
	Total	84	91	95	84	92	118	143
Keesler	Biology	0	0	0	0	0	0	1
	Total	0	0	0	0	0	0	1
Tradition	Biology	2	0	1	2	4	2	6
	Health Related Professions	1	0	0	1	0	2	0
	Total	3	0	1	3	4	4	6
Total		87	91	96	87	96	122	150

03/13/2012 End of Trimester Numbers

WILLIAM CAREY UNIVERSITY
UNDERGRADUATE STUDENT ENROLLMENT
DEPARTMENT OF CHEMISTRY AND THE PHYSICAL SCIENCES

CHEMISTRY	FA-05	FA-06	FA-07	FA-08	FA-09	FA-10	FA-11
Hattiesburg	7	6	5	5	10	10	6
Total	7	6	5	5	10	10	6

03/13/2012 End of Trimester Numbers

WILLIAM CAREY UNIVERSITY
UNDERGRADUATE STUDENT ENROLLMENT
DEPARTMENT OF MATHEMATICS

MATHEMATICS	FA-05	FA-06	FA-07	FA-08	FA-09	FA-10	FA-11
Hattiesburg	25	23	16	16	25	40	28
Keesler	0	1	1	0	0	0	0
Tradition	0	0	0	0	1	0	1
Total	25	24	17	16	26	40	29

03/13/2012 End of Trimester Numbers

WILLIAM CAREY UNIVERSITY
UNDERGRADUATE STUDENT ENROLLMENT
DEPARTMENT OF PSYCHOLOGY

PSYCHOLOGY	FA-05	FA-06	FA-07	FA-08	FA-09	FA-10	FA-11
Hattiesburg	134	126	155	179	230	214	204
Keesler	5	4	3	3	3	1	3
Tradition	20	21	16	20	21	32	33
Total	159	151	174	202	254	247	240

03/13/2012 End of Trimester Numbers

WILLIAM CAREY UNIVERSITY
UNDERGRADUATE STUDENT ENROLLMENT
OWEN & ELIZABETH COOPER SCHOOL OF MISSIONS & BIBLICAL STUDIES

RELIGION	FA-05	FA-06	FA-07	FA-08	FA-09	FA-10	FA-11
Hattiesburg	69	75	72	63	69	75	72
Tradition	0	0	0	0	1	2	2
Total	69	75	72	63	70	77	74

03/13/2012 End of Trimester Numbers

WILLIAM CAREY UNIVERSITY
UNDERGRADUATE STUDENT ENROLLMENT
DONALD & FRANCIS WINTERS SCHOOL OF MUSIC

		FA-05	FA-06	FA-07	FA-08	FA-09	FA-10	FA-11
Hattiesburg	Church Music	4	4	5	5	4	9	17
	Guitar Performance	5	3	0	0	0	0	0
	Music	4	1	0	0	0	0	3
	Music Education	15	16	19	19	19	23	24
	Music Therapy	15	14	14	15	15	21	23
	Music-BA	6	5	4	1	3	7	3
	Music-Performance	6	5	16	13	10	12	9
	Organ Performance	1	0	0	0	0	0	0
	Piano Performance	1	1	0	0	0	0	0
	Vocal Performance	3	1	1	0	0	0	0
	Total	60	50	59	53	51	72	79
Total		60	50	59	53	51	72	79

03/13/2012 End of Trimester Numbers

WILLIAM CAREY UNIVERSITY
UNDERGRADUATE STUDENT ENROLLMENT
JOSEPH & NANCY FAIL SCHOOL OF NURSING

NURSING	FA-05	FA-06	FA-07	FA-08	FA-09	FA-10	FA-11
Hattiesburg	255	192	151	148	213	233	245
Keesler AFB	8	8	8	9	11	14	9
Tradition	114	66	71	87	98	161	163
Total	377	266	230	244	322	408	417

03/13/2012 End of Trimester Numbers

WILLIAM CAREY UNIVERSITY
GRADUATE STUDENT ENROLLMENT
BY CAMPUS/BY PROGRAM

		FA-00	FA-01	FA-02	FA-03	FA-04	FA-05	FA-06	FA-07	FA-08	FA-09	FA-10	FA-11
Graduate-Hattiesburg	MM	0	0	0	0	0	0	0	0	12	12	6	5
	MA-ENG	0	0	0	0	0	1	0	0	0	0	7	5
	MA-HIS	0	0	0	0	0	0	0	0	0	0	0	4
	MBA	69	48	44	49	59	44	45	46	50	41	39	43
	MBS	0	0	0	0	0	0	0	0	0	18	9	5
	MS-BIO	0	0	0	0	0	0	0	0	0	0	0	1
	MSN	0	0	0	0	0	1	0	0	17	45	35	28
	MED/SPED	302	324	317	391	372	386	386	426	522	491	485	498
	MS-PSY	56	97	88	123	112	130	124	125	129	103	125	143
	Total	427	469	449	563	543	562	555	597	730	710	706	732
Graduate-Keesler	MBA	0	0	0	9	13	9	13	6	5	10	9	8
	MED/SPED	0	0	0	1	0	0	1	1	1	4	3	6
	MS-PSY	0	0	0	1	0	1	0	0	0	0	1	1
Total	0	0	0	11	13	10	14	7	6	14	13	15	
Graduate-Tradition	MBA	83	75	74	81	76	68	62	89	97	108	101	88
	MSN	0	0	0	28	16	14	17	24	4	0	23	17
	MED/SPED	138	149	155	181	195	191	175	213	239	268	322	293
	MS-PSY	30	44	44	49	50	40	32	37	46	44	38	60
	Total	251	268	273	339	337	313	286	363	386	420	484	458
Total		678	737	722	913	893	885	855	967	1,122	1,144	1,203	1,205

WILLIAM CAREY UNIVERSITY
GRADUATE STUDENT ENROLLMENT
DEPARTMENT OF LANGUAGE & LITERATURE
MASTER OF ARTS IN ENGLISH

MA - ENGLISH	FA-10	FA-11
Graduate-Hattiesburg	7	5
Total	7	5

03/13/2012 End of Trimester Numbers

WILLIAM CAREY UNIVERSITY
GRADUATE STUDENT ENROLLMENT
DEPARTMENT OF LANGUAGE & LITERATURE
MASTER OF ARTS IN HISTORY

MA - HISTORY	FA-11
Graduate-Hattiesburg	4
Total	4

03/13/2012 End of Trimester Numbers

WILLIAM CAREY UNIVERSITY
GRADUATE STUDENT ENROLLMENT
DEPARTMENT OF BIOLOGICAL SCIENCES
MASTER OF BIOMEDICAL SCIENCE

MBS	FA-09	FA-10	FA-11
Graduate-Hattiesburg	18	9	5
Total	18	9	5

03/13/2012 End of Trimester Numbers

WILLIAM CAREY UNIVERSITY
GRADUATE STUDENT ENROLLMENT
SCHOOL OF BUSINESS
MASTER OF BUSINESS ADMINISTRATION

MBA	FA-05	FA-06	FA-07	FA-08	FA-09	FA-10	FA-11
Graduate-Hattiesburg	42	45	46	50	41	39	43
Graduate-Keesler	9	13	6	5	10	9	8
Graduate-Tradition	68	62	88	97	108	101	88
Total	119	120	140	152	159	149	139

3/29/2012 End of Trimester Numbers

WILLIAM CAREY UNIVERSITY
MASTER OF EDUCATION/SPECIALIST IN EDUCATION
Graduate - Hattiesburg Enrollment

	FA-05	FA-06	FA-07	FA-08	FA-09	FA-10	FA-11
Social Science Add-On Endorsement	0	0	0	2	1	3	3
Severe/Profound Disability Add on Endorsement	0	13	0	0	1	0	0
Reading Add-On Endorsement	1	2	4	4	5	9	8
Mild/Moderate Disabilities Add-On Endorsement	1	0	0	0	0	0	0
Mild/Mod. Disabilities Add-On Endorsement	0	1	6	10	10	6	11
MED-Unknown	1	1	1	15	3	4	3
MED-Social Sciences	0	0	9	16	13	7	6
MED-Secondary Education	59	42	45	60	54	44	42
MED-Reading Add-On Endorsement	0	1	0	0	0	0	0
MED-Mild/Moderate Disabilities	42	32	24	27	29	24	28
MED-Mathmatics	0	0	0	0	0	4	3
MED-Gifted Education	10	14	14	13	16	16	14
MED-English	24	26	18	29	34	24	20
MED-Elementary Education	109	106	106	142	118	94	91
MED-Certification Only	0	1	4	0	0	0	0
MED-Career and Technical Education	0	0	0	0	0	0	4
MED-Biology	0	0	2	4	2	12	7
MED-Art of Teaching(Secondary)	50	73	98	87	104	95	89
MED-Art of Teaching(Elementary)	78	66	77	95	84	76	79
Mathematics Add-On Endorsement	0	0	0	0	0	2	1
Gifted Add-On Endorsement	3	5	11	9	15	9	8
English Add-On Endorsement	0	0	1	2	2	0	1
Elementary Education	0	0	0	1	0	0	0
Education	1	0	0	0	0	0	0
EDS-Higher ED Administration	0	0	0	0	0	54	76
EDS-Elementary Education	7	3	5	6	0	2	4
Total	386	386	425	522	491	485	498

WILLIAM CAREY UNIVERSITY
MASTER OF EDUCATION/SPECIALIST IN EDUCATION

Graduate - Keesler Enrollment

	FA-06	FA-07	FA-08	FA-09	FA-10	FA-11
MED-Secondary Education	0	0	0	0	1	0
MED-Elementary Education	1	0	0	1	1	0
MED-Career and Technical Education	0	0	0	0	0	4
MED-Art of Teaching(Secondary)	0	0	1	2	1	2
MED-Art of Teaching(Elementary)	0	1	0	1	0	0
Total	1	1	1	4	3	6

3/29/2012 End of Trimester Numbers

WILLIAM CAREY UNIVERSITY
STUDENT ENROLLMENT
MASTER OF EDUCATION/SPECIALIST IN EDUCATION

Graduate - Tradition Enrollment

	FA-05	FA-06	FA-07	FA-08	FA-09	FA-10	FA-11
Reading Add-On Endorsement	0	0	0	1	1	6	2
Mild/Mod. Disabilities Add-On Endorsement	0	0	0	2	3	3	3
MED-Unknown	0	1	1	2	1	2	0
MED-Social Sciences	0	0	0	0	1	1	0
MED-Secondary Education	25	25	33	38	38	46	43
MED-Mild/Moderate Disabilities	5	6	9	8	11	8	11
MED-Mathmatics	0	0	0	0	0	2	1
MED-Gifted Education	4	7	1	3	7	9	8
MED-English	2	2	4	3	6	9	5
MED-Elementary Education	46	54	62	53	60	83	62
MED-Certification Only	0	0	0	1	0	0	0
MED-Career and Technical Education	0	0	0	0	0	3	4
MED-Biology	0	0	0	0	0	1	0
MED-Art of Teaching(Secondary)	28	41	58	55	74	70	65
MED-Art of Teaching(Elementary)	34	37	41	64	61	54	57
MED-Art Education	0	0	1	0	3	4	4
Gifted Add-On Endorsement	1	0	1	4	2	4	4
English Add-On Endorsement	0	0	0	0	0	3	2
Education	46	2	0	5	0	1	1
EDS-Higher ED Administration	0	0	0	0	0	11	19
EDS-Elementary Education	0	0	2	0	0	2	2
Total	191	175	213	239	268	322	293

3/29/2012 End of Trimester Numbers

WILLIAM CAREY UNIVERSITY
GRADUATE STUDENT ENROLLMENT
DONALD & FRANCES WINTERS SCHOOL OF MUSIC
MASTER OF MUSIC IN MUSIC EDUCATION

MM	FA-08	FA-09	FA-10	FA-11
Graduate-Hattiesburg	12	12	6	5
Total	12	12	6	5

03/31/2012 End of Trimester Numbers

WILLIAM CAREY UNIVERSITY
GRADUATE STUDENT ENROLLMENT
DEPARTMENT OF LANGUAGE & LITERATURE
MASTER OF SCIENCE IN BIOLOGICAL SCIENCES

MS - BIOLOGICAL SCIENCE	FA-11
Graduate-Hattiesburg	1
Total	1

03/13/2012 End of Trimester Numbers

WILLIAM CAREY UNIVERSITY
MASTER OF SCIENCE IN COUNSELING PSYCHOLOGY

Graduate - Hattiesburg Enrollment

	FA-05	FA-06	FA-07	FA-08	FA-09	FA-10	FA-11
School Psychometry Add-On Endorsement	15	2	4	2	1	1	2
School Counseling Add-On Endorsement	21	40	33	31	17	4	0
Psychology	0	1	1	0	0	0	0
M.S.-School Psychometry	5	4	2	2	1	1	3
M.S.-School Counseling	12	12	19	18	19	16	14
M.S.-Organizational Counseling	0	0	0	0	0	0	1
M.S.-Gerontology	5	2	2	2	3	2	5
M.S.-Counseling Psychology	4	5	10	15	17	23	26
M.S.-Counseling	7	4	4	2	1	0	1
M.S.-Christian Counseling	14	14	13	15	10	8	11
M.S.-Child/Adolescent Therapy	33	35	31	33	27	61	70
LPC Licensure	14	5	6	9	7	9	10
Total	130	124	125	129	103	125	143

3/29/2012 End of Trimester Numbers

WILLIAM CAREY UNIVERSITY
MASTER OF SCIENCE IN COUNSELING PSYCHOLOGY

Graduate - Keesler Enrollment

	FA-05	FA-10	FA-11
School Counseling Add-On Endorsement	1	0	0
M.S.-Organizational Counseling	0	1	1
Total	1	1	1

3/29/2012 End of Trimester Numbers

WILLIAM CAREY UNIVERSITY
MASTER OF SCIENCE IN COUNSELING PSYCHOLOGY

Graduate - Tradition Enrollment

	FA-05	FA-06	FA-07	FA-08	FA-09	FA-10	FA-11
School Psychometry Add-On Endorsement	6	3	5	8	13	12	16
School Counseling Add-On Endorsement	6	6	9	8	5	1	0
Psychology	1	0	0	1	0	0	0
MS-Organizational Counseling	0	0	0	6	5	3	1
M.S.-School Psychometry	1	1	0	1	2	2	0
M.S.-School Counseling	11	5	10	11	6	4	10
M.S.-Organizational Counseling	0	0	0	0	6	7	14
M.S.-Industrial/Organization	15	14	8	5	1	0	0
M.S.-Gerontology	0	0	0	0	0	0	1
M.S.-Counseling Psychology	0	0	2	2	4	4	12
M.S.-Counseling	0	1	0	1	0	1	0
M.S.-Christian Counseling	0	1	0	0	0	0	0
M.S.-Child/Adolescent Therapy	0	0	0	0	1	1	4
LPC Licensure	0	1	3	2	1	3	2
Counseling Psychology	0	0	0	1	0	0	0
Total	40	32	37	46	44	38	60

WILLIAM CAREY UNIVERSITY
GRADUATE STUDENT ENROLLMENT
JOSEPH & NANCY FAIL SCHOOL OF NURSING
MASTER OF SCIENCE IN NURSING

MSN	FA-05	FA-06	FA-07	FA-08	FA-09	FA-10	FA-11
Graduate-Hattiesburg	0	0	0	17	44	35	28
Graduate-Tradition	14	17	24	4	0	23	17
Total	14	17	24	21	44	58	45

3/29/2012 End of Trimester Numbers