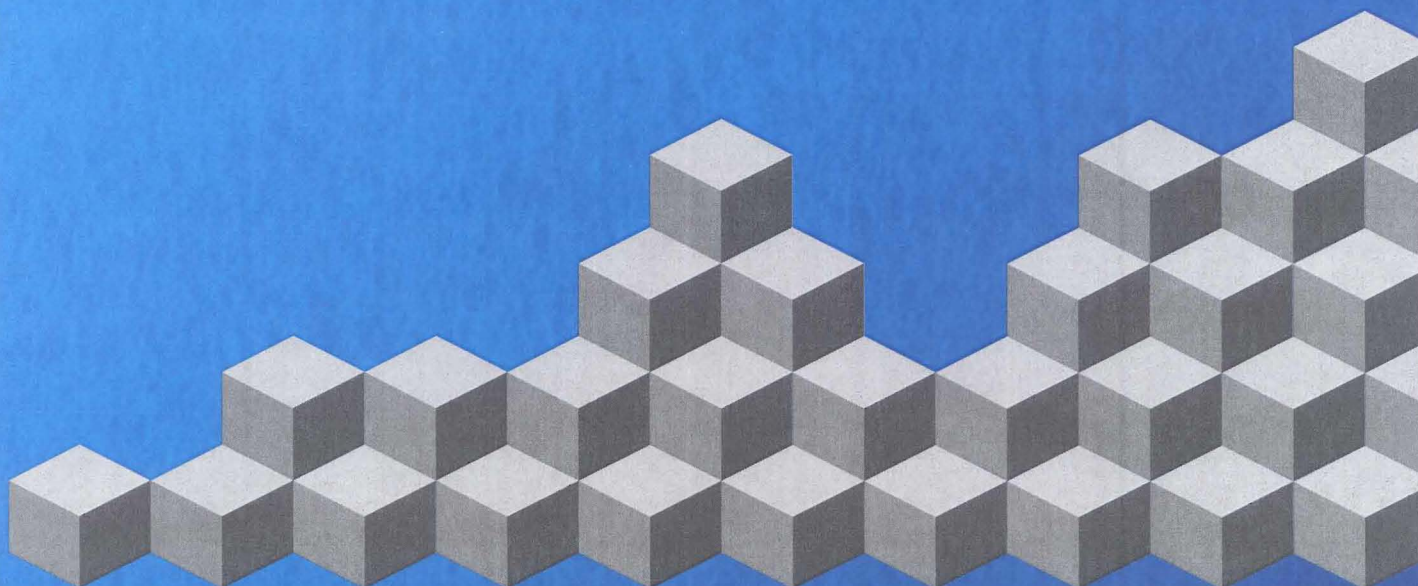


WILLIAM CAREY UNIVERSITY

Institutional Research Report

2009

Graduate Follow-Up Report



CONTENTS

Summary - Combined Campuses
Summary - Hattiesburg Campus
Summary - New Orleans Campus
Summary - Tradition Campus

Art - Tradition

Biology - Hattiesburg

BGS - New Orleans

Business Administration - Combined

Education - Hattiesburg

Education - Tradition

Nursing - Hattiesburg

Nursing - New Orleans

Nursing - Tradition

Psychology - Hattiesburg

Religion - Hattiesburg

Master of Business Administration - Combined

Master of Education - Hattiesburg

Master of Education - Tradition



GRADUATE FOLLOW-UP REPORT

Date of Interview _____ Interviewer _____

Department _____ / Major _____

Name _____ Graduation Date _____

Phone number _____

Where are you employed? _____

Job description _____

2. I am presently an active member of a church 1. Yes 2. No Name of Church _____

5. Type of Employer: Church(5) Federal/State(4) Educational(3) Military(2) Private (1)

8. Job preparation received at William Carey University: Excellent(5) Good(4) Fair(3) Inadequate(2)

10. Are you: Presently enrolled in a graduate program(5) Plan to enroll in the near future(4)
Plan to enroll in the next five years(3) Do not plan to ever enroll in a graduate program(2)
Plan to pursue a military career(1)

14. Employment Status:

Full-Time in a related field(5) Full-time in unrelated field(4) Part-time related(3) Part-time unrelated(2)

18. Unemployed Status:

Unemployed and not seeking employment(5) Unemployed and seeking employment(4) Retired(3)

20. Do you recommend William Carey University to individuals seeking programs similar to the one you completed?

Yes(5) No(4)

24. Approximate GPA? 3.5-4 (5) 3.-3.5 (4) 2.5-3 (3) 2.-2.5 (2)

26. Junior college transfer Yes (1) No(2)

Please indicate your level of satisfaction with the following aspects of your college experience at WCU:

29. Instruction in courses Excellent(5) Good(4) Fair(3) Poor(2)

31. Accessibility of instructors Excellent(5) Good(4) Fair(3) Poor(2)

33. Quality of career counseling Excellent(5) Good(4) Fair(3) Poor(2)

35. Overall academic degree program Excellent(5) Good(4) Fair(3) Poor(2)

List any civic activities with which you are involved and note your membership in any civic organizations

List church related activities or organizations in which you take an active part.

0	1	2	3	4	5	6	7	8	9
0	1	2	3	4	5	6	7	8	9
0	1	2	3	4	5	6	7	8	9
0	1	2	3	4	5	6	7	8	9
0	1	2	3	4	5	6	7	8	9
0	1	2	3	4	5	6	7	8	9
0	1	2	3	4	5	6	7	8	9
0	1	2	3	4	5	6	7	8	9
0	1	2	3	4	5	6	7	8	9
0	1	2	3	4	5	6	7	8	9
0	1	2	3	4	5	6	7	8	9
0	1	2	3	4	5	6	7	8	9
0	1	2	3	4	5	6	7	8	9
0	1	2	3	4	5	6	7	8	9
0	1	2	3	4	5	6	7	8	9
0	1	2	3	4	5	6	7	8	9

1	5	4	3	2	1
2	5	4	3	2	1
3	5	4	3	2	1
4	5	4	3	2	1
5	5	4	3	2	1
6	5	4	3	2	1
7	5	4	3	2	1
8	5	4	3	2	1
9	5	4	3	2	1
10	5	4	3	2	1
11	5	4	3	2	1
12	5	4	3	2	1
13	5	4	3	2	1
14	5	4	3	2	1
15	5	4	3	2	1
16	5	4	3	2	1
17	5	4	3	2	1
18	5	4	3	2	1
19	5	4	3	2	1
20	5	4	3	2	1
21	5	4	3	2	1
22	5	4	3	2	1
23	5	4	3	2	1
24	5	4	3	2	1
25	5	4	3	2	1
26	5	4	3	2	1
27	5	4	3	2	1
28	5	4	3	2	1
29	5	4	3	2	1
30	5	4	3	2	1
31	5	4	3	2	1
32	5	4	3	2	1
33	5	4	3	2	1
34	5	4	3	2	1
35	5	4	3	2	1

36	0	1	2	3	4
A	0	1	2	3	4
	0	1	2	3	4
B	0	1	2	3	4
	0	1	2	3	4
37	0	1	2	3	4
A	0	1	2	3	4
	0	1	2	3	4
B	0	1	2	3	4
	0	1	2	3	4

WILLIAM CAREY UNIVERSITY
GRADUATE FOLLOW-UP REPORT OF 2009 GRADUATES
SUMMARY HATTIESBURG/NEW ORLEANS/TRADITION COMBINED

Course: ????????????

Class Enrollment: 0 Class Respondents: 181
School: 0 School Respondents: 181

Question		5	4	3	2	1	Omit	Resp	Str Weak	Mean	S.D.	
		Hi	%	%	%	Lo	#	#	%	%		
1		33	0	0	8	58	169	12	0	0	2.4	1.8
2	Active member of a church	0	1	0	24	76	20	161	0	0	1.3	0.5
3		0	0	50	0	50	179	2	0	0	2.0	0.0
4		0	50	25	0	25	177	4	0	0	3.0	1.2
5	Type of employer	2	13	58	0	27	20	161	0	0	2.6	1.1
6		80	0	0	20	0	176	5	0	0	4.4	1.2
7		0	0	0	0	0	181	0	0	0	0.0	0.0
8	Job preparation received	73	22	3	1	0	6	175	0	0	4.7	0.6
9		0	50	50	0	0	179	2	0	0	3.5	0.0
10	Are you: enrolled/graduate program	23	27	11	38	0	17	164	0	0	3.4	1.2
11		0	0	0	0	0	181	0	0	0	0.0	0.0
12		0	0	0	0	0	181	0	0	0	0.0	0.0
13		0	0	0	0	0	181	0	0	0	0.0	0.0
14	Employment Status: Full-Time 5	83	9	4	4	0	14	167	0	0	4.7	0.7
15		0	0	0	0	0	181	0	0	0	0.0	0.0
16		0	0	0	0	0	181	0	0	0	0.0	0.0
17		0	0	0	0	0	181	0	0	0	0.0	0.0
18	Unemployment Status:	47	53	0	0	0	166	15	0	0	4.5	0.5
19		100	0	0	0	0	180	1	0	0	5.0	0.0
20	Do you recommend William Carey	98	2	0	0	0	7	174	0	0	5.0	0.1
21		0	0	0	0	0	181	0	0	0	0.0	0.0
22		0	0	100	0	0	180	1	0	0	3.0	0.0
23		0	0	0	0	0	181	0	0	0	0.0	0.0
24	GPA? 3.5-4(5) 2.-2.5(2)	74	15	9	2	0	5	176	0	0	4.6	0.7
25		33	0	0	33	33	178	3	0	0	2.7	1.7
26	Junior College yes(1) no(2)	1	0	0	65	35	17	164	0	0	1.7	0.5
27		0	0	0	0	0	181	0	0	0	0.0	0.0
28		0	0	0	0	0	181	0	0	0	0.0	0.0
29	Instruction in courses (5)Excellent	81	15	4	0	0	4	177	0	0	4.8	0.5
30		78	22	0	0	0	172	9	0	0	4.8	0.4
31	Accessibility of instructors	81	16	2	0	0	4	177	0	0	4.8	0.5
32		50	50	0	0	0	179	2	0	0	4.5	0.0
33	Quality of career counseling	55	35	8	2	0	18	163	0	0	4.4	0.7
34		25	75	0	0	0	177	4	0	0	4.3	0.4
35	Overall academic degree program	80	17	3	1	0	7	174	0	0	4.8	0.5

WILLIAM CAREY UNIVERSITY
 GRADUATE FOLLOW-UP REPORT OF 2009 GRADUATES
 SUMMARY HATTIESBURG CAMPUS SUMMARY

Course: ????????????

Class Enrollment: 0 Class Respondents: 47
 School: 0 School Respondents: 47

Question	5	4	3	2	1	Omit	Resp	Str	Weak	Mean	S.D.
	Hi	%	%	%	Lo	#	#	%	%		
1	33	0	0	11	56	38	9	0	0	2.4	1.8
2 Active member of a church	0	0	0	13	87	9	38	0	0	1.1	0.3
3	0	0	50	0	50	45	2	0	0	2.0	0.0
4	0	67	33	0	0	44	3	0	0	3.7	0.5
5 Type of employer	2	42	40	0	16	4	43	0	0	3.1	1.1
6	67	0	0	33	0	44	3	0	0	4.0	1.4
7	0	0	0	0	0	47	0	0	0	0.0	0.0
8 Job preparation received	83	11	4	2	0	1	46	0	0	4.7	0.6
9	0	100	0	0	0	46	1	0	0	4.0	0.0
10 Are you: enrolled/graduate program	35	16	22	27	0	10	37	0	0	3.6	1.2
11	0	0	0	0	0	47	0	0	0	0.0	0.0
12	0	0	0	0	0	47	0	0	0	0.0	0.0
13	0	0	0	0	0	47	0	0	0	0.0	0.0
14 Employment Status: Full-Time 5	76	11	7	7	0	2	45	0	0	4.6	0.9
15	0	0	0	0	0	47	0	0	0	0.0	0.0
16	0	0	0	0	0	47	0	0	0	0.0	0.0
17	0	0	0	0	0	47	0	0	0	0.0	0.0
18 Unemployment Status:	75	25	0	0	0	43	4	0	0	4.8	0.4
19	100	0	0	0	0	46	1	0	0	5.0	0.0
20 Do you recommend William Carey	98	2	0	0	0	4	43	0	0	5.0	0.2
21	0	0	0	0	0	47	0	0	0	0.0	0.0
22	0	0	0	0	0	47	0	0	0	0.0	0.0
23	0	0	0	0	0	47	0	0	0	0.0	0.0
24 GPA? 3.5-4(5) 2.-2.5(2)	85	7	4	4	0	1	46	0	0	4.7	0.7
25	0	0	0	50	50	45	2	0	0	1.5	0.0
26 Junior College yes(1) no(2)	0	0	0	53	47	9	38	0	0	1.5	0.5
27	0	0	0	0	0	47	0	0	0	0.0	0.0
28	0	0	0	0	0	47	0	0	0	0.0	0.0
29 Instruction in courses (5)Excellent	89	11	0	0	0	0	47	0	0	4.9	0.3
30	80	20	0	0	0	42	5	0	0	4.8	0.4
31 Accessibility of instructors	87	13	0	0	0	1	46	0	0	4.9	0.3
32	0	0	0	0	0	47	0	0	0	0.0	0.0
33 Quality of career counseling	59	36	2	2	0	3	44	0	0	4.5	0.7
34	100	0	0	0	0	46	1	0	0	5.0	0.0
35 Overall academic degree program	91	2	7	0	0	1	46	0	0	4.8	0.5

WILLIAM CAREY UNIVERSITY
GRADUATE FOLLOW-UP REPORT OF 2009 GRADUATES
SUMMARY NEW ORLEANS CAMPUS SUMMARY

Course: ????????????

Class Enrollment: 0 Class Respondents: 21
School: 0 School Respondents: 21

Question		5	4	3	2	1	Omit	Resp	Str	Weak	Mean	S.D.
		Hi	%	%	%	Lo	#	#	%	%		
1		0	0	0	0	100	20	1	0	0	1.0	0.0
2	Active member of a church	0	0	0	37	63	2	19	0	0	1.4	0.5
3		0	0	0	0	0	21	0	0	0	0.0	0.0
4		0	0	0	0	0	21	0	0	0	0.0	0.0
5	Type of employer	0	6	6	0	88	4	17	0	0	1.3	0.8
6		100	0	0	0	0	20	1	0	0	5.0	0.0
7		0	0	0	0	0	21	0	0	0	0.0	0.0
8	Job preparation received	55	30	15	0	0	1	20	0	0	4.4	0.7
9		0	0	0	0	0	21	0	0	0	0.0	0.0
10	Are you: enrolled/graduate program	19	48	19	14	0	0	21	0	0	3.7	0.9
11		0	0	0	0	0	21	0	0	0	0.0	0.0
12		0	0	0	0	0	21	0	0	0	0.0	0.0
13		0	0	0	0	0	21	0	0	0	0.0	0.0
14	Employment Status: Full-Time 5	56	28	6	11	0	3	18	0	0	4.3	1.0
15		0	0	0	0	0	21	0	0	0	0.0	0.0
16		0	0	0	0	0	21	0	0	0	0.0	0.0
17		0	0	0	0	0	21	0	0	0	0.0	0.0
18	Unemployment Status:	50	50	0	0	0	17	4	0	0	4.5	0.5
19		0	0	0	0	0	21	0	0	0	0.0	0.0
20	Do you recommend William Carey	95	5	0	0	0	0	21	0	0	5.0	0.2
21		0	0	0	0	0	21	0	0	0	0.0	0.0
22		0	0	100	0	0	20	1	0	0	3.0	0.0
23		0	0	0	0	0	21	0	0	0	0.0	0.0
24	GPA? 3.5-4(5) 2.-2.5(2)	35	25	40	0	0	1	20	0	0	4.0	0.9
25		0	0	0	0	0	21	0	0	0	0.0	0.0
26	Junior College yes(1) no(2)	0	0	0	53	47	2	19	0	0	1.5	0.5
27		0	0	0	0	0	21	0	0	0	0.0	0.0
28		0	0	0	0	0	21	0	0	0	0.0	0.0
29	Instruction in courses (5)Excellent	62	24	14	0	0	0	21	0	0	4.5	0.7
30		100	0	0	0	0	20	1	0	0	5.0	0.0
31	Accessibility of instructors	76	24	0	0	0	0	21	0	0	4.8	0.4
32		0	100	0	0	0	20	1	0	0	4.0	0.0
33	Quality of career counseling	43	33	24	0	0	0	21	0	0	4.2	0.8
34		0	0	0	0	0	21	0	0	0	0.0	0.0
35	Overall academic degree program	62	29	10	0	0	0	21	0	0	4.5	0.7

WILLIAM CAREY UNIVERSITY
GRADUATE FOLLOW-UP REPORT OF 2009 GRADUATES
SUMMARY TRADITION CAMPUS SUMMARY

Course: ????????????

Class Enrollment:	0	Class Respondents:	115
School:	0	School Respondents:	115

Question		5 Hi	4 %	3 %	2 %	1 Lo	Omit #	Resp #	Str %	Weak %	Mean	S.D.
1		0	0	0	0	0	115	0	0	0	0.0	0.0
2	Active member of a church	0	0	0	28	72	6	109	0	0	1.3	0.4
3		0	0	0	0	0	115	0	0	0	0.0	0.0
4		0	0	0	0	100	114	1	0	0	1.0	0.0
5	Type of employer	2	1	72	0	25	11	104	0	0	2.5	0.9
6		100	0	0	0	0	114	1	0	0	5.0	0.0
7		0	0	0	0	0	115	0	0	0	0.0	0.0
8	Job preparation received	73	25	1	1	0	3	112	0	0	4.7	0.5
9		0	0	100	0	0	114	1	0	0	3.0	0.0
10	Are you: enrolled/graduate program	19	29	6	45	0	5	110	0	0	3.2	1.2
11		0	0	0	0	0	115	0	0	0	0.0	0.0
12		0	0	0	0	0	115	0	0	0	0.0	0.0
13		0	0	0	0	0	115	0	0	0	0.0	0.0
14	Employment Status: Full-Time 5	93	5	2	1	0	8	107	0	0	4.9	0.4
15		0	0	0	0	0	115	0	0	0	0.0	0.0
16		0	0	0	0	0	115	0	0	0	0.0	0.0
17		0	0	0	0	0	115	0	0	0	0.0	0.0
18	Unemployment Status:	25	75	0	0	0	107	8	0	0	4.3	0.4
19		0	0	0	0	0	115	0	0	0	0.0	0.0
20	Do you recommend William Carey	98	2	0	0	0	1	114	0	0	5.0	0.1
21		0	0	0	0	0	115	0	0	0	0.0	0.0
22		0	0	0	0	0	115	0	0	0	0.0	0.0
23		0	0	0	0	0	115	0	0	0	0.0	0.0
24	GPA? 3.5-4(5) 2.-2.5(2)	78	16	5	1	0	1	114	0	0	4.7	0.6
25		0	0	0	0	0	115	0	0	0	0.0	0.0
26	Junior College yes(1) no(2)	1	0	0	71	28	5	110	0	0	1.7	0.5
27		0	0	0	0	0	115	0	0	0	0.0	0.0
28		0	0	0	0	0	115	0	0	0	0.0	0.0
29	Instruction in courses (5)Excellent	82	14	4	0	0	2	113	0	0	4.8	0.5
30		50	50	0	0	0	113	2	0	0	4.5	0.0
31	Accessibility of instructors	81	16	4	0	0	1	114	0	0	4.8	0.5
32		0	100	0	0	0	114	1	0	0	4.0	0.0
33	Quality of career counseling	56	35	6	3	0	12	103	0	0	4.4	0.7
34		0	100	0	0	0	112	3	0	0	4.0	0.0
35	Overall academic degree program	79	20	0	1	0	2	113	0	0	4.8	0.5

WILLIAM CAREY UNIVERSITY
GRADUATE FOLLOW-UP REPORT OF 2009 GRADUATES

Course: 00000000012	Year: 09	Class Enrollment: 0	School Enroll.: 0
Course Desc.: GULFPORT-ART	Semester:	Class Respondents: 2	School Resp.: 181
Instructor:	Inst. No.: 000		

Question	Course											School				
	5	4	3	2	1	Omit	Resp	Str	Weak	Mean	S.D.	%-tile	Str	Weak	Mean	S.D.
	Hi	%	%	%	Lo	#	#	%	%				%	%		
1	0	0	0	0	0	2	0	0	0	0.0	0.0		0	0	2.4	1.8
2 Active member of a church	0	0	0	0	100	1	1	0	0	1.0	0.0	32	0	0	1.3	0.5
3	0	0	0	0	0	2	0	0	0	0.0	0.0		0	0	2.0	0.0
4	0	0	0	0	100	1	1	0	0	1.0	0.0	9	0	0	3.0	1.2
5 Type of employer	0	0	0	0	100	1	1	0	0	1.0	0.0	10	0	0	2.6	1.1
6	0	0	0	0	0	2	0	0	0	0.0	0.0		0	0	4.4	1.2
7	0	0	0	0	0	2	0	0	0	0.0	0.0		0	0	0.0	0.0
8 Job preparation received	100	0	0	0	0	0	2	0	0	5.0	0.0	88	0	0	4.7	0.6
9	0	0	100	0	0	1	1	0	0	3.0	0.0	16	0	0	3.5	0.0
10 Are you: enrolled/graduate program	0	100	0	0	0	1	1	0	0	4.0	0.0	65	0	0	3.4	1.2
11	0	0	0	0	0	2	0	0	0	0.0	0.0		0	0	0.0	0.0
12	0	0	0	0	0	2	0	0	0	0.0	0.0		0	0	0.0	0.0
13	0	0	0	0	0	2	0	0	0	0.0	0.0		0	0	0.0	0.0
14 Employment Status: Full-Time	50	0	0	50	0	0	2	0	0	3.5	0.0	7	0	0	4.7	0.7
15	0	0	0	0	0	2	0	0	0	0.0	0.0		0	0	0.0	0.0
16	0	0	0	0	0	2	0	0	0	0.0	0.0		0	0	0.0	0.0
17	0	0	0	0	0	2	0	0	0	0.0	0.0		0	0	0.0	0.0
18 Unemployment Status:	0	0	0	0	0	2	0	0	0	0.0	0.0		0	0	4.5	0.5
19	0	0	0	0	0	2	0	0	0	0.0	0.0		0	0	5.0	0.0
20 Do you recommend William Carey	100	0	0	0	0	0	2	0	0	5.0	0.0	72	0	0	5.0	0.1
21	0	0	0	0	0	2	0	0	0	0.0	0.0		0	0	0.0	0.0
22	0	0	0	0	0	2	0	0	0	0.0	0.0		0	0	3.0	0.0
23	0	0	0	0	0	2	0	0	0	0.0	0.0		0	0	0.0	0.0
24 GPA? 3.5-4(5) 2.-2.5(2)	0	50	0	50	0	0	2	0	0	3.0	0.0	5	0	0	4.6	0.7
25	0	0	0	0	0	2	0	0	0	0.0	0.0		0	0	2.7	1.7
26 Junior College yes(1) no(2)	0	0	0	50	50	0	2	0	0	1.5	0.0	51	0	0	1.7	0.5
27	0	0	0	0	0	2	0	0	0	0.0	0.0		0	0	0.0	0.0
28	0	0	0	0	0	2	0	0	0	0.0	0.0		0	0	0.0	0.0
29 Instruction in courses (5)Excellent	100	0	0	0	0	0	2	0	0	5.0	0.0	81	0	0	4.8	0.5
30	0	0	0	0	0	2	0	0	0	0.0	0.0		0	0	4.8	0.4
31 Accessibility of instructors	100	0	0	0	0	0	2	0	0	5.0	0.0	94	0	0	4.8	0.5
32	0	0	0	0	0	2	0	0	0	0.0	0.0		0	0	4.5	0.0
33 Quality of career counseling	50	50	0	0	0	0	2	0	0	4.5	0.0	63	0	0	4.4	0.7
34	0	0	0	0	0	2	0	0	0	0.0	0.0		0	0	4.3	0.4
35 Overall academic degree program	50	50	0	0	0	0	2	0	0	4.5	0.0	20	0	0	4.8	0.5

WILLIAM CAREY UNIVERSITY
GRADUATE FOLLOW-UP REPORT OF 2009 GRADUATES

Course: 000000000040	Year: 09	Class Enrollment: 0	School Enroll.: 0
Course Desc.: NEW ORLEANS - BGS	Semester:	Class Respondents: 14	School Resp.: 181
Instructor:	Inst. No.: 000		

Question	Course											School				
	5 Hi	4 %	3 %	2 %	1 Lo	Omit #	Resp #	Str %	Weak %	Mean	S.D.	%- tile	Str %	Weak %	Mean	S.D.
1	0	0	0	0	100	13	1	0	0	1.0	0.0	16	0	0	2.4	1.8
2 Active member of a church	0	0	0	25	75	2	12	0	0	1.3	0.4	44	0	0	1.3	0.5
3	0	0	0	0	0	14	0	0	0	0.0	0.0		0	0	2.0	0.0
4	0	0	0	0	0	14	0	0	0	0.0	0.0		0	0	3.0	1.2
5 Type of employer	0	10	10	0	80	4	10	0	0	1.5	1.0	22	0	0	2.6	1.1
6	100	0	0	0	0	13	1	0	0	5.0	0.0	71	0	0	4.4	1.2
7	0	0	0	0	0	14	0	0	0	0.0	0.0		0	0	0.0	0.0
8 Job preparation received	43	36	21	0	0	0	14	0	0	4.2	0.8	6	0	0	4.7	0.6
9	0	0	0	0	0	14	0	0	0	0.0	0.0		0	0	3.5	0.0
10 Are you: enrolled/graduate program	14	50	21	14	0	0	14	0	0	3.6	0.9	40	0	0	3.4	1.2
11	0	0	0	0	0	14	0	0	0	0.0	0.0		0	0	0.0	0.0
12	0	0	0	0	0	14	0	0	0	0.0	0.0		0	0	0.0	0.0
13	0	0	0	0	0	14	0	0	0	0.0	0.0		0	0	0.0	0.0
14 Employment Status: Full-Time 5	27	45	9	18	0	3	11	0	0	3.8	1.0	17	0	0	4.7	0.7
15	0	0	0	0	0	14	0	0	0	0.0	0.0		0	0	0.0	0.0
16	0	0	0	0	0	14	0	0	0	0.0	0.0		0	0	0.0	0.0
17	0	0	0	0	0	14	0	0	0	0.0	0.0		0	0	0.0	0.0
18 Unemployment Status:	50	50	0	0	0	10	4	0	0	4.5	0.5	58	0	0	4.5	0.5
19	0	0	0	0	0	14	0	0	0	0.0	0.0		0	0	5.0	0.0
20 Do you recommend William Carey	93	7	0	0	0	0	14	0	0	4.9	0.3	29	0	0	5.0	0.1
21	0	0	0	0	0	14	0	0	0	0.0	0.0		0	0	0.0	0.0
22	0	0	100	0	0	13	1	0	0	3.0	0.0	50	0	0	3.0	0.0
23	0	0	0	0	0	14	0	0	0	0.0	0.0		0	0	0.0	0.0
24 GPA? 3.5-4(5) 2.-2.5(2)	8	38	54	0	0	1	13	0	0	3.5	0.6	18	0	0	4.6	0.7
25	0	0	0	0	0	14	0	0	0	0.0	0.0		0	0	2.7	1.7
26 Junior College yes(1) no(2)	0	0	0	46	54	1	13	0	0	1.5	0.5	46	0	0	1.7	0.5
27	0	0	0	0	0	14	0	0	0	0.0	0.0		0	0	0.0	0.0
28	0	0	0	0	0	14	0	0	0	0.0	0.0		0	0	0.0	0.0
29 Instruction in courses (5)Excellent	43	36	21	0	0	0	14	0	0	4.2	0.8	5	0	0	4.8	0.5
30	100	0	0	0	0	13	1	0	0	5.0	0.0	71	0	0	4.8	0.4
31 Accessibility of instructors	71	29	0	0	0	0	14	0	0	4.7	0.5	38	0	0	4.8	0.5
32	0	0	0	0	0	14	0	0	0	0.0	0.0		0	0	4.5	0.0
33 Quality of career counseling	36	29	36	0	0	0	14	0	0	4.0	0.8	22	0	0	4.4	0.7
34	0	0	0	0	0	14	0	0	0	0.0	0.0		0	0	4.3	0.4
35 Overall academic degree program	50	36	14	0	0	0	14	0	0	4.4	0.7	7	0	0	4.8	0.5

WILLIAM CAREY UNIVERSITY
GRADUATE FOLLOW-UP REPORT OF 2009 GRADUATES

Course: 00000000010	Year: 09	Class Enrollment: 0	School Enroll.: 0
Course Desc.: BUSINESS ADMINISTRATION	Semester:	Class Respondents: 13	School Resp.: 181
Instructor:	Inst. No.: 000		

Question	Course												School					
	5	4	3	2	1	Omit	Resp	Str	Weak	Mean	S.D.	%-	Str	Weak	Mean	S.D.		
	Hi	%	%	%	Lo	#	#	%	%			tile	%	%				
1	0	0	0	0	0	13	0	0	0	0.0	0.0		0	0	2.4	1.8		
2	Active member of a church	0	0	0	20	80	3	10	0	0	1.2	0.4	41	0	0	1.3	0.5	
3		0	0	0	0	0	13	0	0	0	0.0	0.0		0	0	2.0	0.0	
4		0	0	0	0	0	13	0	0	0	0.0	0.0		0	0	3.0	1.2	
5	Type of employer	0	9	27	0	64	2	11	0	0	1.8	1.1	32	0	0	2.6	1.1	
6		0	0	0	0	0	13	0	0	0	0.0	0.0		0	0	4.4	1.2	
7		0	0	0	0	0	13	0	0	0	0.0	0.0		0	0	0.0	0.0	
8	Job preparation received	46	46	0	8	0	0	13	0	0	4.3	0.8	11	0	0	4.7	0.6	
9		0	0	0	0	0	13	0	0	0	0.0	0.0		0	0	3.5	0.0	
10	Are you: enrolled/graduate program	33	25	25	17	0	1	12	0	0	3.8	1.1	48	0	0	3.4	1.2	
11		0	0	0	0	0	13	0	0	0	0.0	0.0		0	0	0.0	0.0	
12		0	0	0	0	0	13	0	0	0	0.0	0.0		0	0	0.0	0.0	
13		0	0	0	0	0	13	0	0	0	0.0	0.0		0	0	0.0	0.0	
14	Employment Status: Full-Time	5	70	20	10	0	0	3	10	0	0	4.6	0.7	60	0	0	4.7	0.7
15		0	0	0	0	0	13	0	0	0	0.0	0.0		0	0	0.0	0.0	
16		0	0	0	0	0	13	0	0	0	0.0	0.0		0	0	0.0	0.0	
17		0	0	0	0	0	13	0	0	0	0.0	0.0		0	0	0.0	0.0	
18	Unemployment Status:	33	67	0	0	0	10	3	0	0	4.3	0.5	42	0	0	4.5	0.5	
19		0	0	0	0	0	13	0	0	0	0.0	0.0		0	0	5.0	0.0	
20	Do you recommend William Carey	92	8	0	0	0	0	13	0	0	4.9	0.3	26	0	0	5.0	0.1	
21		0	0	0	0	0	13	0	0	0	0.0	0.0		0	0	0.0	0.0	
22		0	0	0	0	0	13	0	0	0	0.0	0.0		0	0	3.0	0.0	
23		0	0	0	0	0	13	0	0	0	0.0	0.0		0	0	0.0	0.0	
24	GPA? 3.5-4(5) 2.-2.5(2)	38	38	23	0	0	0	13	0	0	4.2	0.8	47	0	0	4.6	0.7	
25		0	0	0	0	0	13	0	0	0	0.0	0.0		0	0	2.7	1.7	
26	Junior College yes(1) no(2)	0	0	0	40	60	3	10	0	0	1.4	0.5	36	0	0	1.7	0.5	
27		0	0	0	0	0	13	0	0	0	0.0	0.0		0	0	0.0	0.0	
28		0	0	0	0	0	13	0	0	0	0.0	0.0		0	0	0.0	0.0	
29	Instruction in courses (5)Excellent	67	25	8	0	0	1	12	0	0	4.6	0.6	31	0	0	4.8	0.5	
30		0	100	0	0	0	12	1	0	0	4.0	0.0	2	0	0	4.8	0.4	
31	Accessibility of instructors	69	31	0	0	0	0	13	0	0	4.7	0.5	33	0	0	4.8	0.5	
32		0	0	0	0	0	13	0	0	0	0.0	0.0		0	0	4.5	0.0	
33	Quality of career counseling	23	46	15	15	0	0	13	0	0	3.8	1.0	10	0	0	4.4	0.7	
34		0	100	0	0	0	12	1	0	0	4.0	0.0	24	0	0	4.3	0.4	
35	Overall academic degree program	58	33	0	8	0	1	12	0	0	4.4	0.9	11	0	0	4.8	0.5	

WILLIAM CAREY UNIVERSITY
GRADUATE FOLLOW-UP REPORT OF 2009 GRADUATES

Course: 00000000024	Year: 09	Class Enrollment: 0	School Enroll.: 0
Course Desc.: HATTIESBURG-EDUCATION	Semester:	Class Respondents: 4	School Resp.: 181
Instructor:	Inst. No.: 000		

Question	Course											School				
	5	4	3	2	1	Omit	Resp	Str	Weak	Mean	S.D.	%-	Str	Weak	Mean	S.D.
	Hi	%	%	%	Lo	#	#	%	%			tile	%	%		
1	100	0	0	0	0	2	2	0	0	5.0	0.0	84	0	0	2.4	1.8
2 Active member of a church	0	0	0	0	100	0	4	0	0	1.0	0.0	32	0	0	1.3	0.5
3	0	0	0	0	0	4	0	0	0	0.0	0.0		0	0	2.0	0.0
4	0	0	0	0	0	4	0	0	0	0.0	0.0		0	0	3.0	1.2
5 Type of employer	0	33	67	0	0	1	3	0	0	3.3	0.5	86	0	0	2.6	1.1
6	0	0	0	0	0	4	0	0	0	0.0	0.0		0	0	4.4	1.2
7	0	0	0	0	0	4	0	0	0	0.0	0.0		0	0	0.0	0.0
8 Job preparation received	67	33	0	0	0	1	3	0	0	4.7	0.5	51	0	0	4.7	0.6
9	0	0	0	0	0	4	0	0	0	0.0	0.0		0	0	3.5	0.0
10 Are you: enrolled/graduate program	25	25	50	0	0	0	4	0	0	3.8	0.8	48	0	0	3.4	1.2
11	0	0	0	0	0	4	0	0	0	0.0	0.0		0	0	0.0	0.0
12	0	0	0	0	0	4	0	0	0	0.0	0.0		0	0	0.0	0.0
13	0	0	0	0	0	4	0	0	0	0.0	0.0		0	0	0.0	0.0
14 Employment Status: Full-Time	5	100	0	0	0	0	4	0	0	5.0	0.0	81	0	0	4.7	0.7
15	0	0	0	0	0	4	0	0	0	0.0	0.0		0	0	0.0	0.0
16	0	0	0	0	0	4	0	0	0	0.0	0.0		0	0	0.0	0.0
17	0	0	0	0	0	4	0	0	0	0.0	0.0		0	0	0.0	0.0
18 Unemployment Status:	0	0	0	0	0	4	0	0	0	0.0	0.0		0	0	4.5	0.5
19	0	0	0	0	0	4	0	0	0	0.0	0.0		0	0	5.0	0.0
20 Do you recommend William Carey	100	0	0	0	0	0	4	0	0	5.0	0.0	72	0	0	5.0	0.1
21	0	0	0	0	0	4	0	0	0	0.0	0.0		0	0	0.0	0.0
22	0	0	0	0	0	4	0	0	0	0.0	0.0		0	0	3.0	0.0
23	0	0	0	0	0	4	0	0	0	0.0	0.0		0	0	0.0	0.0
24 GPA? 3.5-4(5) 2.-2.5(2)	100	0	0	0	0	1	3	0	0	5.0	0.0	85	0	0	4.6	0.7
25	0	0	0	0	0	4	0	0	0	0.0	0.0		0	0	2.7	1.7
26 Junior College yes(1) no(2)	0	0	0	0	100	0	4	0	0	1.0	0.0	3	0	0	1.7	0.5
27	0	0	0	0	0	4	0	0	0	0.0	0.0		0	0	0.0	0.0
28	0	0	0	0	0	4	0	0	0	0.0	0.0		0	0	0.0	0.0
29 Instruction in courses (5)Excellent	100	0	0	0	0	0	4	0	0	5.0	0.0	81	0	0	4.8	0.5
30	0	0	0	0	0	4	0	0	0	0.0	0.0		0	0	4.8	0.4
31 Accessibility of instructors	75	25	0	0	0	0	4	0	0	4.8	0.4	47	0	0	4.8	0.5
32	0	0	0	0	0	4	0	0	0	0.0	0.0		0	0	4.5	0.0
33 Quality of career counseling	25	75	0	0	0	0	4	0	0	4.3	0.4	42	0	0	4.4	0.7
34	0	0	0	0	0	4	0	0	0	0.0	0.0		0	0	4.3	0.4
35 Overall academic degree program	100	0	0	0	0	0	4	0	0	5.0	0.0	91	0	0	4.8	0.5

WILLIAM CAREY UNIVERSITY
GRADUATE FOLLOW-UP REPORT OF 2009 GRADUATES

Course: 00000000020 Year: 09 Class Enrollment: 0 School Enroll.: 0
Course Desc.: GULFPOR- ELEMENTARY EDUCATION Semester: Class Respondents: 15 School Resp.: 181
Instructor: Inst. No.: 000

Question	Course											School				
	5 Hi	4 %	3 %	2 %	1 Lo	Omit #	Resp #	Str %	Weak %	Mean	S.D.	%- tile	Str %	Weak %	Mean	S.D.
1	0	0	0	0	0	15	0	0	0	0.0	0.0		0	0	2.4	1.8
2 Active member of a church	0	0	0	29	71	1	14	0	0	1.3	0.5	46	0	0	1.3	0.5
3	0	0	0	0	0	15	0	0	0	0.0	0.0		0	0	2.0	0.0
4	0	0	0	0	0	15	0	0	0	0.0	0.0		0	0	3.0	1.2
5 Type of employer	0	0	93	0	7	1	14	0	0	2.9	0.5	72	0	0	2.6	1.1
6	0	0	0	0	0	15	0	0	0	0.0	0.0		0	0	4.4	1.2
7	0	0	0	0	0	15	0	0	0	0.0	0.0		0	0	0.0	0.0
8 Job preparation received	79	21	0	0	0	1	14	0	0	4.8	0.4	67	0	0	4.7	0.6
9	0	0	0	0	0	15	0	0	0	0.0	0.0		0	0	3.5	0.0
10 Are you: enrolled/graduate program	36	43	0	21	0	1	14	0	0	3.9	1.1	60	0	0	3.4	1.2
11	0	0	0	0	0	15	0	0	0	0.0	0.0		0	0	0.0	0.0
12	0	0	0	0	0	15	0	0	0	0.0	0.0		0	0	0.0	0.0
13	0	0	0	0	0	15	0	0	0	0.0	0.0		0	0	0.0	0.0
14 Employment Status: Full-Time 5	93	7	0	0	0	1	14	0	0	4.9	0.3	78	0	0	4.7	0.7
15	0	0	0	0	0	15	0	0	0	0.0	0.0		0	0	0.0	0.0
16	0	0	0	0	0	15	0	0	0	0.0	0.0		0	0	0.0	0.0
17	0	0	0	0	0	15	0	0	0	0.0	0.0		0	0	0.0	0.0
18 Unemployment Status:	0	100	0	0	0	14	1	0	0	4.0	0.0	15	0	0	4.5	0.5
19	0	0	0	0	0	15	0	0	0	0.0	0.0		0	0	5.0	0.0
20 Do you recommend William Carey	100	0	0	0	0	1	14	0	0	5.0	0.0	72	0	0	5.0	0.1
21	0	0	0	0	0	15	0	0	0	0.0	0.0		0	0	0.0	0.0
22	0	0	0	0	0	15	0	0	0	0.0	0.0		0	0	3.0	0.0
23	0	0	0	0	0	15	0	0	0	0.0	0.0		0	0	0.0	0.0
24 GPA? 3.5-4(5) 2.-2.5(2)	71	29	0	0	0	1	14	0	0	4.7	0.5	74	0	0	4.6	0.7
25	0	0	0	0	0	15	0	0	0	0.0	0.0		0	0	2.7	1.7
26 Junior College yes(1) no(2)	7	0	0	36	57	1	14	0	0	1.6	1.0	72	0	0	1.7	0.5
27	0	0	0	0	0	15	0	0	0	0.0	0.0		0	0	0.0	0.0
28	0	0	0	0	0	15	0	0	0	0.0	0.0		0	0	0.0	0.0
29 Instruction in courses (5)Excellent	64	36	0	0	0	1	14	0	0	4.6	0.5	39	0	0	4.8	0.5
30	0	0	0	0	0	15	0	0	0	0.0	0.0		0	0	4.8	0.4
31 Accessibility of instructors	86	14	0	0	0	1	14	0	0	4.9	0.3	74	0	0	4.8	0.5
32	0	0	0	0	0	15	0	0	0	0.0	0.0		0	0	4.5	0.0
33 Quality of career counseling	50	42	8	0	0	3	12	0	0	4.4	0.6	56	0	0	4.4	0.7
34	0	0	0	0	0	15	0	0	0	0.0	0.0		0	0	4.3	0.4
35 Overall academic degree program	79	21	0	0	0	1	14	0	0	4.8	0.4	65	0	0	4.8	0.5

WILLIAM CAREY UNIVERSITY
GRADUATE FOLLOW-UP REPORT OF 2009 GRADUATES

Course: 00000000011	Year: 09	Class Enrollment: 0	School Enroll.: 0
Course Desc.: HATTIESBURG-ENGLISH	Semester:	Class Respondents: 6	School Resp.: 181
Instructor:	Inst. No.: 000		

Question	Course											School				
	5	4	3	2	1	Omit	Resp	Str	Weak	Mean	S.D.	%-	Str	Weak	Mean	S.D.
	Hi	%	%	%	Lo	#	#	%	%			tile	%	%		
1	100	0	0	0	0	5	1	0	0	5.0	0.0	84	0	0	2.4	1.8
2 Active member of a church	0	0	0	0	100	1	5	0	0	1.0	0.0	32	0	0	1.3	0.5
3	0	0	0	0	0	6	0	0	0	0.0	0.0		0	0	2.0	0.0
4	0	100	0	0	0	5	1	0	0	4.0	0.0	81	0	0	3.0	1.2
5 Type of employer	0	80	20	0	0	1	5	0	0	3.8	0.4	94	0	0	2.6	1.1
6	0	0	0	100	0	5	1	0	0	2.0	0.0	5	0	0	4.4	1.2
7	0	0	0	0	0	6	0	0	0	0.0	0.0		0	0	0.0	0.0
8 Job preparation received	67	17	0	17	0	0	6	0	0	4.3	1.1	13	0	0	4.7	0.6
9	0	0	0	0	0	6	0	0	0	0.0	0.0		0	0	3.5	0.0
10 Are you: enrolled/graduate program	50	33	0	17	0	0	6	0	0	4.2	1.1	75	0	0	3.4	1.2
11	0	0	0	0	0	6	0	0	0	0.0	0.0		0	0	0.0	0.0
12	0	0	0	0	0	6	0	0	0	0.0	0.0		0	0	0.0	0.0
13	0	0	0	0	0	6	0	0	0	0.0	0.0		0	0	0.0	0.0
14 Employment Status: Full-Time 5	50	17	17	17	0	0	6	0	0	4.0	1.2	25	0	0	4.7	0.7
15	0	0	0	0	0	6	0	0	0	0.0	0.0		0	0	0.0	0.0
16	0	0	0	0	0	6	0	0	0	0.0	0.0		0	0	0.0	0.0
17	0	0	0	0	0	6	0	0	0	0.0	0.0		0	0	0.0	0.0
18 Unemployment Status:	0	0	0	0	0	6	0	0	0	0.0	0.0		0	0	4.5	0.5
19	0	0	0	0	0	6	0	0	0	0.0	0.0		0	0	5.0	0.0
20 Do you recommend William Carey	83	17	0	0	0	0	6	0	0	4.8	0.4	2	0	0	5.0	0.1
21	0	0	0	0	0	6	0	0	0	0.0	0.0		0	0	0.0	0.0
22	0	0	0	0	0	6	0	0	0	0.0	0.0		0	0	3.0	0.0
23	0	0	0	0	0	6	0	0	0	0.0	0.0		0	0	0.0	0.0
24 GPA? 3.5-4(5) 2.-2.5(2)	67	17	17	0	0	0	6	0	0	4.5	0.8	64	0	0	4.6	0.7
25	0	0	0	0	100	5	1	0	0	1.0	0.0	17	0	0	2.7	1.7
26 Junior College yes(1) no(2)	0	0	0	60	40	1	5	0	0	1.6	0.5	66	0	0	1.7	0.5
27	0	0	0	0	0	6	0	0	0	0.0	0.0		0	0	0.0	0.0
28	0	0	0	0	0	6	0	0	0	0.0	0.0		0	0	0.0	0.0
29 Instruction in courses (5)Excellent	67	33	0	0	0	0	6	0	0	4.7	0.5	42	0	0	4.8	0.5
30	100	0	0	0	0	5	1	0	0	5.0	0.0	71	0	0	4.8	0.4
31 Accessibility of instructors	67	33	0	0	0	0	6	0	0	4.7	0.5	27	0	0	4.8	0.5
32	0	0	0	0	0	6	0	0	0	0.0	0.0		0	0	4.5	0.0
33 Quality of career counseling	50	33	0	17	0	0	6	0	0	4.2	1.1	35	0	0	4.4	0.7
34	100	0	0	0	0	5	1	0	0	5.0	0.0	92	0	0	4.3	0.4
35 Overall academic degree program	80	0	20	0	0	1	5	0	0	4.6	0.8	34	0	0	4.8	0.5

WILLIAM CAREY UNIVERSITY
GRADUATE FOLLOW-UP REPORT OF 2009 GRADUATES

Course: 000000000005	Year: 09	Class Enrollment: 0	School Enroll.: 0
Course Desc.: HATTIESBURG-NURSING	Semester:	Class Respondents: 3	School Resp.: 181
Instructor:	Inst. No.: 000		

Question	Course											School				
	5	4	3	2	1	Omit	Resp	Str	Weak	Mean	S.D.	%-	Str	Weak	Mean	S.D.
	Hi	%	%	%	Lo	#	#	%	%			tile	%	%		
1	0	0	0	0	100	2	1	0	0	1.0	0.0	16	0	0	2.4	1.8
2 Active member of a church	0	100	0	0	0	2	1	0	0	4.0	0.0	99	0	0	1.3	0.5
3	0	0	0	0	0	3	0	0	0	0.0	0.0		0	0	2.0	0.0
4	0	0	0	0	0	3	0	0	0	0.0	0.0		0	0	3.0	1.2
5 Type of employer	0	0	0	0	100	1	2	0	0	1.0	0.0	10	0	0	2.6	1.1
6	0	0	0	0	0	3	0	0	0	0.0	0.0		0	0	4.4	1.2
7	0	0	0	0	0	3	0	0	0	0.0	0.0		0	0	0.0	0.0
8 Job preparation received	100	0	0	0	0	1	2	0	0	5.0	0.0	88	0	0	4.7	0.6
9	0	0	0	0	0	3	0	0	0	0.0	0.0		0	0	3.5	0.0
10 Are you: enrolled/graduate program	50	0	0	50	0	1	2	0	0	3.5	0.0	30	0	0	3.4	1.2
11	0	0	0	0	0	3	0	0	0	0.0	0.0		0	0	0.0	0.0
12	0	0	0	0	0	3	0	0	0	0.0	0.0		0	0	0.0	0.0
13	0	0	0	0	0	3	0	0	0	0.0	0.0		0	0	0.0	0.0
14 Employment Status: Full-Time	50	0	50	0	0	1	2	0	0	4.0	0.0	25	0	0	4.7	0.7
15	0	0	0	0	0	3	0	0	0	0.0	0.0		0	0	0.0	0.0
16	0	0	0	0	0	3	0	0	0	0.0	0.0		0	0	0.0	0.0
17	0	0	0	0	0	3	0	0	0	0.0	0.0		0	0	0.0	0.0
18 Unemployment Status:	0	0	0	0	0	3	0	0	0	0.0	0.0		0	0	4.5	0.5
19	0	0	0	0	0	3	0	0	0	0.0	0.0		0	0	5.0	0.0
20 Do you recommend William Carey	100	0	0	0	0	1	2	0	0	5.0	0.0	72	0	0	5.0	0.1
21	0	0	0	0	0	3	0	0	0	0.0	0.0		0	0	0.0	0.0
22	0	0	0	0	0	3	0	0	0	0.0	0.0		0	0	3.0	0.0
23	0	0	0	0	0	3	0	0	0	0.0	0.0		0	0	0.0	0.0
24 GPA? 3.5-4(5) 2.-2.5(2)	50	50	0	0	0	1	2	0	0	4.5	0.0	64	0	0	4.6	0.7
25	100	0	0	0	0	2	1	0	0	5.0	0.0	91	0	0	2.7	1.7
26 Junior College yes(1) no(2)	0	0	0	50	50	1	2	0	0	1.5	0.0	51	0	0	1.7	0.5
27	0	0	0	0	0	3	0	0	0	0.0	0.0		0	0	0.0	0.0
28	0	0	0	0	0	3	0	0	0	0.0	0.0		0	0	0.0	0.0
29 Instruction in courses (5)Excellent	100	0	0	0	0	1	2	0	0	5.0	0.0	81	0	0	4.8	0.5
30	100	0	0	0	0	2	1	0	0	5.0	0.0	71	0	0	4.8	0.4
31 Accessibility of instructors	50	50	0	0	0	1	2	0	0	4.5	0.0	4	0	0	4.8	0.5
32	100	0	0	0	0	2	1	0	0	5.0	0.0	84	0	0	4.5	0.0
33 Quality of career counseling	100	0	0	0	0	2	1	0	0	5.0	0.0	93	0	0	4.4	0.7
34	0	0	0	0	0	3	0	0	0	0.0	0.0		0	0	4.3	0.4
35 Overall academic degree program	0	0	0	0	0	3	0	0	0	0.0	0.0		0	0	4.8	0.5

WILLIAM CAREY UNIVERSITY
GRADUATE FOLLOW-UP REPORT OF 2009 GRADUATES

Course: 000000000007	Year: 09	Class Enrollment: 0	School Enroll.: 0
Course Desc.: NEW ORLEANS-NURSING	Semester:	Class Respondents: 7	School Resp.: 181
Instructor:	Inst. No.: 000		

Question	Course											School				
	5 Hi	4 %	3 %	2 %	1 Lo	Omit #	Resp #	Str %	Weak %	Mean	S.D.	%- tile	Str %	Weak %	Mean	S.D.
1	0	0	0	0	0	7	0	0	0	0.0	0.0		0	0	2.4	1.8
2 Active member of a church	0	0	0	57	43	0	7	0	0	1.6	0.5	60	0	0	1.3	0.5
3	0	0	0	0	0	7	0	0	0	0.0	0.0		0	0	2.0	0.0
4	0	0	0	0	0	7	0	0	0	0.0	0.0		0	0	3.0	1.2
5 Type of employer	0	0	0	0	100	0	7	0	0	1.0	0.0	10	0	0	2.6	1.1
6	0	0	0	0	0	7	0	0	0	0.0	0.0		0	0	4.4	1.2
7	0	0	0	0	0	7	0	0	0	0.0	0.0		0	0	0.0	0.0
8 Job preparation received	83	17	0	0	0	1	6	0	0	4.8	0.4	73	0	0	4.7	0.6
9	0	0	0	0	0	7	0	0	0	0.0	0.0		0	0	3.5	0.0
10 Are you: enrolled/graduate program	29	43	14	14	0	0	7	0	0	3.9	1.0	54	0	0	3.4	1.2
11	0	0	0	0	0	7	0	0	0	0.0	0.0		0	0	0.0	0.0
12	0	0	0	0	0	7	0	0	0	0.0	0.0		0	0	0.0	0.0
13	0	0	0	0	0	7	0	0	0	0.0	0.0		0	0	0.0	0.0
14 Employment Status: Full-Time 5	100	0	0	0	0	0	7	0	0	5.0	0.0	81	0	0	4.7	0.7
15	0	0	0	0	0	7	0	0	0	0.0	0.0		0	0	0.0	0.0
16	0	0	0	0	0	7	0	0	0	0.0	0.0		0	0	0.0	0.0
17	0	0	0	0	0	7	0	0	0	0.0	0.0		0	0	0.0	0.0
18 Unemployment Status:	0	0	0	0	0	7	0	0	0	0.0	0.0		0	0	4.5	0.5
19	0	0	0	0	0	7	0	0	0	0.0	0.0		0	0	5.0	0.0
20 Do you recommend William Carey	100	0	0	0	0	0	7	0	0	5.0	0.0	72	0	0	5.0	0.1
21	0	0	0	0	0	7	0	0	0	0.0	0.0		0	0	0.0	0.0
22	0	0	0	0	0	7	0	0	0	0.0	0.0		0	0	3.0	0.0
23	0	0	0	0	0	7	0	0	0	0.0	0.0		0	0	0.0	0.0
24 GPA? 3.5-4(5) 2.-2.5(2)	86	0	14	0	0	0	7	0	0	4.7	0.7	74	0	0	4.6	0.7
25	0	0	0	0	0	7	0	0	0	0.0	0.0		0	0	2.7	1.7
26 Junior College yes(1) no(2)	0	0	0	67	33	1	6	0	0	1.7	0.5	75	0	0	1.7	0.5
27	0	0	0	0	0	7	0	0	0	0.0	0.0		0	0	0.0	0.0
28	0	0	0	0	0	7	0	0	0	0.0	0.0		0	0	0.0	0.0
29 Instruction in courses (5)Excellent	100	0	0	0	0	0	7	0	0	5.0	0.0	81	0	0	4.8	0.5
30	0	0	0	0	0	7	0	0	0	0.0	0.0		0	0	4.8	0.4
31 Accessibility of instructors	86	14	0	0	0	0	7	0	0	4.9	0.3	74	0	0	4.8	0.5
32	0	100	0	0	0	6	1	0	0	4.0	0.0	16	0	0	4.5	0.0
33 Quality of career counseling	57	43	0	0	0	0	7	0	0	4.6	0.5	69	0	0	4.4	0.7
34	0	0	0	0	0	7	0	0	0	0.0	0.0		0	0	4.3	0.4
35 Overall academic degree program	86	14	0	0	0	0	7	0	0	4.9	0.3	76	0	0	4.8	0.5

WILLIAM CAREY UNIVERSITY
GRADUATE FOLLOW-UP REPORT OF 2009 GRADUATES

Course: 00000000008 Year: 09 Class Enrollment: 0 School Enroll.: 0
 Course Desc.: TRADITION-NURSING Semester: Class Respondents: 6 School Resp.: 181
 Instructor: Inst. No.: 000

Question	Course											School					
	5	4	3	2	1	Omit	Resp	Str	Weak	Mean	S.D.	%-	Str	Weak	Mean	S.D.	
	Hi	%	%	%	Lo	#	#	%	%			tile	%	%			
1	0	0	0	0	0	6	0	0	0	0.0	0.0		0	0	2.4	1.8	
2	Active member of a church	0	0	0	0	100	1	5	0	0	1.0	0.0	32	0	0	1.3	0.5
3		0	0	0	0	0	6	0	0	0	0.0	0.0		0	0	2.0	0.0
4		0	0	0	0	0	6	0	0	0	0.0	0.0		0	0	3.0	1.2
5	Type of employer	0	25	25	0	50	2	4	0	0	2.3	1.3	49	0	0	2.6	1.1
6		0	0	0	0	0	6	0	0	0	0.0	0.0		0	0	4.4	1.2
7		0	0	0	0	0	6	0	0	0	0.0	0.0		0	0	0.0	0.0
8	Job preparation received	17	83	0	0	0	0	6	0	0	4.2	0.4	5	0	0	4.7	0.6
9		0	0	0	0	0	6	0	0	0	0.0	0.0		0	0	3.5	0.0
10	Are you: enrolled/graduate program	17	33	33	17	0	0	6	0	0	3.5	1.0	30	0	0	3.4	1.2
11		0	0	0	0	0	6	0	0	0	0.0	0.0		0	0	0.0	0.0
12		0	0	0	0	0	6	0	0	0	0.0	0.0		0	0	0.0	0.0
13		0	0	0	0	0	6	0	0	0	0.0	0.0		0	0	0.0	0.0
14	Employment Status: Full-Time 5	80	0	20	0	0	1	5	0	0	4.6	0.8	60	0	0	4.7	0.7
15		0	0	0	0	0	6	0	0	0	0.0	0.0		0	0	0.0	0.0
16		0	0	0	0	0	6	0	0	0	0.0	0.0		0	0	0.0	0.0
17		0	0	0	0	0	6	0	0	0	0.0	0.0		0	0	0.0	0.0
18	Unemployment Status:	0	100	0	0	0	5	1	0	0	4.0	0.0	15	0	0	4.5	0.5
19		0	0	0	0	0	6	0	0	0	0.0	0.0		0	0	5.0	0.0
20	Do you recommend William Carey	83	17	0	0	0	0	6	0	0	4.8	0.4	2	0	0	5.0	0.1
21		0	0	0	0	0	6	0	0	0	0.0	0.0		0	0	0.0	0.0
22		0	0	0	0	0	6	0	0	0	0.0	0.0		0	0	3.0	0.0
23		0	0	0	0	0	6	0	0	0	0.0	0.0		0	0	0.0	0.0
24	GPA? 3.5-4(5) 2.-2.5(2)	33	17	50	0	0	0	6	0	0	3.8	0.9	31	0	0	4.6	0.7
25		0	0	0	0	0	6	0	0	0	0.0	0.0		0	0	2.7	1.7
26	Junior College yes(1) no(2)	0	0	0	33	67	0	6	0	0	1.3	0.5	27	0	0	1.7	0.5
27		0	0	0	0	0	6	0	0	0	0.0	0.0		0	0	0.0	0.0
28		0	0	0	0	0	6	0	0	0	0.0	0.0		0	0	0.0	0.0
29	Instruction in courses (5)Excellent	33	33	33	0	0	0	6	0	0	4.0	0.8	1	0	0	4.8	0.5
30		0	0	0	0	0	6	0	0	0	0.0	0.0		0	0	4.8	0.4
31	Accessibility of instructors	83	0	17	0	0	0	6	0	0	4.7	0.7	27	0	0	4.8	0.5
32		0	0	0	0	0	6	0	0	0	0.0	0.0		0	0	4.5	0.0
33	Quality of career counseling	0	50	33	17	0	0	6	0	0	3.3	0.7	2	0	0	4.4	0.7
34		0	0	0	0	0	6	0	0	0	0.0	0.0		0	0	4.3	0.4
35	Overall academic degree program	33	67	0	0	0	0	6	0	0	4.3	0.5	6	0	0	4.8	0.5

WILLIAM CAREY UNIVERSITY
GRADUATE FOLLOW-UP REPORT OF 2009 GRADUATES

Course: 000000000009 Year: 09 Class Enrollment: 0 School Enroll.: 0
 Course Desc.: HATTIESBURG-PSYCHOLOGY Semester: Class Respondents: 3 School Resp.: 181
 Instructor: Inst. No.: 000

Question	Course											School				
	5 Hi	4 %	3 %	2 %	1 Lo	Omit #	Resp #	Str %	Weak %	Mean	S.D.	%- tile	Str %	Weak %	Mean	S.D.
1	0	0	0	0	0	3	0	0	0	0.0	0.0		0	0	2.4	1.8
2 Active member of a church	0	0	0	0	100	2	1	0	0	1.0	0.0	32	0	0	1.3	0.5
3	0	0	0	0	0	3	0	0	0	0.0	0.0		0	0	2.0	0.0
4	0	0	0	0	0	3	0	0	0	0.0	0.0		0	0	3.0	1.2
5 Type of employer	0	50	0	0	50	1	2	0	0	2.5	0.0	59	0	0	2.6	1.1
6	0	0	0	0	0	3	0	0	0	0.0	0.0		0	0	4.4	1.2
7	0	0	0	0	0	3	0	0	0	0.0	0.0		0	0	0.0	0.0
8 Job preparation received	67	33	0	0	0	0	3	0	0	4.7	0.5	51	0	0	4.7	0.6
9	0	0	0	0	0	3	0	0	0	0.0	0.0		0	0	3.5	0.0
10 Are you: enrolled/graduate program	67	33	0	0	0	0	3	0	0	4.7	0.5	94	0	0	3.4	1.2
11	0	0	0	0	0	3	0	0	0	0.0	0.0		0	0	0.0	0.0
12	0	0	0	0	0	3	0	0	0	0.0	0.0		0	0	0.0	0.0
13	0	0	0	0	0	3	0	0	0	0.0	0.0		0	0	0.0	0.0
14 Employment Status: Full-Time 5	100	0	0	0	0	2	1	0	0	5.0	0.0	81	0	0	4.7	0.7
15	0	0	0	0	0	3	0	0	0	0.0	0.0		0	0	0.0	0.0
16	0	0	0	0	0	3	0	0	0	0.0	0.0		0	0	0.0	0.0
17	0	0	0	0	0	3	0	0	0	0.0	0.0		0	0	0.0	0.0
18 Unemployment Status: 100	0	0	0	0	0	2	1	0	0	5.0	0.0	93	0	0	4.5	0.5
19	0	0	0	0	0	3	0	0	0	0.0	0.0		0	0	5.0	0.0
20 Do you recommend William Carey	0	0	0	0	0	3	0	0	0	0.0	0.0		0	0	5.0	0.1
21	0	0	0	0	0	3	0	0	0	0.0	0.0		0	0	0.0	0.0
22	0	0	0	0	0	3	0	0	0	0.0	0.0		0	0	3.0	0.0
23	0	0	0	0	0	3	0	0	0	0.0	0.0		0	0	0.0	0.0
24 GPA? 3.5-4 (5) 2.-2.5 (2)	67	0	0	33	0	0	3	0	0	4.0	1.4	39	0	0	4.6	0.7
25	0	0	0	0	0	3	0	0	0	0.0	0.0		0	0	2.7	1.7
26 Junior College yes(1) no(2)	0	0	0	0	0	3	0	0	0	0.0	0.0		0	0	1.7	0.5
27	0	0	0	0	0	3	0	0	0	0.0	0.0		0	0	0.0	0.0
28	0	0	0	0	0	3	0	0	0	0.0	0.0		0	0	0.0	0.0
29 Instruction in courses (5)Excellent	67	33	0	0	0	0	3	0	0	4.7	0.5	42	0	0	4.8	0.5
30	0	0	0	0	0	3	0	0	0	0.0	0.0		0	0	4.8	0.4
31 Accessibility of instructors	67	33	0	0	0	0	3	0	0	4.7	0.5	27	0	0	4.8	0.5
32	0	0	0	0	0	3	0	0	0	0.0	0.0		0	0	4.5	0.0
33 Quality of career counseling	33	67	0	0	0	0	3	0	0	4.3	0.5	50	0	0	4.4	0.7
34	0	0	0	0	0	3	0	0	0	0.0	0.0		0	0	4.3	0.4
35 Overall academic degree program	67	33	0	0	0	0	3	0	0	4.7	0.5	45	0	0	4.8	0.5

WILLIAM CAREY UNIVERSITY
GRADUATE FOLLOW-UP REPORT OF 2009 GRADUATES

Course: 000000000025	Year: 09	Class Enrollment: 0	School Enroll.: 0
Course Desc.: HATTIESBURG-RELIGION	Semester:	Class Respondents: 2	School Resp.: 181
Instructor:	Inst. No.: 000		

Question	Course											School				
	5	4	3	2	1	Omit	Resp	Str	Weak	Mean	S.D.	%-	Str	Weak	Mean	S.D.
	Hi	%	%	%	Lo	#	#	%	%			tile	%	%		
1	100	0	0	0	0	1	1	0	0	5.0	0.0	84	0	0	2.4	1.8
2 Active member of a church	0	0	0	0	100	1	1	0	0	1.0	0.0	32	0	0	1.3	0.5
3	0	0	0	0	0	2	0	0	0	0.0	0.0		0	0	2.0	0.0
4	0	0	0	0	0	2	0	0	0	0.0	0.0		0	0	3.0	1.2
5 Type of employer	0	50	50	0	0	0	2	0	0	3.5	0.0	89	0	0	2.6	1.1
6	0	0	0	0	0	2	0	0	0	0.0	0.0		0	0	4.4	1.2
7	0	0	0	0	0	2	0	0	0	0.0	0.0		0	0	0.0	0.0
8 Job preparation received	100	0	0	0	0	0	2	0	0	5.0	0.0	88	0	0	4.7	0.6
9	0	0	0	0	0	2	0	0	0	0.0	0.0		0	0	3.5	0.0
10 Are you: enrolled/graduate program	100	0	0	0	0	0	2	0	0	5.0	0.0	98	0	0	3.4	1.2
11	0	0	0	0	0	2	0	0	0	0.0	0.0		0	0	0.0	0.0
12	0	0	0	0	0	2	0	0	0	0.0	0.0		0	0	0.0	0.0
13	0	0	0	0	0	2	0	0	0	0.0	0.0		0	0	0.0	0.0
14 Employment Status: Full-Time 5	0	50	0	50	0	0	2	0	0	3.0	0.0	2	0	0	4.7	0.7
15	0	0	0	0	0	2	0	0	0	0.0	0.0		0	0	0.0	0.0
16	0	0	0	0	0	2	0	0	0	0.0	0.0		0	0	0.0	0.0
17	0	0	0	0	0	2	0	0	0	0.0	0.0		0	0	0.0	0.0
18 Unemployment Status:	0	100	0	0	0	1	1	0	0	4.0	0.0	15	0	0	4.5	0.5
19	0	0	0	0	0	2	0	0	0	0.0	0.0		0	0	5.0	0.0
20 Do you recommend William Carey	100	0	0	0	0	0	2	0	0	5.0	0.0	72	0	0	5.0	0.1
21	0	0	0	0	0	2	0	0	0	0.0	0.0		0	0	0.0	0.0
22	0	0	0	0	0	2	0	0	0	0.0	0.0		0	0	3.0	0.0
23	0	0	0	0	0	2	0	0	0	0.0	0.0		0	0	0.0	0.0
24 GPA? 3.5-4(5) 2.-2.5(2)	0	0	50	50	0	0	2	0	0	2.5	0.0	2	0	0	4.6	0.7
25	0	0	0	0	0	2	0	0	0	0.0	0.0		0	0	2.7	1.7
26 Junior College yes(1) no(2)	0	0	0	0	100	0	2	0	0	1.0	0.0	3	0	0	1.7	0.5
27	0	0	0	0	0	2	0	0	0	0.0	0.0		0	0	0.0	0.0
28	0	0	0	0	0	2	0	0	0	0.0	0.0		0	0	0.0	0.0
29 Instruction in courses (5)Excellent	100	0	0	0	0	0	2	0	0	5.0	0.0	81	0	0	4.8	0.5
30	0	0	0	0	0	2	0	0	0	0.0	0.0		0	0	4.8	0.4
31 Accessibility of instructors	100	0	0	0	0	0	2	0	0	5.0	0.0	94	0	0	4.8	0.5
32	0	0	0	0	0	2	0	0	0	0.0	0.0		0	0	4.5	0.0
33 Quality of career counseling	100	0	0	0	0	1	1	0	0	5.0	0.0	93	0	0	4.4	0.7
34	0	0	0	0	0	2	0	0	0	0.0	0.0		0	0	4.3	0.4
35 Overall academic degree program	100	0	0	0	0	0	2	0	0	5.0	0.0	91	0	0	4.8	0.5

WILLIAM CAREY UNIVERSITY
GRADUATE FOLLOW-UP REPORT OF 2009 GRADUATES

Course: 00000000013	Year: 09	Class Enrollment: 0	School Enroll.: 0
Course Desc.: MASTER OF BUSINESS ADMINISTRATION	Semester:	Class Respondents: 9	School Resp.: 181
Instructor:	Inst. No.: 000		

Question	Course											School						
	5 Hi	4 %	3 %	2 %	1 Lo	Omit #	Resp #	Str %	Weak %	Mean	S.D.	%- tile	Str %	Weak %	Mean	S.D.		
1	0	0	0	0	0	9	0	0	0	0.0	0.0		0	0	2.4	1.8		
2	Active member of a church		0	0	0	44	56	0	9	0	0	1.4	0.5	53	0	0	1.3	0.5
3	0	0	0	0	0	9	0	0	0	0.0	0.0		0	0	2.0	0.0		
4	0	0	0	0	0	9	0	0	0	0.0	0.0		0	0	3.0	1.2		
5	Type of employer		0	0	13	0	88	1	8	0	0	1.3	0.7	15	0	0	2.6	1.1
6	100	0	0	0	0	8	1	0	0	5.0	0.0	71	0	0	4.4	1.2		
7	0	0	0	0	0	9	0	0	0	0.0	0.0		0	0	0.0	0.0		
8	Job preparation received		63	38	0	0	0	1	8	0	0	4.6	0.5	46	0	0	4.7	0.6
9	0	0	0	0	0	9	0	0	0	0.0	0.0		0	0	3.5	0.0		
10	Are you: enrolled/graduate program		29	14	14	43	0	2	7	0	0	3.3	1.3	18	0	0	3.4	1.2
11	0	0	0	0	0	9	0	0	0	0.0	0.0		0	0	0.0	0.0		
12	0	0	0	0	0	9	0	0	0	0.0	0.0		0	0	0.0	0.0		
13	0	0	0	0	0	9	0	0	0	0.0	0.0		0	0	0.0	0.0		
14	Employment Status: Full-Time		89	11	0	0	0	0	9	0	0	4.9	0.3	76	0	0	4.7	0.7
15	0	0	0	0	0	9	0	0	0	0.0	0.0		0	0	0.0	0.0		
16	0	0	0	0	0	9	0	0	0	0.0	0.0		0	0	0.0	0.0		
17	0	0	0	0	0	9	0	0	0	0.0	0.0		0	0	0.0	0.0		
18	Unemployment Status:		0	0	0	0	0	9	0	0	0	0.0	0.0		0	0	4.5	0.5
19	0	0	0	0	0	9	0	0	0	0.0	0.0		0	0	5.0	0.0		
20	Do you recommend William Carey		100	0	0	0	0	0	9	0	0	5.0	0.0	72	0	0	5.0	0.1
21	0	0	0	0	0	9	0	0	0	0.0	0.0		0	0	0.0	0.0		
22	0	0	0	0	0	9	0	0	0	0.0	0.0		0	0	3.0	0.0		
23	0	0	0	0	0	9	0	0	0	0.0	0.0		0	0	0.0	0.0		
24	GPA? 3.5-4 (5)	2.-2.5 (2)	78	22	0	0	0	0	9	0	0	4.8	0.4	77	0	0	4.6	0.7
25	0	0	0	0	0	9	0	0	0	0.0	0.0		0	0	2.7	1.7		
26	Junior College	yes(1) no(2)	0	0	0	78	22	0	9	0	0	1.8	0.4	87	0	0	1.7	0.5
27	0	0	0	0	0	9	0	0	0	0.0	0.0		0	0	0.0	0.0		
28	0	0	0	0	0	9	0	0	0	0.0	0.0		0	0	0.0	0.0		
29	Instruction in courses (5)Excellent		67	33	0	0	0	0	9	0	0	4.7	0.5	42	0	0	4.8	0.5
30	100	0	0	0	0	8	1	0	0	5.0	0.0	71	0	0	4.8	0.4		
31	Accessibility of instructors		67	22	11	0	0	0	9	0	0	4.6	0.7	9	0	0	4.8	0.5
32	0	0	0	0	0	9	0	0	0	0.0	0.0		0	0	4.5	0.0		
33	Quality of career counseling		33	44	22	0	0	0	9	0	0	4.1	0.7	30	0	0	4.4	0.7
34	0	100	0	0	0	7	2	0	0	4.0	0.0	24	0	0	4.3	0.4		
35	Overall academic degree program		78	22	0	0	0	0	9	0	0	4.8	0.4	64	0	0	4.8	0.5

WILLIAM CAREY UNIVERSITY
GRADUATE FOLLOW-UP REPORT OF 2009 GRADUATES

Course: 000000000019	Year: 09	Class Enrollment: 0	School Enroll.: 0
Course Desc.: HATTIESBURG-MED	Semester:	Class Respondents: 33	School Resp.: 181
Instructor:	Inst. No.: 000		

Question	Course												School			
	5 Hi	4 %	3 %	2 %	1 Lo	Omit #	Resp #	Str %	Weak %	Mean	S.D.	%- tile	Str %	Weak %	Mean	S.D.
1	0	0	0	17	83	27	6	0	0	1.2	0.4	18	0	0	2.4	1.8
2 Active member of a church	0	0	0	19	81	6	27	0	0	1.2	0.4	41	0	0	1.3	0.5
3	0	0	50	0	50	31	2	0	0	2.0	0.0	50	0	0	2.0	0.0
4	0	50	50	0	0	31	2	0	0	3.5	0.0	69	0	0	3.0	1.2
5 Type of employer	3	35	42	0	19	2	31	0	0	3.0	1.1	78	0	0	2.6	1.1
6	100	0	0	0	0	31	2	0	0	5.0	0.0	71	0	0	4.4	1.2
7	0	0	0	0	0	33	0	0	0	0.0	0.0		0	0	0.0	0.0
8 Job preparation received	88	6	6	0	0	1	32	0	0	4.8	0.5	70	0	0	4.7	0.6
9	0	100	0	0	0	32	1	0	0	4.0	0.0	84	0	0	3.5	0.0
10 Are you: enrolled/graduate program	23	9	27	41	0	11	22	0	0	3.1	1.2	12	0	0	3.4	1.2
11	0	0	0	0	0	33	0	0	0	0.0	0.0		0	0	0.0	0.0
12	0	0	0	0	0	33	0	0	0	0.0	0.0		0	0	0.0	0.0
13	0	0	0	0	0	33	0	0	0	0.0	0.0		0	0	0.0	0.0
14 Employment Status: Full-Time 5	81	9	6	3	0	1	32	0	0	4.7	0.7	65	0	0	4.7	0.7
15	0	0	0	0	0	33	0	0	0	0.0	0.0		0	0	0.0	0.0
16	0	0	0	0	0	33	0	0	0	0.0	0.0		0	0	0.0	0.0
17	0	0	0	0	0	33	0	0	0	0.0	0.0		0	0	0.0	0.0
18 Unemployment Status:	100	0	0	0	0	31	2	0	0	5.0	0.0	93	0	0	4.5	0.5
19	100	0	0	0	0	32	1	0	0	5.0	0.0	50	0	0	5.0	0.0
20 Do you recommend William Carey	100	0	0	0	0	2	31	0	0	5.0	0.0	72	0	0	5.0	0.1
21	0	0	0	0	0	33	0	0	0	0.0	0.0		0	0	0.0	0.0
22	0	0	0	0	0	33	0	0	0	0.0	0.0		0	0	3.0	0.0
23	0	0	0	0	0	33	0	0	0	0.0	0.0		0	0	0.0	0.0
24 GPA? 3.5-4(5) 2.-2.5(2)	94	6	0	0	0	1	32	0	0	4.9	0.2	83	0	0	4.6	0.7
25	0	0	0	100	0	32	1	0	0	2.0	0.0	35	0	0	2.7	1.7
26 Junior College yes(1) no(2)	0	0	0	63	37	6	27	0	0	1.6	0.5	70	0	0	1.7	0.5
27	0	0	0	0	0	33	0	0	0	0.0	0.0		0	0	0.0	0.0
28	0	0	0	0	0	33	0	0	0	0.0	0.0		0	0	0.0	0.0
29 Instruction in courses (5)Excellent	94	6	0	0	0	1	32	0	0	4.9	0.2	74	0	0	4.8	0.5
30	75	25	0	0	0	29	4	0	0	4.8	0.4	46	0	0	4.8	0.4
31 Accessibility of instructors	94	6	0	0	0	2	31	0	0	4.9	0.2	87	0	0	4.8	0.5
32	0	0	0	0	0	33	0	0	0	0.0	0.0		0	0	4.5	0.0
33 Quality of career counseling	67	30	3	0	0	3	30	0	0	4.6	0.5	74	0	0	4.4	0.7
34	0	0	0	0	0	33	0	0	0	0.0	0.0		0	0	4.3	0.4
35 Overall academic degree program	94	0	6	0	0	1	32	0	0	4.9	0.5	78	0	0	4.8	0.5

WILLIAM CAREY UNIVERSITY
GRADUATE FOLLOW-UP REPORT OF 2009 GRADUATES

Course: 000000000038 Year: 09 Class Enrollment: 0 School Enroll.: 0
 Course Desc.: GULFPORT - MED Semester: Class Respondents: 64 School Resp.: 181
 Instructor: Inst. No.: 000

Question	Course											School				
	5 Hi	4 %	3 %	2 %	1 Lo	Omit #	Resp #	Str %	Weak %	Mean	S.D.	%- tile	Str %	Weak %	Mean	S.D.
1	0	0	0	0	0	64	0	0	0	0.0	0.0		0	0	2.4	1.8
2 Active member of a church	0	0	0	25	75	0	64	0	0	1.3	0.4	44	0	0	1.3	0.5
3	0	0	0	0	0	64	0	0	0	0.0	0.0		0	0	2.0	0.0
4	0	0	0	0	0	64	0	0	0	0.0	0.0		0	0	3.0	1.2
5 Type of employer	3	0	95	0	2	3	61	0	0	3.0	0.4	78	0	0	2.6	1.1
6	0	0	0	0	0	64	0	0	0	0.0	0.0		0	0	4.4	1.2
7	0	0	0	0	0	64	0	0	0	0.0	0.0		0	0	0.0	0.0
8 Job preparation received	81	17	2	0	0	0	64	0	0	4.8	0.4	68	0	0	4.7	0.6
9	0	0	0	0	0	64	0	0	0	0.0	0.0		0	0	3.5	0.0
10 Are you: enrolled/graduate program	13	25	0	63	0	0	64	0	0	2.9	1.2	5	0	0	3.4	1.2
11	0	0	0	0	0	64	0	0	0	0.0	0.0		0	0	0.0	0.0
12	0	0	0	0	0	64	0	0	0	0.0	0.0		0	0	0.0	0.0
13	0	0	0	0	0	64	0	0	0	0.0	0.0		0	0	0.0	0.0
14 Employment Status: Full-Time 5	98	2	0	0	0	2	62	0	0	5.0	0.1	81	0	0	4.7	0.7
15	0	0	0	0	0	64	0	0	0	0.0	0.0		0	0	0.0	0.0
16	0	0	0	0	0	64	0	0	0	0.0	0.0		0	0	0.0	0.0
17	0	0	0	0	0	64	0	0	0	0.0	0.0		0	0	0.0	0.0
18 Unemployment Status:	50	50	0	0	0	62	2	0	0	4.5	0.0	58	0	0	4.5	0.5
19	0	0	0	0	0	64	0	0	0	0.0	0.0		0	0	5.0	0.0
20 Do you recommend William Carey	100	0	0	0	0	0	64	0	0	5.0	0.0	72	0	0	5.0	0.1
21	0	0	0	0	0	64	0	0	0	0.0	0.0		0	0	0.0	0.0
22	0	0	0	0	0	64	0	0	0	0.0	0.0		0	0	3.0	0.0
23	0	0	0	0	0	64	0	0	0	0.0	0.0		0	0	0.0	0.0
24 GPA? 3.5-4(5) 2.-2.5(2)	94	6	0	0	0	0	64	0	0	4.9	0.2	83	0	0	4.6	0.7
25	0	0	0	0	0	64	0	0	0	0.0	0.0		0	0	2.7	1.7
26 Junior College yes(1) no(2)	0	0	0	88	13	0	64	0	0	1.9	0.3	93	0	0	1.7	0.5
27	0	0	0	0	0	64	0	0	0	0.0	0.0		0	0	0.0	0.0
28	0	0	0	0	0	64	0	0	0	0.0	0.0		0	0	0.0	0.0
29 Instruction in courses (5)Excellent	92	6	2	0	0	0	64	0	0	4.9	0.3	71	0	0	4.8	0.5
30	0	0	0	0	0	64	0	0	0	0.0	0.0		0	0	4.8	0.4
31 Accessibility of instructors	83	14	3	0	0	0	64	0	0	4.8	0.5	59	0	0	4.8	0.5
32	0	0	0	0	0	64	0	0	0	0.0	0.0		0	0	4.5	0.0
33 Quality of career counseling	73	27	0	0	0	9	55	0	0	4.7	0.4	80	0	0	4.4	0.7
34	0	0	0	0	0	64	0	0	0	0.0	0.0		0	0	4.3	0.4
35 Overall academic degree program	88	13	0	0	0	0	64	0	0	4.9	0.3	78	0	0	4.8	0.5